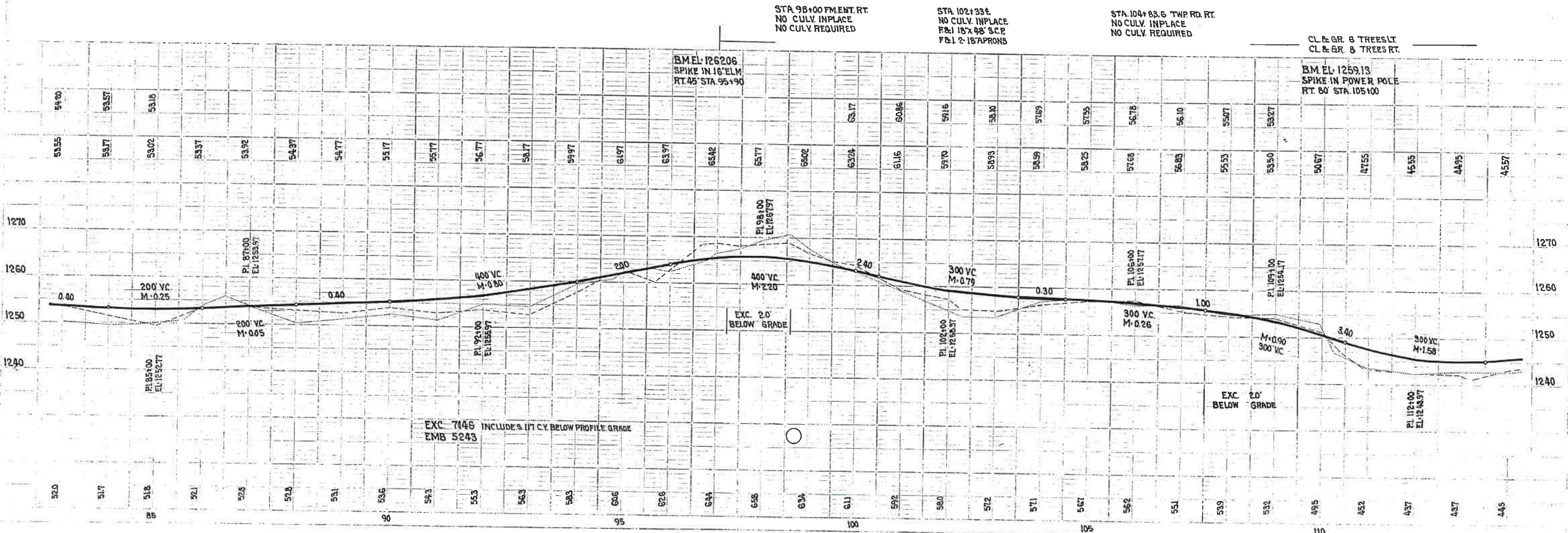


6" HDPE

All 45' off centerline
CULTIVATED



CL & GR 8 TREES LT.
CL & GR 8 TREES RT.

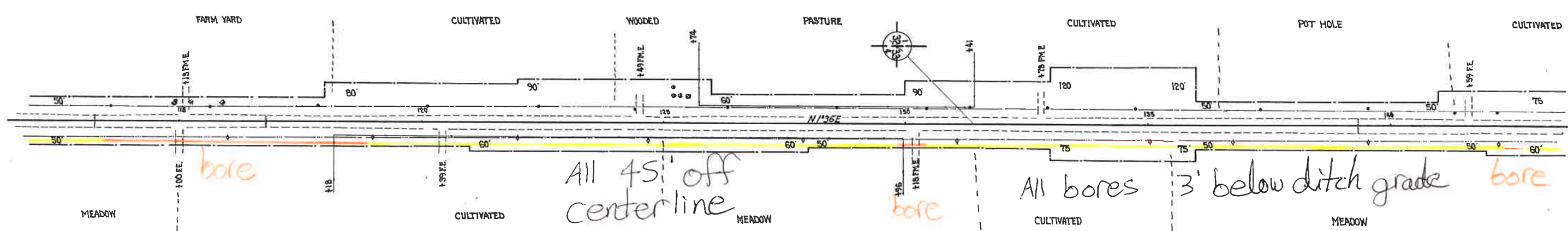
BM EL 1259.13
SPIKE IN POWER POLE
RT 80' STA 105+00

EXC. 7146 INCLUDES 117 CY. BELOW PROFILE GRADE
EMB 5243

EXC. 2.0' BELOW GRADE

CSAH 15

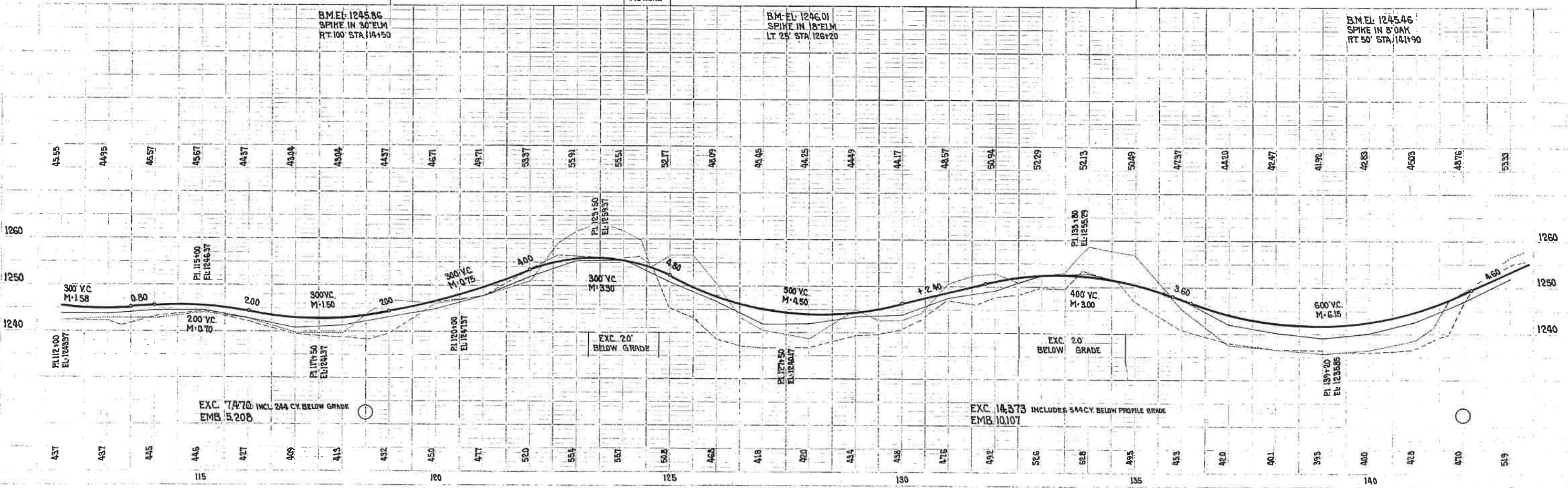
STA 113+25 L INP 48"x34" CONC REMOVE F&I 42"x30" S.C.P F&I 2-42" APRONS
 STA 115+13 PM ENT LT NO CULV. INPLACE NO CULV. REQUIRED
 STA 116+82 L INP 15"x32" C.M.C REMOVE F&I 24"x34" S.C.P F&I 2-24" APRONS
 STA 124+49 FM ENT LT INP 15"x16" C.M.C REMOVE F&I 15"x28" C.M.C F&I 2-15" APRONS
 STA 132+78 FM E LT NO CULV. INPLACE NO CULV. REQUIRED
 STA 139+35 E INP 24"x40" C.M.C REMOVE F&I 24"x54" S.C.P F&I 2-24" APRONS
 STA 141+59 FE ENT LT NO CULV. INPLACE F&I 15"x28" C.M.C F&I 2-15" APRONS



6" HDPE



STA 115+00 FE ENT RT NO CULV. INPLACE NO CULV. REQUIRED
 STA 120+89 FE ENT RT NO CULV. INPLACE F&I 15"x28" C.M.C F&I 2-15" APRONS
 STA 130+18 FM ENT RT NO CULV. INPLACE F&I 15"x28" C.M.C F&I 2-15" APRONS



CSAH 15

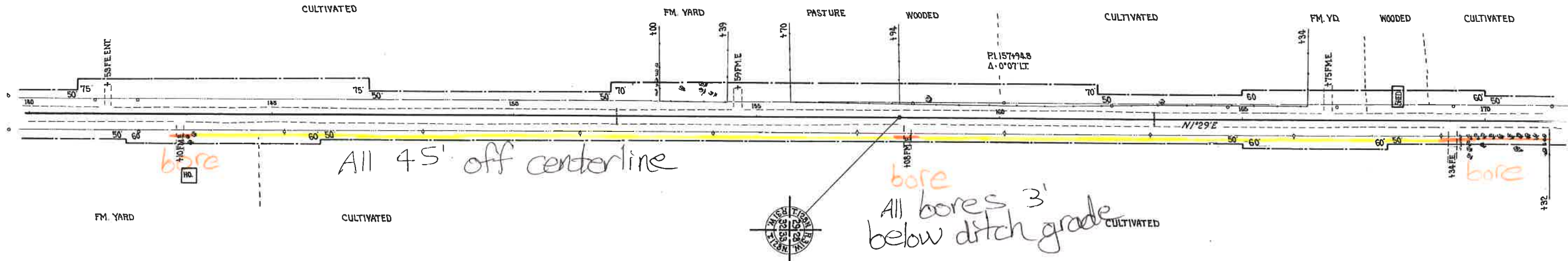
STA. 141+59 FE. ENT. LT.
NO CULV. INPLACE
F&L 15'x28'CMC.
F&L 2-18' APRONS

STA. 152+13L
INP. 18'x32'CMC REMOVE
F&L 24'x34' S.C.P.
F&L 2-24' APRONS

STA. 154+59 FM. ENT. LT.
INP. 12'x20'CMC. REMOVE
F&L 18'x28'CMC.
F&L 2-18' APRONS

STA. 163+17L
INP. 15'x36'CMC REMOVE
F&L 18'x54' S.C.P.
F&L 2-18' APRONS

STA. 166+75 FM. ENT. LT.
INP. 12'x24'CMC. REMOVE
F&L 15'x28'CMC REMOVE
F&L 2-15' APRONS



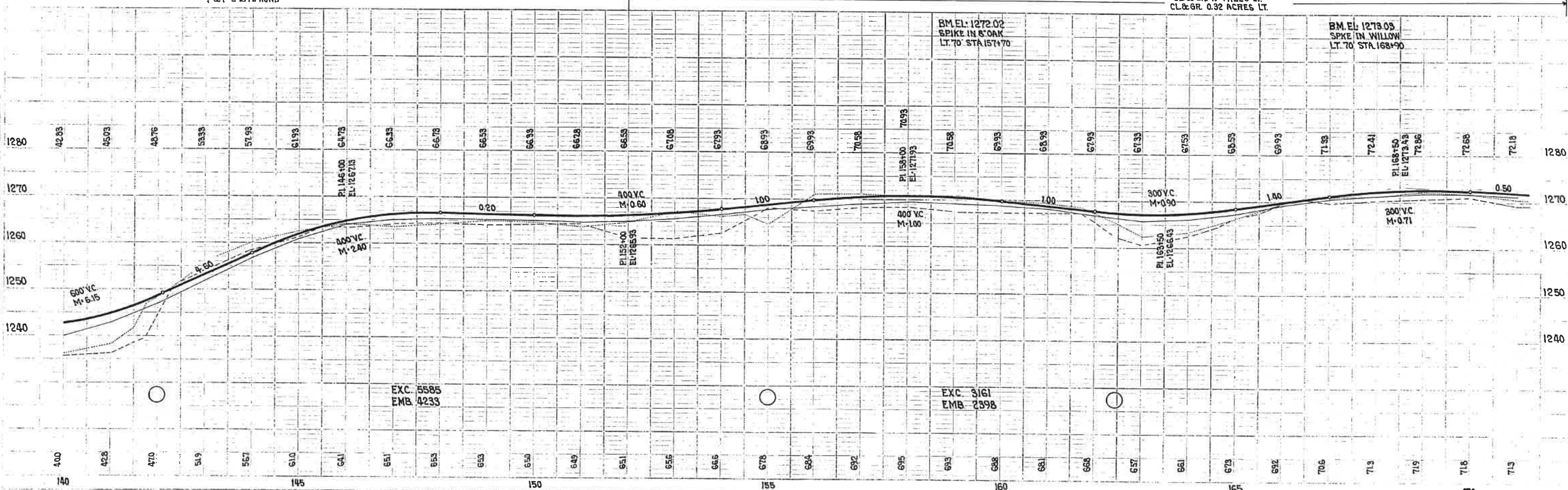
STA. 143+10 FM. ENT. RT.
INP. 15'x20'CMC REMOVE
F&L 18'x28'CMC
F&L 2-18' APRONS

6" HDPE pipe

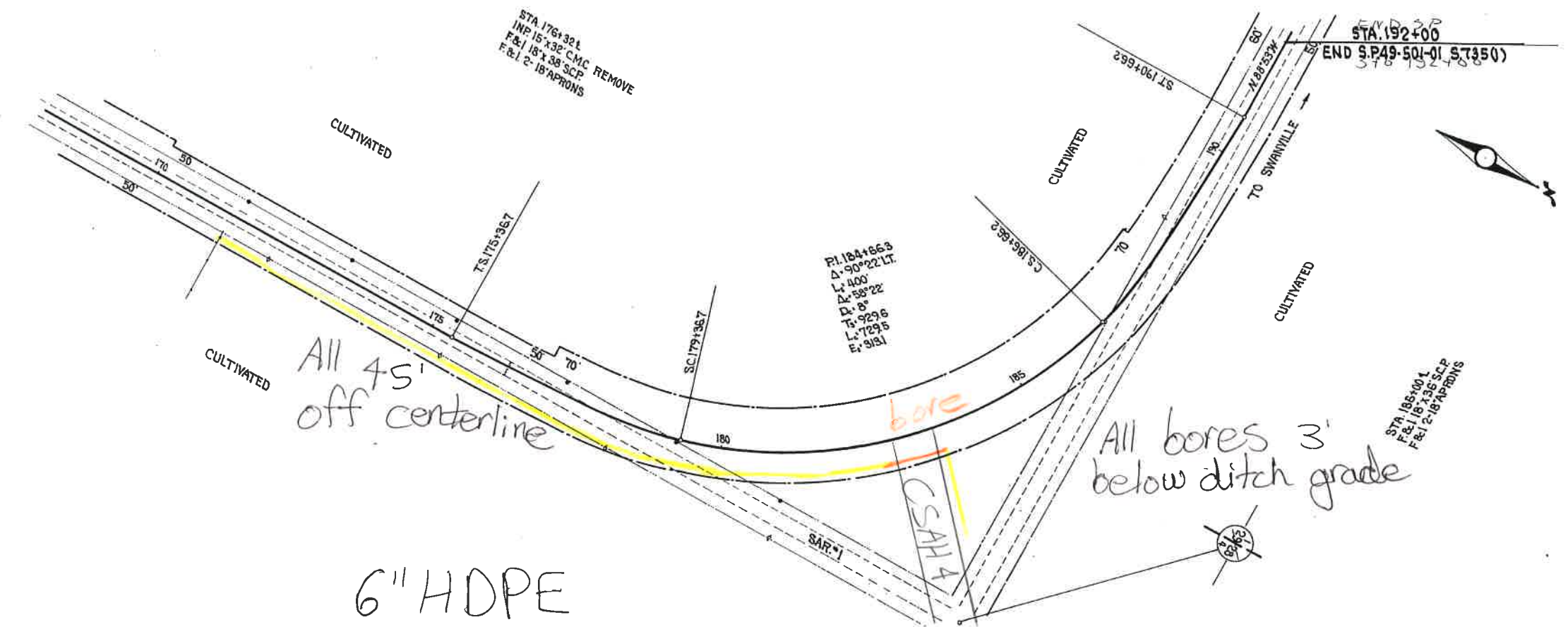
STA. 158+08 FM. ENT. RT.
NO CULV. INPLACE
NO CULV. REQUIRED

CL & GR. 11 TREES LT.
CL & GR. 0.32 ACRES LT.

STA. 171+34 FE. ENT. RT.
NO CULV. INPLACE
NO CULV. REQUIRED



CSAH 15



6" HDPE

