

ENGINEERS ARCHITECTS LAND SURVEYORS PROJECT MANAGERS  
ALEXANDRIA BRANDED CHECKSTON  
515-785-8149 218-889-3117 218-881-6552

WIDSETH SMITH NOLTING

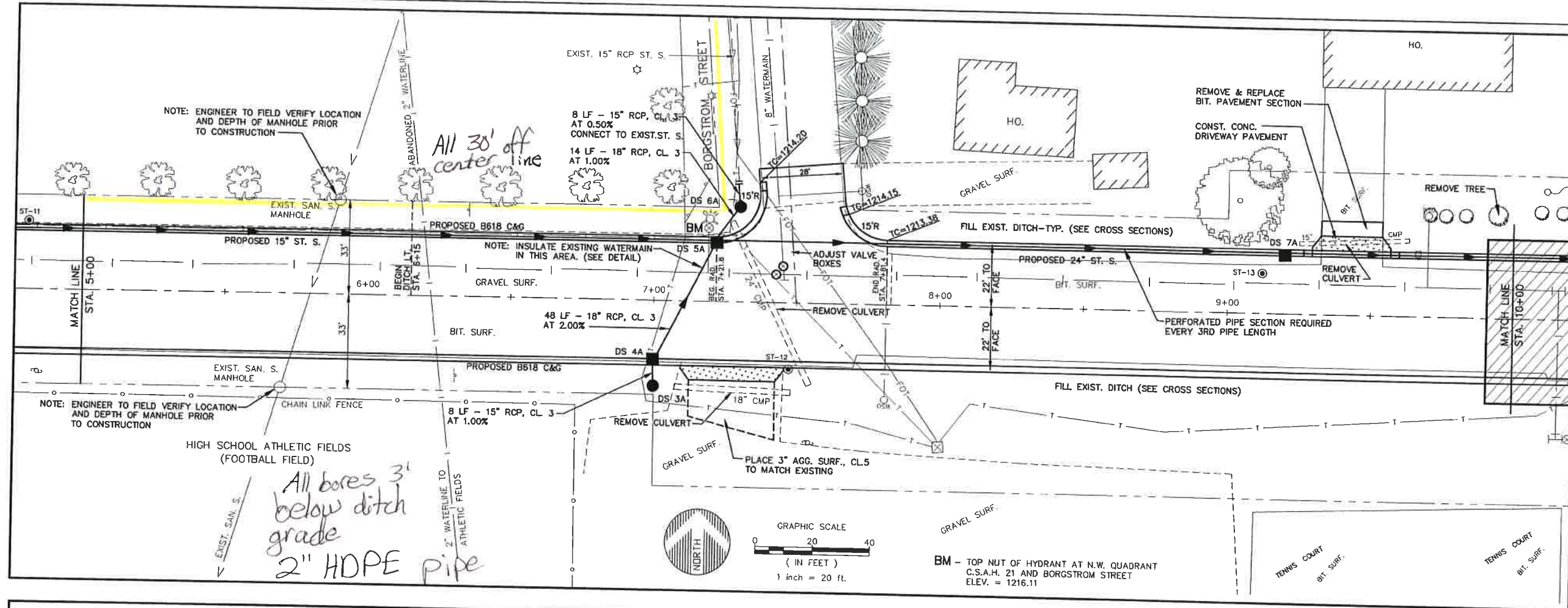
I HEREBY CERTIFY THAT THIS PLAN, SPECIFICATION OR REPORT WAS PREPARED BY ME OR UNDER MY CLOSE PERSONAL SUPERVISION AND THAT I AM A REGISTERED ENGINEER UNDER THE LAWS OF THE STATE OF MINNESOTA

DATE: \_\_\_\_\_ REG. NO. 103518

DATE	REVISIONS	DESCRIPTION	BY

DATE: 5-17-95  
SCALE: 1" = 20'  
DRAWN BY: P.K.B.  
CHECKED BY: D.J.A.  
JOB NO. 270B165

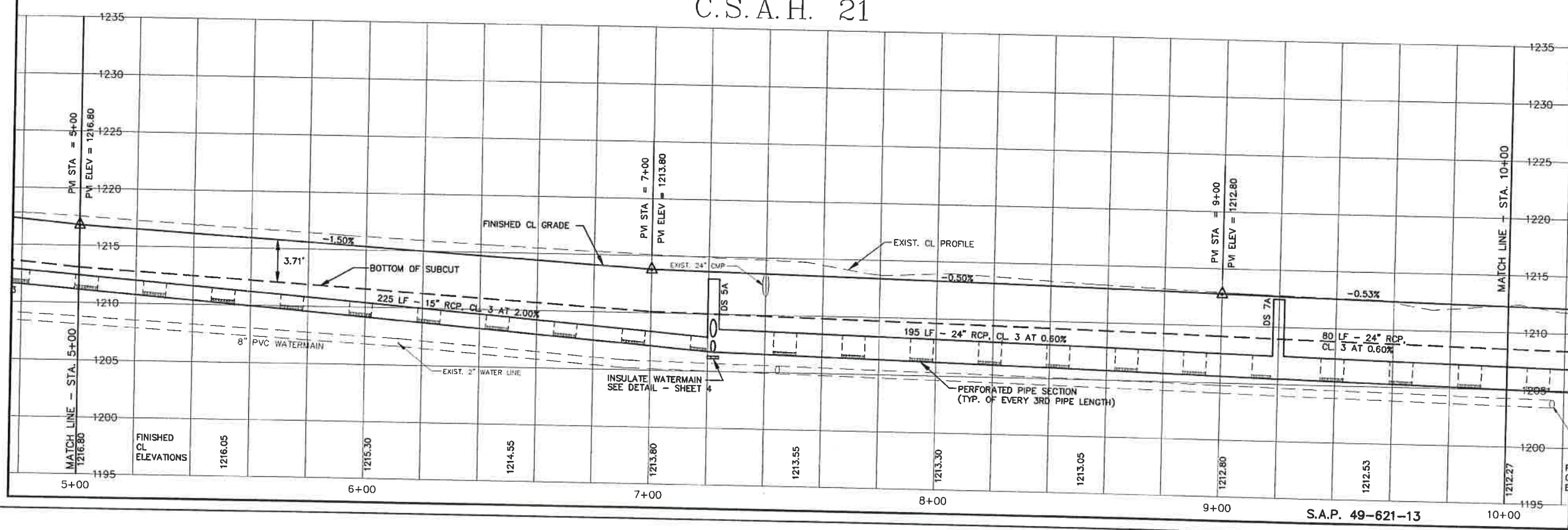
MORRISON COUNTY, MINNESOTA  
UPSALA, MINNESOTA  
C.S.A.H. 19 & 21 IMPROVEMENTS  
C.S.A.H. 21



ENGINEERS ARCHITECTS LAND SURVEYORS PROJECT MANAGERS  
 WIDSETH SMITH NOLTING  
 ALEXANDRIA, MINNESOTA  
 612-762-8149 218-867-5117 218-881-6528

I HEREBY CERTIFY THAT THIS PLAN SPECIFICATION OR REPORT WAS PREPARED BY ME OR UNDER MY DIRECT SUPERVISION AND THAT I AM A DULY LICENSED ENGINEER UNDER THE LAWS OF THE STATE OF MINNESOTA.  
 DATE: \_\_\_\_\_ REG. NO. 10518

C.S.A.H. 21



DATE	REVISIONS DESCRIPTION	BY

DATE: 5-17-95  
 SCALE: 1" = 20'  
 DRAWN BY: P.A.B.  
 CHECKED BY: D.E.A.  
 JOB NO. 27016'S

MORRISON COUNTY, MINNESOTA  
 UPSALA, MINNESOTA  
 C.S.A.H. 19 & 21 IMPROVEMENTS  
 C.S.A.H. 21