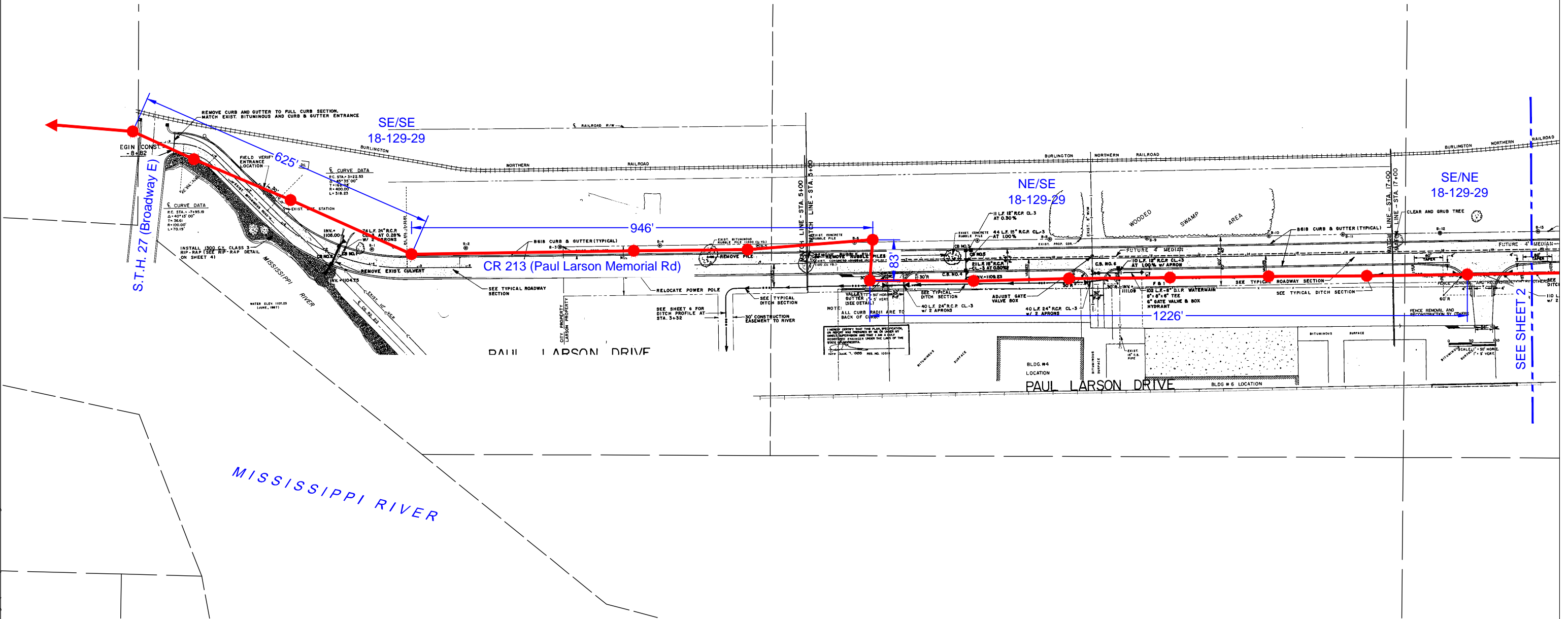


MORRISON COUNTY HWY. PERMIT REQ'D

That part of
CR 213
SE/SE, NE/SE, SE/NE 18-129-29

- NOTE:
1. INSTALL FIBER OPTIC CABLE ON EXISTING POLES
2. FIBER OPTIC CABLE TO BE INSTALLED AT SAME POINT AS NEUTRAL



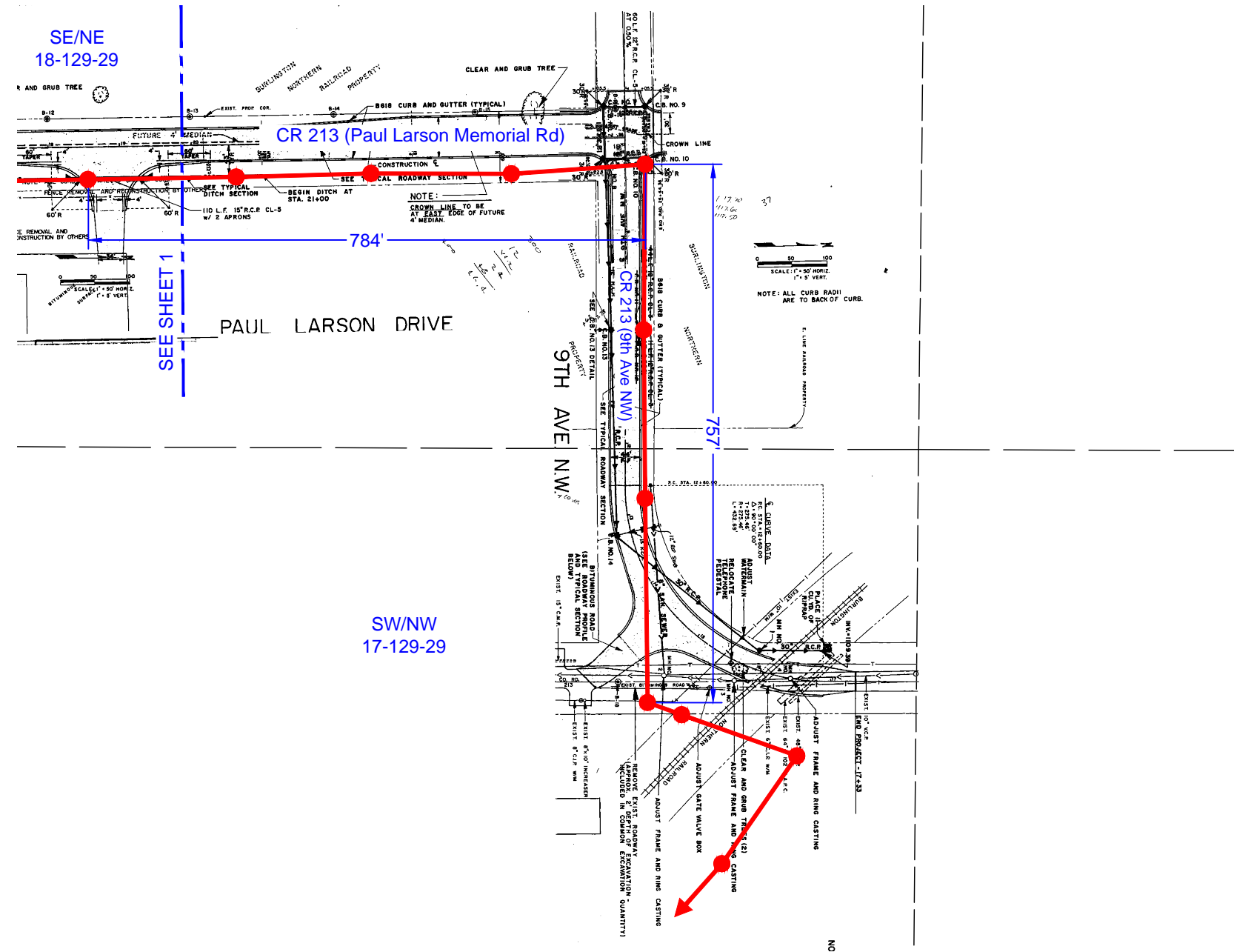
P:\files2\ded_save\cd-dwgs\cd14\CD-14-14.dwg

TYPE OF CONSTRUCTION OVERHEAD		DRAWN BY: MCC	APP: .	MINNESOTA POWER DULUTH, MINNESOTA 218-722-2641	CD-14-14
		DATE: 4-29-14	ENG: .		
START: .	COMP: .	SCALE: 1" = 200'	W/O: 1835621	SHEET: 1 OF 2	
				REVISED: .	

MORRISON COUNTY HWY. PERMIT REQ'D

That part of
CR 213
SE/NE 18-129-29 &
SW/NW 17-129-29

- NOTE:
1. INSTALL FIBER OPTIC CABLE ON EXISTING POLES
2. FIBER OPTIC CABLE TO BE INSTALLED AT SAME
POINT AS NEUTRAL



\\P:\files2\ded_save\cd-dwgs\cd14\CD-14-14.dwg

TYPE OF CONSTRUCTION OVERHEAD		DRAWN BY: MCC	APP: .	MINNESOTA POWER DULUTH, MINNESOTA 218-722-2641	CD-14-14
		DATE: 4-29-14	ENG: .		
START: .	COMP: .	SCALE: 1" = 200'	W/O: 1835621		SHEET: 2 OF 2
					REVISED: .