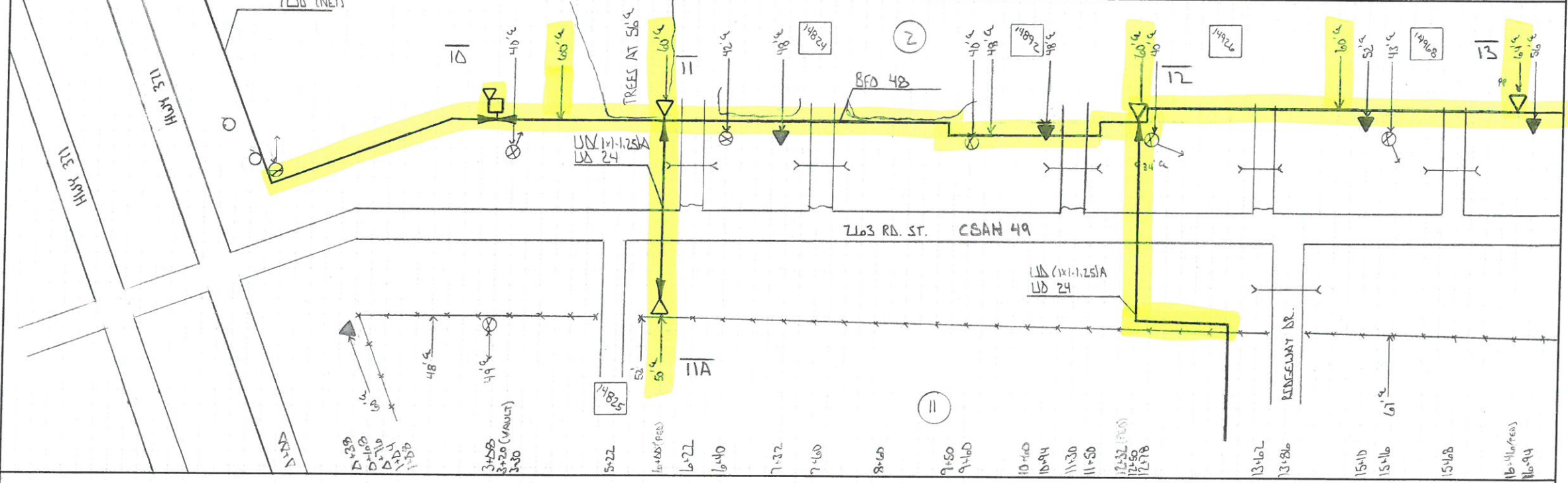


RIGHT OF WAY CHANGE AT 950'
FROM 60' TO 50' FOR 200' THEN
BACK TO 60' FOR 100' THEN 70'



DISTANCE FROM ♀ ROAD				TWP	42 N	ROUTE: C
SEE NOTATION				RNG	32 W	
STAKED BY:	JPS	DATE:	3-25-15	PROJECT:	MN537-2015 HWY 371	
REV.		REV.		EXCHANGE:	Brainerd	SERVICE AREA: FTR1
AS BUILT BY:		DATE:		TOWNSHIP:	Ripley	
				CO.	Morrison	



HOUSING NO.	BA	BDO		BFO		BH	BM	HBF		HO	NID	SUB NO.	SE	UD	UO
	3	3 (AG)	4 (AGS)	(48)	(72)D NET	F(30x48)x36)T	2 (58)(8)	53 A	0 (72)M	0 (48)M	1			(1x1.25)A	24
C 10	1	1		2426	2416	1	1	1	1	1					
C 11	1		1					410							
C 12	1		1					724						128	178
C 13	1		1					482							
	5	1	4	2426	2416	1	5	5	1	1				128	178

RIGHT OF WAY CHANGE FROM 70' TO 50' AT ABOUT 312 STAYS AT 50' FOR 500' THEN BACK TO 60'

(Z)



DISTANCE FROM ♀ ROAD

SEE NOTATION



TWP 42 N
RNG 32 W
SEC. 7
11
CO. Morrison

ROUTE: C
SHEET: 14 OF 14
SERVICE AREA: FTR 1

STAKED BY: JPS DATE: 3-25-15

PROJECT: MN537-2015 HWY 371

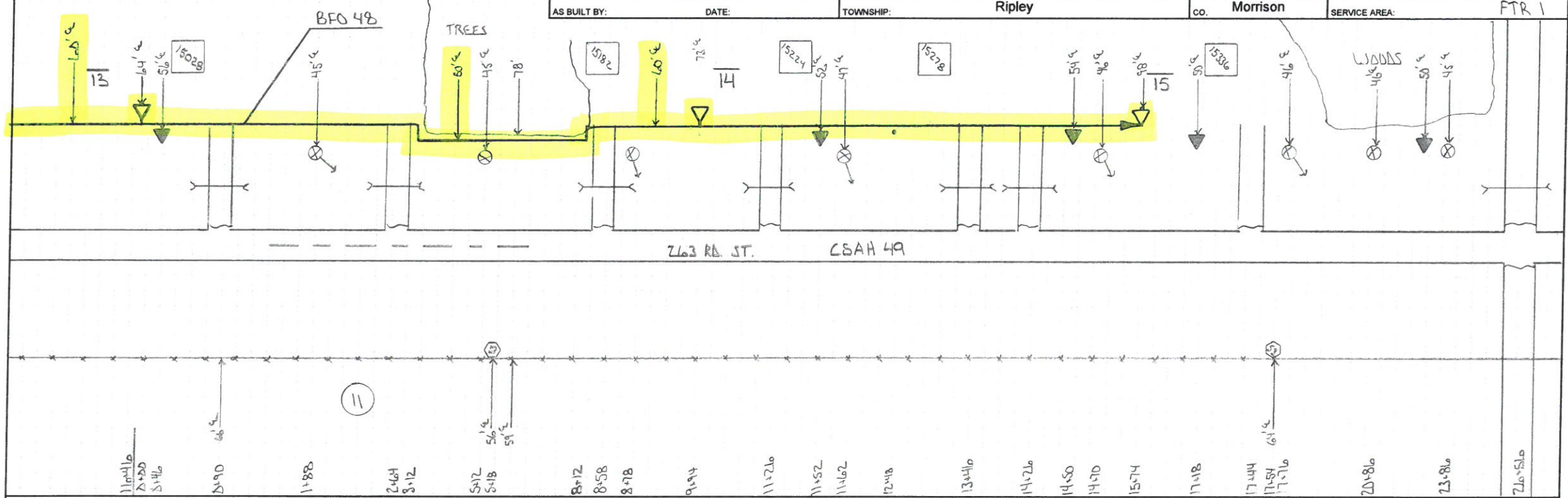
REV. DATE:

EXCHANGE: Brainerd

AS BUILT BY:

DATE:

TOWNSHIP: Ripley



HOUSING NO.	BA	BDO	BFO	BH	BM	HBF	HO	NID	SUB NO.	SE	UD	UO
		3	4 (AGS)	48		2 (5/2)(8) 53 A		1				
E/14	1	1	1082		1							
C/15	1	1	648		1							
	2	2	1730		2							