


COVERSHEET

	RUS Code: 326	W/O #: 294973
	EXT 740 C:	WP #:
	Loan Nbr: BA8	LOC #:
	Loan Ywr: 2014	Name: SUBSTATION-LITTLE FALLS
	AFF #:	(H) Phone #:
17330 MN-371 Brainerd, MN 56401 (218) - 829 - 2827	Elec:	(W) Phone #:
	RFCd:	(C) Phone #:
	By:	Acct #:

City:	Staked By: LUKE M KASELLA
Sec: 27	Date: 2/9/2016 12:00:00AM
Twp:	Signed By:
Rg: 31	Date:

Tailgate Session	
Job Steps:	Work Procedures:
PPE Needed:	Job Hazards:
Source Control Verified/Size:	Equipment Needed:
Personal Tools:	1-Shot/K-Fuse Size:
Crew:	Date:
Comments:	

Gopher State	
Locate #:	Date OK:

Comments 1:
Comments 2:
Comments 3:

Septic:	Row 1: (1)COLOMBE 78-22-81 (2)YOUNG 78-26-91	Rd Permit: <input checked="" type="checkbox"/>
Priv Elec:	Row 2: (3)BRISK 79-12-58 (4)THEILEN 78-36-129	Cty Permit:
LP Line:	Line Ext \$ Bore/Push \$ Permit \$ Ped/Loop \$ Total \$	TWP Permit:
Sprinkler:	Backfill Comments:	State Permit:
Final Grade:		DNR Permit:
Brushing: <input checked="" type="checkbox"/>		Joint Trench:
Trees: <input checked="" type="checkbox"/>		Notify TWP: <input checked="" type="checkbox"/>

Reel ID:	Start Ftg:	End Ftg:
Reel ID:	Start Ftg:	End Ftg:
Reel ID:	Start Ftg:	End Ftg:

CONDUCTOR SUMMARY			
STATUS	CONDUCTOR	TYPE	QTY (FT)
	1/0 25KV	PRIMARY	258
	1/0 25KV SOL	PRIMARY	3730
	4 ACSR	PRIMARY	2366
INSTALL	1/0 ACSR	PRIMARY	35788
INSTALL	4 ACSR	PRIMARY	192
	1/0 25KV	PRIMARY	242
	1/0 25KV SOL	PRIMARY	3728
	1/0 ACSR	PRIMARY	2412
	4 ACSR	PRIMARY	2438
RETIRE	1/0 25KV	PRIMARY	2410
RETIRE	1/0 ACSR	PRIMARY	1760
RETIRE	4 ACSR	PRIMARY	12532
	UG-MODEL	SECONDARY	410
INSTALL	4/0 USE	SECONDARY	10
	Sec-OH	SECONDARY	184
	Sec-UG	SECONDARY	45



Staked By: LUKE M KASELLA	RUS Code: 326	W/O #: 294973
Date: 2/9/2016 12:00:00AM	EXT 740 C:	LOC #:
Signed By:	Loan Nbr: BA8	Name: SUBSTATION-LITTLE FALLS
Date:	Loan Ywr: 2014	Acct #:
Warehouse:		

JOB STATS SUMMARY

	PRIM	SECD	SERV	TRAN	CONS	SL	MET	TRA	POLES
INSTALLATION OH:	9043	-	-	-	-	-	-	2	34
INSTALLATION UG:	-	10	-	-	-	-	-		
RETIREMENT OH:	7146	-	-	-	-	-	-	2	27
RETIREMENT UG:	2410	-	-	-	-	-	-		

ASSEMBLY UNIT SUMMARY

ASSEMBLY NAME	DESCRIPTION	INSTALLED	RETIRED
1/0 25KV	1/0 25KV SOLID JACKET CABLE	-	2410
1/0 ACSR	1/0 ACSR	35788	1760
35-5	35-5 POLE	2	18
4 ACSR	4 ACSR	192	12532
4/0 USE	4/0 600V USE	10	-
40-5	40-5 POLE	28	9
45-4	45-4 POLE	3	-
50-3	50-3 POLE	1	-
A1.1	(OLD A1) SINGLE PRIMARY SUPPORT, SINGLE	1	13
A2.1	(OLD A1-1)DOUBLE PRIMARY SUPPORT, SINGLE	-	6
A2.3	(OLD A2)DOUBLE PRIMARY SUPPORT, SINGLE P	-	5
A5.1	(OLD A5)PRIMARY SINGLE PHASE DEAD END	-	6
A5.21	(OLD A7)SINGLE PHASE DEAD END (X-ARM CON	1	-
A5.3	(OLD A5-2)PRISINGLE PHASE TAP (EXTENDED)	2	-
A6.1	(OLD A6)DOUBLE DEADEND (STRAIGHT)	1	-
A6.2	DOUBLE DEADEND (FEED THROUGH)	-	1
C1.11	(OLD C1)SINGLE SUPPORT ON X ARM TANGENT	22	-
C2.21	(OLD C2)DOUBLE SUPPORT ON X ARMS	3	-
C2.24	(OLD C1-1)DOUBLE SUPPORT ON X ARMS TANGE	3	-
C4.1G	(OLD C4-1)DEADEND ANGLE GUIDE (90-150)	1	-
C5.1	(OLD C5-1)SINGLE DEADENDS	1	-
C5.71L	(OLD C7A)SINGLE DEADEND ON HUGHES ARM	3	-
E1.1	(OLD E1-2)SINGLE DOWN GUY	10	12
E1.1L	SINGLE DOWN GUY HEAVY DUTY	1	-
E1.5	GUY STRAIN INSULATOR	6	1
E3.1LG	THREE DOWN GUY GUIDE HD THROUGH BOLT TYP	5	-
E3-10	GUY GUARD	25	-
F1.12	(OLD F1-4)W/P SCREW ANCHOR	-	3
F2.10	(OLD F1-3S) 12" POWER DRIVE 3/4"	16	2
F2.8	(OLD F1-2S)POWER DRIVE 5/8"	8	6
F6.6	(OLD F6-1) TRIPLE HELIX ANCHOR	1	-
G10-10	SINGLE PHASE TRANSFORMER ON DEAD END POL	-	1
G10-15	SINGLE PHASE TRANSFORMER ON DEAD END POL	1	-
G9-3	SINGLE PHASE TRANSFORMER ON TANGENT POLE	1	1
H1.1	(OLD M2-11)GROUNDING ASSY GROUND ROD TYP	33	11
L1.5	PRIMARY DEADEND TYING ASSY	2	2
L2.5	NEUTRAL DEADEND TYING ASSY	2	2
M2-9	GROUND FOR POLE TOP PROTECTION	-	1
R1.1	(OLD M3-10)OCR (OIL CIRCUIT RECLOSER)	-	2
R3.2	(OLD M3-25A)3 OCR"S BY-PASS SWITCHES CL	1	-
S1.01	(OLD M5-9) CUTOUT 15KV LB	5	-
S1.1	(OLD M3-4)CUTOUT SINGLE PHASE	1	3
UA1	SINGLE PHASE CABLE TERMINAL POLE	-	4
UA2	single phase cable dead term pole	2	-
UM27-2	SACRIFICIAL ANODE-EQUIPMENT GROUND PROTE	-	1
UM3-14	SECTIONALIZING ENCLOSURE, SINGLE PHASE	-	1
UM5	SECONDARY CABLE TERMINAL POLE RISER	1	-



Staked By:	LUKE M KASELLA	RUS Code:	326	W/O #:	294973
Date:	2/9/2016 12:00:00AM	EXT 740 C:		LOC #:	
Signed By:		Loan Nbr:	BA8	Name:	SUBSTATION-LITTLE FALLS
Date:		Loan Ywr:	2014	Acct #:	
Warehouse:					

UM6-1	LOADBREAK ELBOW (200A)	-	2
UM6-10-15	15KV INSULATED PROTECTIVE CAP (200A)	-	1
UM6-22-15	MODULE 15KV-04	-	1

MAJOR MATERIAL ITEM SUMMARY

Description	MAT ITEM ID	INST QTY	Installed	Returned	RET QTY	Salvaged
ANODE, SACRIFICIAL 5#	11002	-			2	
CLAMP, BONDING	117002	26			12	
CLAMP, DEAD END	117004	46			20	
CLAMP, 3 BOLT GUY	117012	52			24	
CLEVIS, SQUARE	123002	3			5	
SHACKLE, ANCHOR	123006	10			-	
WIRE, 1/0 ACSR	150002	35788			1760	
WIRE, 4 ACSR	150006	192			12532	
ARRESTER, LIGHTNING (LINE)	15202	5			6	
CLAMP, CONNECTOR	170002	157			77	
CLAMP, GROUND ROD	170004	33			12	
CLAMP, HOT LINE	170006	6			10	
ARM, CROSS 8"	182002	39			-	
CUTOUT, SINGLE SHOT LB 15KV	183004	8			7	
GUY ATTACHMENT	21002	26			12	
GROUND SLEEVE 10	222202	-			1	
GUY GUARD	293002	25			-	
INS. POLE TOP 7.2KV	342004	103			36	
INS. SPOOL	342010	29			24	
INS. SUSP 7.2KV	342012	29			8	
MARKER, CABLE ROUTE	393002	-			1	
NUT, EYE	429002	12			2	
NUT, LOCK	429004	252			117	
PEDS, 25KV SECT. 10PRI	444008	-			1	
PIN, X ARM 7.2KV	450002	68			-	
PIN, P.T. 7.2KV	450004	35			36	
POLE 35"	480004	2			18	
POLE 40"	480006	28			9	
POLE 45"	480008	3			-	
POLE 50" - OVER	480010	1			-	
ROD, POWER DRIVE	530004	24			8	
rod, swamp anchor	530005	2			-	
ROD, ARMOUR	530006	21			20	
ROD, GROUND	530008	33			12	
SCREWS, LAG	555002	66			24	
U GUARD	576002	75			100	
GRIPS, KELLEMS 25KV	630004	4			8	
BOLT, CARRIAGE	63002	72			-	
BOLT, DOUBLE ARMING	63004	24			-	
BOLT, EYE	63006	25			14	
BOLT, MACHINE 1/2"	63007	6			-	
BOLT, MACHINE 5/8"	63008	162			119	
BOLT, MACHINE 3/4"	63009	1			-	
BOLT, UPSET	63012	26			19	
SWITCH, OCR BYPASS	650008	3			-	
HEAT SHRINK, SMALL	667704	2			6	
PROTECTIVE CAP 15KV	669002	-			1	
TERMINATOR AER 25KV 1/0 & 4/0	669104	2			4	
ELBOW, 25 CABLE 15 BUSHING	669308	-			2	
MODULE, 15KV-04	669412	-			1	



Staked By: LUKE M KASELLA	RUS Code: 326	W/O #: 294973
Date: 2/9/2016 12:00:00AM	EXT 740 C:	LOC #:
Signed By:	Loan Nbr: BA8	Name: SUBSTATION-LITTLE FALLS
Date:	Loan Ywr: 2014	Acct #:
Warehouse:		

WRAPLOCK TIES	679002	93		33
1 1/2 & 3 KVA OH TRANSFORMER	693003	1		1
10 KVA OH TRANSFORMER	693010	-		1
15 KVA OH TRANSFORMER	693015	1		-
WASHERS, SQUARE	710002	448		160
WASHERS, ROUND	710004	4		-
WIRE, 4 STRANDED BARE CU	720004	76		84
WIRE, 4-6 GROUND	720006	1372		516
WIRE, AL TIE 4-6-7	720008	288		162
WIRE, 3/8" GUY	730004	1035		420
BRACE, X ARM 28"	75002	72		-
BRACE, X ARM 60"	75004	6		-
BRACKET, CUTOUT (UPPER)	78012	3		11
OCR BRACKET W/OCR	78060	3		2
CABLE, USE 600V 4/0	90004	10		-
ANCHOR,WP SCREW	9004	-		3
ANCHOR, POWER DRIVE	9006	24		8
ANCHOR, SWAMP	9010	1		-
CABLE, 25KV 1/0 SOLID (JACKET)	91014	-		2410

PAGE 1

INSTALL ALL TAPS TO END OF NEW
3 PHASE ON CENTER (A) PHASE

- | | |
|---|------------------|
| 2 | New 408 1/0 ACSR |
| | New 1 145-4 |
| | New 1 C4.1G |
| | New 2 E3.1LG |
| | New 6 E3-10 |
| | New 4 F2.10 |
| | New 1 F6.6 |
| | New 1 H1.1 |

PHASING

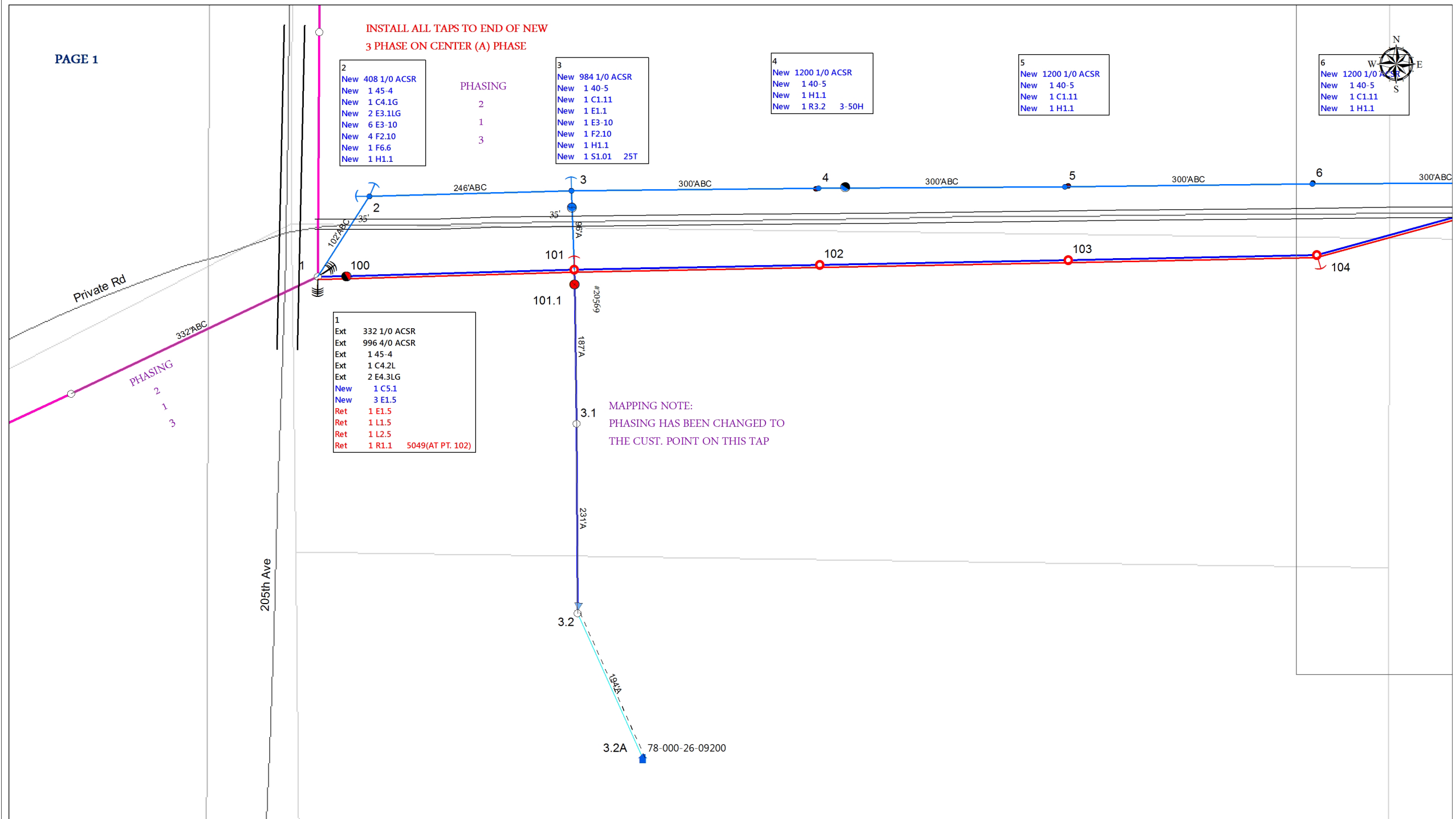
- 2
- 1
- 3

- | | |
|---|------------------|
| 3 | New 984 1/0 ACSR |
| | New 1 140-5 |
| | New 1 C1.11 |
| | New 1 E1.1 |
| | New 1 E3-10 |
| | New 1 F2.10 |
| | New 1 H1.1 |
| | New 1 S1.01 25T |

- | | |
|---|-------------------|
| 4 | New 1200 1/0 ACSR |
| | New 1 140-5 |
| | New 1 H1.1 |
| | New 1 R3.2 3-50H |

- | | |
|---|-------------------|
| 5 | New 1200 1/0 ACSR |
| | New 1 140-5 |
| | New 1 C1.11 |
| | New 1 H1.1 |

- | | |
|---|-------------------|
| 6 | New 1200 1/0 ACSR |
| | New 1 140-5 |
| | New 1 C1.11 |
| | New 1 H1.1 |



- | | |
|---|-----------------------------|
| 1 | Ext 332 1/0 ACSR |
| | Ext 996 4/0 ACSR |
| | Ext 1 145-4 |
| | Ext 1 C4.2L |
| | Ext 2 E4.3LG |
| | New 1 C5.1 |
| | New 3 E1.5 |
| | Ret 1 E1.5 |
| | Ret 1 L1.5 |
| | Ret 1 L2.5 |
| | Ret 1 R1.1 5049(AT PT. 102) |

MAPPING NOTE:
PHASING HAS BEEN CHANGED TO
THE CUST. POINT ON THIS TAP



MAPPING NOTE:
PHASING HAS BEEN CHANGED TO
THE CUST. POINT ON THIS TAP

- 6
- New 1200 1/0 ACSR
- New 140-5
- New 1 C1.11
- New 1 H1.1

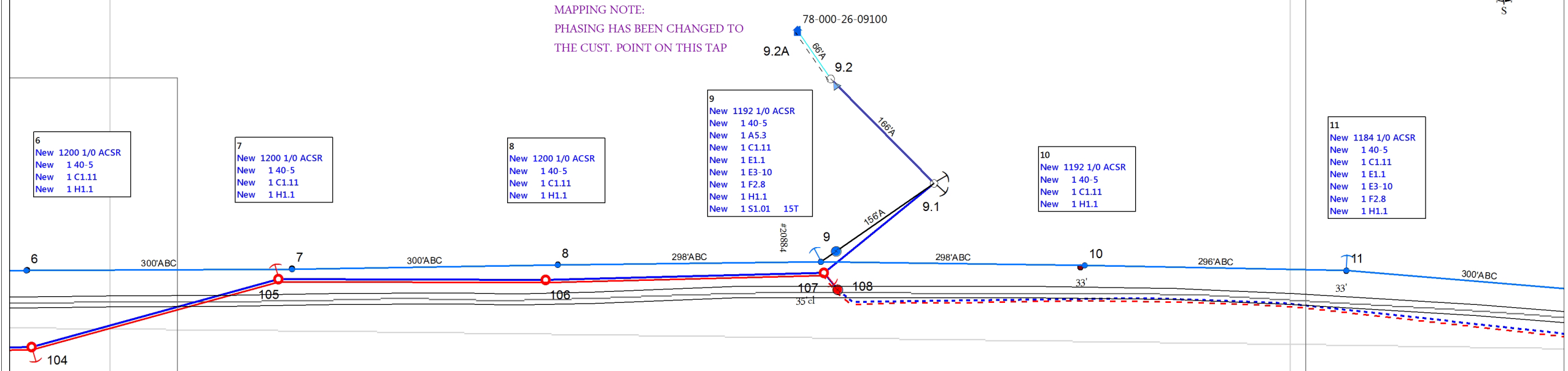
- 7
- New 1200 1/0 ACSR
- New 140-5
- New 1 C1.11
- New 1 H1.1

- 8
- New 1200 1/0 ACSR
- New 140-5
- New 1 C1.11
- New 1 H1.1

- 9
- New 1192 1/0 ACSR
- New 140-5
- New 1 A5.3
- New 1 C1.11
- New 1 E1.1
- New 1 E3-10
- New 1 F2.8
- New 1 H1.1
- New 1 S1.01 15T

- 10
- New 1192 1/0 ACSR
- New 140-5
- New 1 C1.11
- New 1 H1.1

- 11
- New 1184 1/0 ACSR
- New 140-5
- New 1 C1.11
- New 1 E1.1
- New 1 E3-10
- New 1 F2.8
- New 1 H1.1





- 11
- New 1184 1/0 ACSR
- New 1 40-5
- New 1 C1.11
- New 1 E1.1
- New 1 E3-10
- New 1 F2.8
- New 1 H1.1

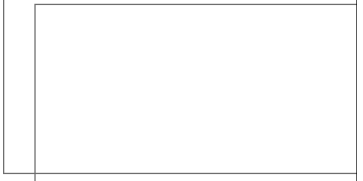
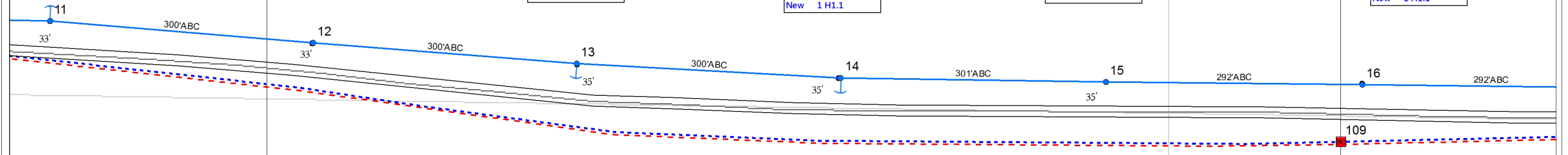
- 12
- New 1200 1/0 ACSR
- New 1 40-5
- New 1 C1.11
- New 1 H1.1

- 13
- New 1200 1/0 ACSR
- New 1 40-5
- New 1 C1.11
- New 1 E1.1
- New 1 E3-10
- New 1 F2.8
- New 1 H1.1

- 14
- New 1200 1/0 ACSR
- New 1 40-5
- New 1 C1.11
- New 1 E1.1
- New 1 E3-10
- New 1 F2.8
- New 1 H1.1

- 15
- New 1204 1/0 ACSR
- New 1 40-5
- New 1 C1.11
- New 1 H1.1

- 16
- New 1168 1/0 ACSR
- New 1 40-5
- New 1 C1.11
- New 1 H1.1





78-000-26-08900

Jewel Rd

MAPPING NOTE:
THIS SERVICE HAS BEEN RETIRED
AND IS NO LONGER IN THE FIELD

MAPPING NOTE:
PHASING HAS BEEN CHANGED TO THE
FIRST EXISTING POLE ON THIS TAP
CHANGING TO 'A' PHASE

- 16
- New 1168 1/0 ACSR
- New 1 140-5
- New 1 C1.11
- New 1 H1.1

- 17
- New 1168 1/0 ACSR
- New 1 140-5
- New 1 C1.11
- New 1 H1.1

- 18
- New 1168 1/0 ACSR
- New 1 140-5
- New 1 C1.11
- New 1 H1.1

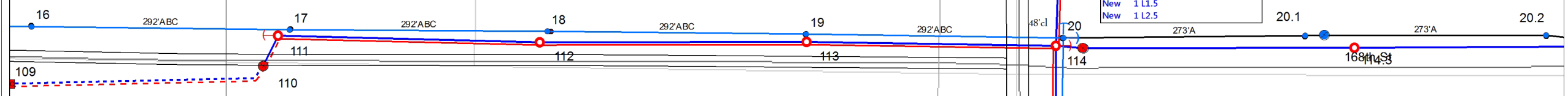
- 19
- New 1168 1/0 ACSR
- New 1 140-5
- New 1 C2.24
- New 1 H1.1

PHASING
2
1
3

- 20
- USE C6.91G FRAMING GUIDE
- New 1168 1/0 ACSR
- New 1 45-4
- New 2 C5.71L FIBERGLASS ARMS
- New 1 E1.5
- New 2 E3.1LG
- New 6 E3-10
- New 6 F2.10
- New 1 H1.1
- New 1 L1.5
- New 1 L2.5

- 20.1
- New 1 140-5
- New 1 A6.1
- New 1 H1.1
- New 1 S1.1 15T

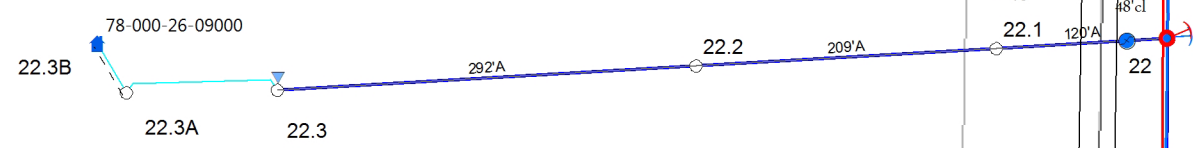
- 20.2
- New 1 35-5
- New 1 A1.1



PHASING
3 1 2

- 21
- New 1200 1/0 ACSR
- New 1 140-5 SET 7' DEEP
- New 1 C2.24
- New 1 H1.1

PAGE 5



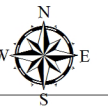
MAPPING NOTE:
PHASING HAS BEEN CHANGED TO
THE CUST. POINT ON THIS TAP

21
New 1200 1/0 ACSR
New 1 40-5 SET 7' DEEP
New 1 C2.24
New 1 H1.1

22
New 1204 1/0 ACSR
New 1 40-5
New 1 A5.21
New 1 C1.11
New 1 E1.1
New 1 E1.5
New 1 E3-10
New 1 F2.10
New 1 H1.1
New 1 S1.01 15T
Ret 522 4 ACSR
Ret 1 40-5
Ret 1 A1.1
Ret 1 A5.1
Ret 1 E1.1
Ret 1 F1.12
Ret 1 H1.1

23
New 1172 1/0 ACSR
New 1 40-5
New 1 C1.11
New 1 H1.1

24
New 1172 1/0 ACSR
New 1 40-5 SET 6 1/2' DEEP
New 1 C1.11
New 1 H1.1

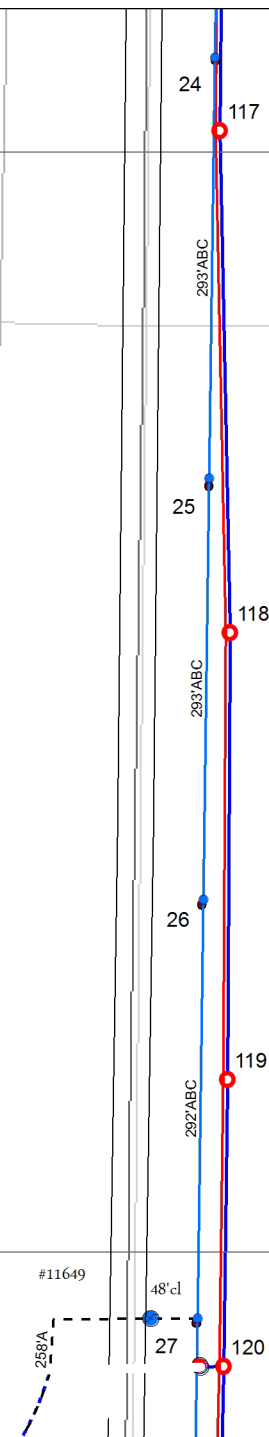


24
 New 1172 1/0 ACSR
 New 1 40-5 SET 6 1/2' DEEP
 New 1 C1.11
 New 1 H1.1

25
 New 1172 1/0 ACSR
 New 1 40-5
 New 1 C1.11
 New 1 H1.1

26
 New 1172 1/0 ACSR
 New 1 35-5
 New 1 C1.11
 New 1 H1.1

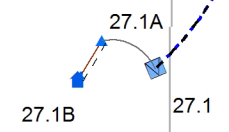
27
 New 1168 1/0 ACSR
 New 1 40-5
 New 1 C1.11
 New 1 H1.1
 New 1 UA2 8T



MAPPING NOTE:
 PHASING HAS BEEN CHANGED TO
 THE CUST. POINT ON THIS TAP



MAPPING NOTE:
PHASING HAS BEEN CHANGED TO
THE CUST. POINT ON THIS TAP



- 27
- New 1168 1/0 ACSR
- New 1 40-5
- New 1 C1.11
- New 1 H1.1
- New 1 UA2 8T

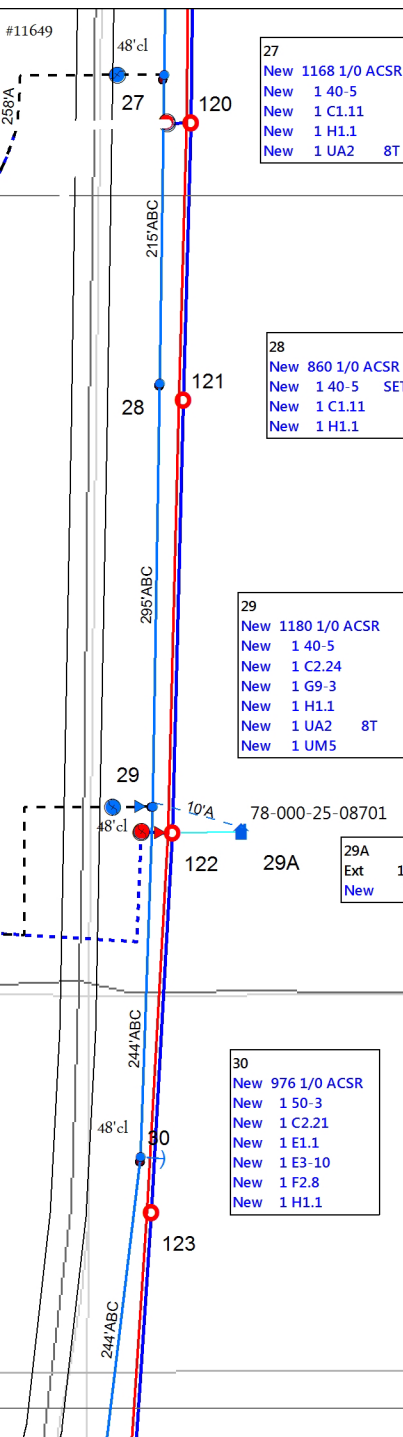
- 28
- New 860 1/0 ACSR
- New 1 40-5 SET 9' DEEP
- New 1 C1.11
- New 1 H1.1

- 29
- New 1180 1/0 ACSR
- New 1 40-5
- New 1 C2.24
- New 1 G9-3
- New 1 H1.1
- New 1 UA2 8T
- New 1 UM5

- 29A
- Ext 1 CONS-UG
- New 10 4/0 USE

- 30
- New 976 1/0 ACSR
- New 1 50-3
- New 1 C2.21
- New 1 E1.1
- New 1 E3-10
- New 1 F2.8
- New 1 H1.1

MAPPING NOTE:
PHASING ON THIS TAP HAS BEEN CHANGED
TO THE FIRST BOX ON THE LINE
CHANGING TO 'A' PHASE



Hawthorn Rd



MAPPING NOTE:
PHASING HAS BEEN CHANGED TO
THE CUST. POINT ON THIS TAP

31
New 976 1/0 ACSR
New 1 45-4
New 1 C2.21
New 1 E1.1L
New 1 E3-10
New 1 F2.10
New 1 H1.1

33.2
Ext 1 40-5
Ext 1 A4.1
Ext 1 E1.1
Ext 1 H1.1
New 1 E1.1
New 1 E3-10
New 1 F2.8
New 1 G10-15
Ret 548 4 ACSR
Ret 1 A5.1
Ret 1 E1.1
Ret 1 F2.8
Ret 1 G10-10
Ret 1 S1.1

32
New 976 1/0 ACSR
New 1 40-5
New 1 C2.21
New 2 E1.1
New 1 E3-10
New 2 F2.8
New 1 H1.1

LINE SOUTH TO BE TAPPED ON 'C' PHASE
MAPPING NOTE:
PHASING ON THIS TAP HAS BEEN CHANGED
TO THE FIRST EXISTING POLE ON THE LINE

LINE EAST TO BE TAPPED ON 'B' PHASE
MAPPING NOTE:
PHASING ON THIS TAP HAS BEEN CHANGED
TO THE FIRST EXISTING POLE ON THE LINE

33
New 956 1/0 ACSR
New 1 40-5
New 1 A5.3
New 1 C5.71L FIBERGLASS ARM
New 1 E1.5
New 1 E3.1LG
New 3 E3-10
New 3 F2.10
New 1 H1.1
New 1 L1.5
New 1 L2.5
New 2 S1.01 SLUG

33.1
Ext 1 45-3
Ext 1 A6.1
Ext 1 H1.1
Ret 1 R1.1 A3584

78-000-36-12400

Jewel Rd

King Rd

215th Ave

33.3

33.2B

33.2A

33.2

33

33.1

32

31

126

125

124

48' cl

48' cl

48' cl

#16165

239/ABC

244/ABC

320/C

297/B

297/C


LOCATIONS - GRID



Staked By: LUKE M KASELLA	RUS Code: 326	W/O #: 294973
Date: 2/9/2016 12:00:00AM	EXT 740 C:	LOC #:
Signed By:	Loan Nbr: BA8	Name: SUBSTATION-LITTLE FALLS
Date:	Loan Ywr: 2014	Acct #:
Comments 1:		

LOCATIONS - STATUS		PRIMARY CONSTRUCTION				EQUIPMENT / LIGHTS / MISCELLANEOUS			GROUNDING / GUYS / ANCHORS			SECONDARY / SERVICE CONSTRUCTION				
LOCATION	STS	TOTAL	STRUCTURE	(# WIRES)-FT-SIZE	(QTY) - UNITS	TRANSFORMER-[KVA]	(QTY)-EQUIPMENT	(QTY)-MISC	(QTY)-GRNDS	(QTY)-GUYS	(QTY)-ANCRS	(QTY)-UNITS	TOTAL	(# WIRES)-FT-SIZE	METERING	
1	EXS								(1)- H1.1		(8)- F2.8					
	EXS	996	45-4	(3)-332-4/0 ACSR	(1)- C4.2L					(2)- E4.3LG						
	EXS	332		(1)-332-1/0 ACSR												
	RET						(1)- R1.1	(1.00)- L1.5		(1)- E1.5						
	RET							(1.00)- L2.5								
	NEW				(1)- C5.1					(3)- E1.5						
LAT: -94.229026		LONG: 46.005172														
2	NEW	408	45-4	(4)-102-1/0 ACSR	(1)- C4.1G				(1)- H1.1	(2)- E3.1LG	(1)- F6.6					
	NEW									(6)- E3-10	(4)- F2.10					
LAT: -94.228779		LONG: 46.005439														
3	NEW	984	40-5	(4)-246-1/0 ACSR	(1)- C1.11		(1)- S1.01		(1)- H1.1	(1)- E1.1	(1)- F2.10					
	NEW									(1)- E3-10						
LAT: -94.227812		LONG: 46.005458														
3.1	EXS	374	35-5	(2)-187-4 ACSR	(1)- A1.1											
LAT: -94.227788		LONG: 46.004682														
3.2	EXS														(1)- OWNER LOOP	
	EXS	462	35-5	(2)-231-4 ACSR	(1)- A5.1	G10-10- [10]			(1)- H1.1	(1)- E1.1	(1)- F2.8					
LAT: -94.227783		LONG: 46.004049														
3.2A	EXS												194	(1)-194-UG-MODEL		
	EXS														(1)- CONS-OH	
LAT: -94.227472		LONG: 46.003564														
4	NEW	1200	40-5	(4)-300-1/0 ACSR			(1)- R3.2		(1)- H1.1							
LAT: -94.226630		LONG: 46.005466														
5	NEW	1200	40-5	(4)-300-1/0 ACSR	(1)- C1.11				(1)- H1.1							
LAT: -94.225451		LONG: 46.005471														
6	NEW	1200	40-5	(4)-300-1/0 ACSR	(1)- C1.11				(1)- H1.1							
LAT: -94.224269		LONG: 46.005481														

LOCATIONS - GRID

	Staked By: LUKE M KASELLA	RUS Code: 326	W/O #: 294973
	Date: 2/9/2016 12:00:00AM	EXT 740 C:	LOC #:
	Signed By:	Loan Nbr: BA8	Name: SUBSTATION-LITTLE FALLS
	Date:	Loan Ywr: 2014	Acct #:
	Comments 1:		

LOCATIONS - STATUS		PRIMARY CONSTRUCTION				EQUIPMENT / LIGHTS / MISCELLANEOUS			GROUNDING / GUYS / ANCHORS			SECONDARY / SERVICE CONSTRUCTION				
LOCATION	STS	TOTAL	STRUCTURE	(# WIRES)-FT-SIZE	(QTY) - UNITS	TRANSFORMER-[KVA]	(QTY)-EQUIPMENT	(QTY)-MISC	(QTY)-GRNDS	(QTY)-GUYS	(QTY)-ANCRS	(QTY)-UNITS	TOTAL	(# WIRES)-FT-SIZE	METERING	
7	NEW	1200	40-5	(4)-300-1/0 ACSR	(1)- C1.11				(1)- H1.1							
LAT: -94.223088		LONG: 46.005485														
8	NEW	1200	40-5	(4)-300-1/0 ACSR	(1)- C1.11				(1)- H1.1							
LAT: -94.221907		LONG: 46.005497														
9	NEW	1192	40-5	(4)-298-1/0 ACSR	(1)- C1.11		(1)- S1.01		(1)- H1.1	(1)- E1.1	(1)- F2.8					
	NEW				(1)- A5.3					(1)- E3-10						
LAT: -94.220734		LONG: 46.005506														
9.1	EXS	312		(2)-156-4 ACSR							(2)- F2.8					
	EXS		35-5		(1)- A4.1				(1)- H1.1	(2)- E1.1						
LAT: -94.220232		LONG: 46.005751														
9.2	EXS														(1)- OWNER LOOP	
	EXS	332	35-5	(2)-166-4 ACSR	(1)- A5.1	G10-10- [10]			(1)- H1.1	(1)- E1.1	(1)- F2.8					
LAT: -94.220691		LONG: 46.006074														
9.2A	EXS												66	(1)-66-UG-MODEL		
	EXS														(1)- CONS-OH	
LAT: -94.220837		LONG: 46.006223														
10	NEW	1192	40-5	(4)-298-1/0 ACSR	(1)- C1.11				(1)- H1.1							
LAT: -94.219562		LONG: 46.005495														
11	NEW	1184	40-5	(4)-296-1/0 ACSR	(1)- C1.11				(1)- H1.1	(1)- E1.1	(1)- F2.8					
	NEW									(1)- E3-10						
LAT: -94.218397		LONG: 46.005480														
12	NEW	1200	40-5	(4)-300-1/0 ACSR	(1)- C1.11				(1)- H1.1							
LAT: -94.217220		LONG: 46.005411														
13	NEW	1200	40-5	(4)-300-1/0 ACSR	(1)- C1.11				(1)- H1.1	(1)- E1.1	(1)- F2.8					
	NEW									(1)- E3-10						
LAT: -94.216042		LONG: 46.005346														

LOCATIONS - GRID



Staked By: LUKE M KASELLA	RUS Code: 326	W/O #: 294973
Date: 2/9/2016 12:00:00AM	EXT 740 C:	LOC #:
Signed By:	Loan Nbr: BA8	Name: SUBSTATION-LITTLE FALLS
Date:	Loan Ywr: 2014	Acct #:
Comments 1:		

LOCATIONS - STATUS		PRIMARY CONSTRUCTION				EQUIPMENT / LIGHTS / MISCELLANEOUS			GROUNDING / GUYS / ANCHORS			SECONDARY / SERVICE CONSTRUCTION				
LOCATION	STS	TOTAL	STRUCTURE	(# WIRES)-FT-SIZE	(QTY) - UNITS	TRANSFORMER-[KVA]	(QTY)-EQUIPMENT	(QTY)-MISC	(QTY)-GRNDS	(QTY)-GUYS	(QTY)-ANCRS	(QTY)-UNITS	TOTAL	(# WIRES)-FT-SIZE	METERING	
14	NEW	1200	40-5	(4)-300-1/0 ACSR	(1)- C1.11				(1)- H1.1	(1)- E1.1	(1)- F2.8					
	NEW									(1)- E3-10						
LAT: -94.214861		LONG: 46.005301														
15	NEW	1204	40-5	(4)-301-1/0 ACSR	(1)- C1.11				(1)- H1.1							
LAT: -94.213677		LONG: 46.005288														
16	NEW	1168	40-5	(4)-292-1/0 ACSR	(1)- C1.11				(1)- H1.1							
LAT: -94.212529		LONG: 46.005279														
17	NEW	1168	40-5	(4)-292-1/0 ACSR	(1)- C1.11				(1)- H1.1							
LAT: -94.211380		LONG: 46.005269														
18	NEW	1168	40-5	(4)-292-1/0 ACSR	(1)- C1.11				(1)- H1.1							
LAT: -94.210231		LONG: 46.005263														
19	NEW	1168	40-5	(4)-292-1/0 ACSR	(1)- C2.24				(1)- H1.1							
LAT: -94.209080		LONG: 46.005254														
20	NEW	1168	45-4	(4)-292-1/0 ACSR	(2)- C5.71L			(1.00)- L1.5	(1)- H1.1	(2)- E3.1LG	(6)- F2.10					
	NEW							(1.00)- L2.5		(1)- E1.5						
	NEW									(6)- E3-10						
LAT: -94.207933		LONG: 46.005243		USE C6.91G FRAMING GUIDE												
20.1	EXS	546		(2)-273-4 ACSR												
	NEW		40-5		(1)- A6.1			(1)- S1.1		(1)- H1.1						
LAT: -94.206857		LONG: 46.005248														
20.2	EXS	546		(2)-273-4 ACSR												
	NEW		35-5		(1)- A1.1											
LAT: -94.205783		LONG: 46.005249														
20.3																
	EXS	218		(2)-109-4 ACSR												
	EXS		35-5		(1)- A1.1											
LAT: -94.205357		LONG: 46.005216														


LOCATIONS - GRID



Staked By: LUKE M KASELLA	RUS Code: 326	W/O #: 294973
Date: 2/9/2016 12:00:00AM	EXT 740 C:	LOC #:
Signed By:	Loan Nbr: BA8	Name: SUBSTATION-LITTLE FALLS
Date:	Loan Ywr: 2014	Acct #:
Comments 1:		


LOCATIONS - STATUS		PRIMARY CONSTRUCTION				EQUIPMENT / LIGHTS / MISCELLANEOUS			GROUNDING / GUYS / ANCHORS			SECONDARY / SERVICE CONSTRUCTION				
LOCATION	STS	TOTAL	STRUCTURE	(# WIRES)-FT-SIZE	(QTY) - UNITS	TRANSFORMER-[KVA]	(QTY)-EQUIPMENT	(QTY)-MISC	(QTY)-GRNDS	(QTY)-GUYS	(QTY)-ANCRS	(QTY)-UNITS	TOTAL	(# WIRES)-FT-SIZE	METERING	
21	NEW	1200	40-5	(4)-300-1/0 ACSR	(1)- C2.24				(1)- H1.1							
LAT: -94.207957		LONG: 46.004421														
22	RET	522	40-5	(2)-261-4 ACSR	(1)- A1.1				(1)- H1.1	(1)- E1.1	(1)- F1.12					
	RET				(1)- A5.1											
	NEW	1204	40-5	(4)-301-1/0 ACSR	(1)- C1.11		(1)- S1.01		(1)- H1.1	(1)- E1.1	(1)- F2.10					
	NEW				(1)- A5.21					(1)- E1.5						
	NEW									(1)- E3-10						
LAT: -94.207984		LONG: 46.003595														
22.1	EXS	240	40-5	(2)-120-4 ACSR	(1)- A6.1				(1)- H1.1	(1)- E1.1	(1)- F2.8					
LAT: -94.208454		LONG: 46.003576														
22.2	EXS	418	35-5	(2)-209-4 ACSR	(1)- A2.1											
LAT: -94.209276		LONG: 46.003543														
22.3	EXS											(1)- K15L				
	EXS	584	35-5	(2)-292-4 ACSR	(1)- A5.1	G10-25- [25]			(1)- H1.1	(1)- E1.1	(1)- F2.8					
LAT: -94.210424		LONG: 46.003498														
22.3A	EXS														(1)- OWNER LOOP	
	EXS		30-6						(1)- H1.1	(1)- E1.1	(1)- F1.12	(1)- K1.1	112	(1)-112-1/0 TX		
LAT: -94.210838		LONG: 46.003492														
22.3B													40	(1)-40-UG-MODEL		
	EXS														(1)- CONS-OH	
LAT: -94.210917		LONG: 46.003585														
23	NEW	1172	40-5	(4)-293-1/0 ACSR	(1)- C1.11				(1)- H1.1							
LAT: -94.208000		LONG: 46.002791														
24	NEW	1172	40-5	(4)-293-1/0 ACSR	(1)- C1.11				(1)- H1.1							
LAT: -94.208017		LONG: 46.001988														
25	NEW	1172	40-5	(4)-293-1/0 ACSR	(1)- C1.11				(1)- H1.1							
LAT: -94.208034		LONG: 46.001184														

LOCATIONS - GRID

	Staked By: LUKE M KASELLA	RUS Code: 326	W/O #: 294973
	Date: 2/9/2016 12:00:00AM	EXT 740 C:	LOC #:
	Signed By:	Loan Nbr: BA8	Name: SUBSTATION-LITTLE FALLS
	Date:	Loan Ywr: 2014	Acct #:
	Comments 1:		


LOCATIONS - STATUS		PRIMARY CONSTRUCTION				EQUIPMENT / LIGHTS / MISCELLANEOUS			GROUNDING / GUYS / ANCHORS			SECONDARY / SERVICE CONSTRUCTION				
LOCATION	STS	TOTAL	STRUCTURE	(# WIRES)-FT-SIZE	(QTY) - UNITS	TRANSFORMER-[KVA]	(QTY)-EQUIPMENT	(QTY)-MISC	(QTY)-GRNDS	(QTY)-GUYS	(QTY)-ANCRS	(QTY)-UNITS	TOTAL	(# WIRES)-FT-SIZE	METERING	
26	NEW	1172	35-5	(4)-293-1/0 ACSR	(1)- C1.11				(1)- H1.1							
LAT: -94.208050		LONG: 46.000381														
27	NEW	1168	40-5	(4)-292-1/0 ACSR	(1)- C1.11		(1)- UA2		(1)- H1.1							
LAT: -94.208067		LONG: 45.999581														
27.1																
	EXS	258		(1)-258-1/0 25KV					(1.00)- UM27-2							
	EXS								(1.00)- UM6-1							
	EXS								(1.00)- UM6-34							
	EXS					UG7-15- [15]										
LAT: -94.208721		LONG: 45.999203														
27.1A																
	EXS														(1)- OWNER PED	
	EXS												45	(1)-45-4/0 USE		
LAT: -94.208865		LONG: 45.999257														
27.1B																
	EXS												32	(1)-32-UG-MODEL		
	EXS														(1)- CONS-UG	
LAT: -94.208931		LONG: 45.999182														
28	NEW	860	40-5	(4)-215-1/0 ACSR	(1)- C1.11				(1)- H1.1							
LAT: -94.208080		LONG: 45.998991														
29	NEW	1180	40-5	(4)-295-1/0 ACSR	(1)- C2.24	G9-3- [3]	(1)- UM5		(1)- H1.1							
	NEW						(1)- UA2									
LAT: -94.208099		LONG: 45.998183														
29A	EXS														(1)- OWNER PED	
	EXS														(1)- CONS-UG	
	NEW												10	(1)-10-4/0 USE		
LAT: -94.207855		LONG: 45.998135														

LOCATIONS - GRID

	Staked By: LUKE M KASELLA	RUS Code: 326	W/O #: 294973
	Date: 2/9/2016 12:00:00AM	EXT 740 C:	LOC #:
	Signed By:	Loan Nbr: BA8	Name: SUBSTATION-LITTLE FALLS
	Date:	Loan Ywr: 2014	Acct #:
	Comments 1:		

LOCATIONS - STATUS		PRIMARY CONSTRUCTION				EQUIPMENT / LIGHTS / MISCELLANEOUS			GROUNDING / GUYS / ANCHORS			SECONDARY / SERVICE CONSTRUCTION				
LOCATION	STS	TOTAL	STRUCTURE	(# WIRES)-FT-SIZE	(QTY) - UNITS	TRANSFORMER-[KVA]	(QTY)-EQUIPMENT	(QTY)-MISC	(QTY)-GRNDS	(QTY)-GUYS	(QTY)-ANCRS	(QTY)-UNITS	TOTAL	(# WIRES)-FT-SIZE	METERING	
29.1																
	EXS	3730		(1)-3730-1/0 25KV SOL				(1.00)- UM27-2								
	EXS							(3.00)- UM6-1								
	EXS							(1.00)- UM6-10-15								
	EXS							(1.00)- UM6-22-15								
	EXS		UM3-14													
LAT: -94.222408		LONG: 45.998374														
30	NEW	976	50-3	(4)-244-1/0 ACSR	(1)- C2.21				(1)- H1.1	(1)- E1.1	(1)- F2.8					
	NEW									(1)- E3-10						
LAT: -94.208134		LONG: 45.997514														
31	NEW	976	45-4	(4)-244-1/0 ACSR	(1)- C2.21				(1)- H1.1	(1)- E1.1L	(1)- F2.10					
	NEW									(1)- E3-10						
LAT: -94.208247		LONG: 45.996849														
32	NEW	976	40-5	(4)-244-1/0 ACSR	(1)- C2.21				(1)- H1.1	(2)- E1.1	(2)- F2.8					
	NEW									(1)- E3-10						
LAT: -94.208566		LONG: 45.996218														
33	NEW	956	40-5	(4)-239-1/0 ACSR	(1)- C5.71L		(2)- S1.01	(1.00)- L1.5	(1)- H1.1	(1)- E1.5	(3)- F2.10					
	NEW				(1)- A5.3			(1.00)- L2.5		(1)- E3.1LG						
	NEW									(3)- E3-10						
LAT: -94.209087		LONG: 45.995672														
33.1																
	EXS	582		(2)-291-4 ACSR												
	EXS		45-3		(1)- A6.1				(1)- H1.1							
	RET						(1)- R1.1									
LAT: -94.208352		LONG: 45.995059														

LOCATIONS - GRID

	Staked By: LUKE M KASELLA	RUS Code: 326	W/O #: 294973
	Date: 2/9/2016 12:00:00AM	EXT 740 C:	LOC #:
	Signed By:	Loan Nbr: BA8	Name: SUBSTATION-LITTLE FALLS
	Date:	Loan Ywr: 2014	Acct #:
	Comments 1:		

LOCATIONS - STATUS		PRIMARY CONSTRUCTION				EQUIPMENT / LIGHTS / MISCELLANEOUS			GROUNDING / GUYS / ANCHORS			SECONDARY / SERVICE CONSTRUCTION				
LOCATION	STS	TOTAL	STRUCTURE	(# WIRES)-FT-SIZE	(QTY) - UNITS	TRANSFORMER-[KVA]	(QTY)-EQUIPMENT	(QTY)-MISC	(QTY)-GRNDS	(QTY)-GUYS	(QTY)-ANCRS	(QTY)-UNITS	TOTAL	(# WIRES)-FT-SIZE	METERING	
33.2	EXS	162		(2)-81-4 ACSR							(1)- F2.8	(1)- K15L				
	EXS		40-5		(1)- A4.1				(1)- H1.1	(1)- E1.1						
	RET	548		(2)-274-4 ACSR	(1)- A5.1	G10-10- [10]	(1)- S1.1			(1)- E1.1	(1)- F2.8					
	NEW					G10-15- [15]				(1)- E1.1	(1)- F2.8					
	NEW									(1)- E3-10						
LAT: -94.209340		LONG: 45.995809														
33.2A	EXS														(1)- OWNER LOOP	
	EXS		30-6						(1)- H1.1	(1)- E1.1	(1)- F2.8	(1)- K15L	150	(1)-150-1/0 TX		
LAT: -94.209597		LONG: 45.996154														
33.2B																
	EXS												78	(1)-78-UG-MODEL		
	EXS														(1)- CONS-OH	
LAT: -94.209416		LONG: 45.996326														
33.3	EXS	640	35-5	(2)-320-4 ACSR	(1)- A2.1					(1)- E1.1	(1)- F1.12					
LAT: -94.210344		LONG: 45.995279														
100	RET	70		(2)-35-4 ACSR												
LAT: -94.228890		LONG: 46.005173														
101	RET	624	35-5	(2)-312-4 ACSR	(1)- A5.1		(1)- S1.1		(1)- H1.1	(1)- E1.1	(1)- F2.8					
	RET				(1)- A1.1											
	NEW	192		(2)-96-4 ACSR												
LAT: -94.227798		LONG: 46.005195														
101.1	EXS	36		(2)-18-4 ACSR												
LAT: -94.227796		LONG: 46.005146														
102	RET	596	35-5	(2)-298-4 ACSR	(1)- A6.2				(1)- H1.1							
LAT: -94.226624		LONG: 46.005211														
103	RET	604	35-5	(2)-302-4 ACSR	(1)- A1.1											
LAT: -94.225434		LONG: 46.005227														

LOCATIONS - GRID



Staked By: LUKE M KASELLA	RUS Code: 326	W/O #: 294973
Date: 2/9/2016 12:00:00AM	EXT 740 C:	LOC #:
Signed By:	Loan Nbr: BA8	Name: SUBSTATION-LITTLE FALLS
Date:	Loan Ywr: 2014	Acct #:
Comments 1:		

LOCATIONS - STATUS		PRIMARY CONSTRUCTION				EQUIPMENT / LIGHTS / MISCELLANEOUS			GROUNDING / GUYS / ANCHORS			SECONDARY / SERVICE CONSTRUCTION				
LOCATION	STS	TOTAL	STRUCTURE	(# WIRES)-FT-SIZE	(QTY) - UNITS	TRANSFORMER-[KVA]	(QTY)-EQUIPMENT	(QTY)-MISC	(QTY)-GRNDS	(QTY)-GUYS	(QTY)-ANCRS	(QTY)-UNITS	TOTAL	(# WIRES)-FT-SIZE	METERING	
104	RET	604	35-5	(2)-302-4 ACSR	(1)- A2.3				(1)- M2-9	(1)- E1.1	(1)- F2.8					
LAT: -94.224246		LONG: 46.005244														
105	RET	580	40-5	(2)-290-4 ACSR	(1)- A2.3					(1)- E1.1	(1)- F2.8					
LAT: -94.223147		LONG: 46.005453														
106	RET	604	40-5	(2)-302-4 ACSR	(1)- A2.1											
LAT: -94.221958		LONG: 46.005450														
107	RET	630	35-5	(2)-315-4 ACSR	(1)- A2.3		(1)- UA1		(1)- H1.1	(1)- E1.1	(1)- F2.8					
LAT: -94.220720		LONG: 46.005473														
108	RET	25		(1)-25-1/0 25KV												
LAT: -94.220660		LONG: 46.005420														
109	RET	2053	UM3-14	(1)-2053-1/0 25KV				(2.00)- UM6-1								
	RET							(1.00)- UM6-10-15								
	RET							(1.00)- UM27-2								
	RET							(1.00)- UM6-22-15								
LAT: -94.212624		LONG: 46.005101														
110	RET	294		(1)-294-1/0 25KV												
LAT: -94.211497		LONG: 46.005157														
111	RET	38	35-5	(1)-38-1/0 25KV	(1)- A5.1		(1)- UA1		(1)- H1.1	(1)- E1.1	(1)- F2.10					
LAT: -94.211430		LONG: 46.005250														
112	RET	592	35-5	(1)-296-1/0 ACSR	(1)- A1.1											
LAT: -94.210265		LONG: 46.005230														
113	RET	604	35-5	(1)-302-1/0 ACSR	(1)- A2.1											
LAT: -94.209077		LONG: 46.005230														
114	RET	564	40-5	(1)-282-1/0 ACSR	(1)- A2.1		(1)- S1.1	(1.00)- L1.5	(1)- H1.1	(1)- E1.1	(1)- F2.10					
	RET				(1)- A5.1			(1.00)- L2.5								
LAT: -94.207966		LONG: 46.005218														


LOCATIONS - GRID



Staked By: LUKE M KASELLA	RUS Code: 326	W/O #: 294973
Date: 2/9/2016 12:00:00AM	EXT 740 C:	LOC #:
Signed By:	Loan Nbr: BA8	Name: SUBSTATION-LITTLE FALLS
Date:	Loan Ywr: 2014	Acct #:
Comments 1:		

LOCATIONS - STATUS		PRIMARY CONSTRUCTION				EQUIPMENT / LIGHTS / MISCELLANEOUS			GROUNDING / GUYS / ANCHORS			SECONDARY / SERVICE CONSTRUCTION				
LOCATION	STS	TOTAL	STRUCTURE	(# WIRES)-FT-SIZE	(QTY) - UNITS	TRANSFORMER-[KVA]	(QTY)-EQUIPMENT	(QTY)-MISC	(QTY)-GRNDS	(QTY)-GUYS	(QTY)-ANCRS	(QTY)-UNITS	TOTAL	(# WIRES)-FT-SIZE	METERING	
114.1	RET	388	35-5	(2)-194-4 ACSR	(1)- A1.1				(1)- H1.1							
LAT: -94.207942		LONG: 46.005749														
114.2	RET	706	35-5	(2)-353-4 ACSR	(1)- A5.1				(1)- H1.1	(2)- E1.1	(1)- F2.8					
LAT: -94.207943		LONG: 46.006717														
114.3																
	RET		35-5		(1)- A1.1											
LAT: -94.206637		LONG: 46.005211														
115	RET	662	35-5	(2)-331-4 ACSR	(1)- A2.1				(1)- H1.1							
LAT: -94.207970		LONG: 46.004310														
116	RET	632	35-5	(2)-316-4 ACSR	(1)- A1.1											
LAT: -94.207991		LONG: 46.002729														
117	RET	642	35-5	(2)-321-4 ACSR	(1)- A1.1											
LAT: -94.208003		LONG: 46.001849														
118	RET	700	35-5	(2)-350-4 ACSR	(1)- A1.1											
LAT: -94.207976		LONG: 46.000891														
119	RET	622	35-5	(2)-311-4 ACSR	(1)- A1.1											
LAT: -94.207984		LONG: 46.000037														
120	RET	400	35-5	(2)-200-4 ACSR	(1)- A1.1			(1)- UA1	(1)- H1.1							
LAT: -94.207994		LONG: 45.999489														
121	RET	386	35-5	(2)-193-4 ACSR	(1)- A1.1											
LAT: -94.208014		LONG: 45.998960														
122	RET	604	40-5	(2)-302-4 ACSR	(1)- A2.1	G9-3- [3]		(1)- UA1	(1)- H1.1							
LAT: -94.208045		LONG: 45.998133														
123	RET	530	40-5	(2)-265-4 ACSR	(1)- A1.1											
LAT: -94.208104		LONG: 45.997408														
124	RET	392	40-5	(2)-196-4 ACSR	(1)- A2.3					(1)- E1.1	(1)- F1.12					
LAT: -94.208155		LONG: 45.996873														

LOCATIONS - GRID

	Staked By: LUKE M KASELLA	RUS Code: 326	W/O #: 294973
	Date: 2/9/2016 12:00:00AM	EXT 740 C:	LOC #:
	Signed By:	Loan Nbr: BA8	Name: SUBSTATION-LITTLE FALLS
	Date:	Loan Ywr: 2014	Acct #:
	Comments 1:		

LOCATIONS - STATUS		PRIMARY CONSTRUCTION				EQUIPMENT / LIGHTS / MISCELLANEOUS			GROUNDING / GUYS / ANCHORS			SECONDARY / SERVICE CONSTRUCTION			
LOCATION	STS	TOTAL	STRUCTURE	(# WIRES)-FT-SIZE	(QTY) - UNITS	TRANSFORMER-[KVA]	(QTY)-EQUIPMENT	(QTY)-MISC	(QTY)-GRNDS	(QTY)-GUYS	(QTY)-ANCRS	(QTY)-UNITS	TOTAL	(# WIRES)-FT-SIZE	METERING
125	RET	486	40-5	(2)-243-4 ACSR	(1)- A2.3					(1)- E1.1	(1)- F1.12				
LAT: -94.208457		LONG: 45.996241													
126															
	RET		40-5		(1)- A2.1										
LAT: -94.209049		LONG: 45.995582													