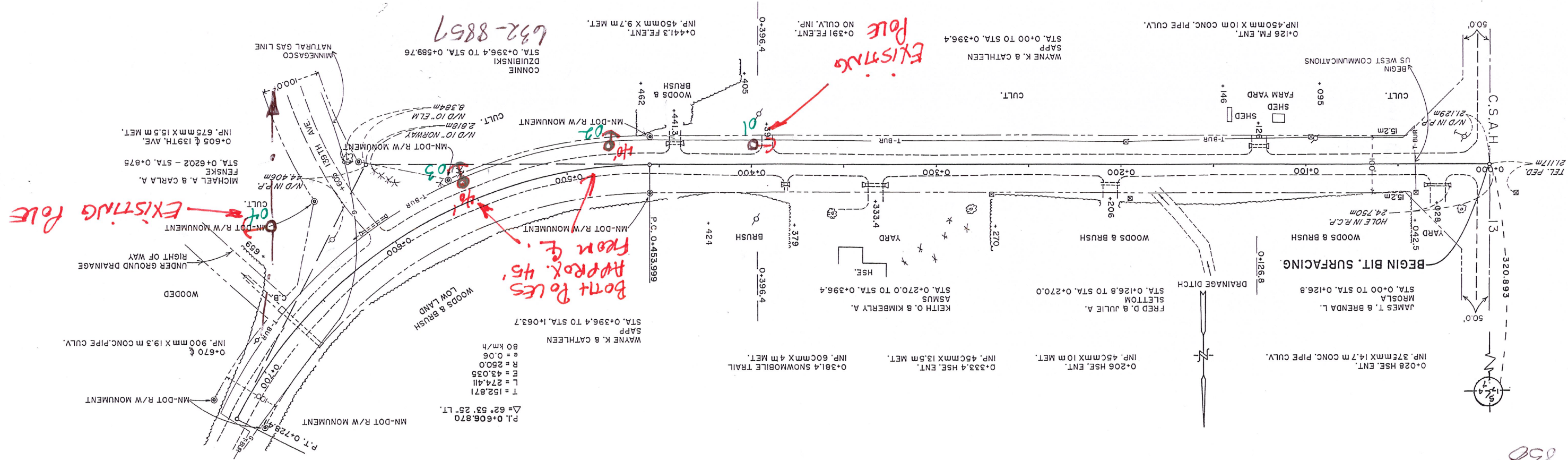


B.M. ELEV. 341.9155
SFK. IN 30" BURR, OAK
STA. 6+79.5 RT. 16.4m

B.M. ELEV. 345.7262
SFK. IN 16" W. OAK
STA. -0+021.3 LT. 14.6m

A5 - BUILT 98



P.I. 0+606.870
 $\Delta = 62^\circ 53' 25''$ LT.
T = 152.871
L = 274.411
E = 43.035
R = 250.0
80 km/h

Both Poles
Approx. 45'
From E.

EXISTING
POLE

632-8857

V.L. # 20145822
0106035

3 spans @ 283

342.51	0+000
344.87	0+100
344.52	0+200
344.20	0+300
343.71	0+400
343.39	0+500
343.01	0+600
342.76	0+700
342.58	0+800
342.40	0+900
342.32	1+000
342.31	1+100
342.30	1+200
342.47	1+300
342.60	1+400
4	1+500
26	1+600

344 342

850