

# Motley Area 115 kV Transmission Project



**Great River Energy**  
 12300 Elm Creek Blvd  
 Maple Grove, MN 55369  
 1-888-521-0130  
[www.greatriverenergy.com](http://www.greatriverenergy.com)



**Crow Wing Power**  
 PO Box 507  
 Brainerd, MN 56401  
 1-800-648-9401  
[www.cwpower.com](http://www.cwpower.com)

## Project Need

Great River Energy proposes to build and operate approximately 15.5-16.5 miles of new 115 kilovolt (kV) overhead transmission line in northern Morrison County, southern Cass County, and eastern Todd County to ensure the reliability of electric service to the members of Crow Wing Power (CWP). The project would:

- Strengthen the electric transmission system in the Motley area, as the existing 34.5 kV system serving the area is becoming outdated and is reaching its maximum capacity.
- Provide electric service to the proposed new CWP Fish Trap Lake distribution substation that would provide electric power to a new pipeline pumping station proposed by Minnesota Pipe Line Company (MPL).
- Allow CWP to convert its existing Motley 34.5 kV distribution substation to operate at 115 kV due to the close proximity of the new 115 kV line to the existing substation.
- Prepare the transmission system for a future CWP distribution substation, which CWP anticipates needing in the Shamineau Lake area. This future substation could not be adequately served by the existing 34.5 kV transmission system in this area.

## Project Description

The map on the next page shows the preliminary transmission line routes proposed for this project. The proposed project would connect the existing Minnesota Power 115 kV "24" transmission line at one of two locations, designated the west and east options on the map, to the existing Motley Substation at the intersection of Azalea Road and County Road 2. The west or east route option would require the construction of approximately 3.8 or 4.8 miles of new overhead 115 kV transmission line, respectively. From the Motley Substation, the new 115 kV overhead transmission line would continue westerly approximately 3.3 miles and then southerly approximately 7.2 miles to serve the new CWP Fish Trap Lake distribution substation, which will be constructed on MPL's pipeline pumping station property located at U.S. Hwy. 10 and Holt Road. In most areas, the new transmission line would require a 100-foot-wide right of way, 50 feet on each side of the centerline. Some segments of the transmission line would carry lower-voltage distribution lines as underbuild. In most cases, single round wood poles ranging in height from 60 - 90 feet above ground would be used (see photo below). The typical distance between poles would range from 250 - 400 feet.

As a component of this project, additional circuit breakers will be added to Minnesota Power's existing Dog Lake Substation and approximately 0.5 miles of new 115 kV transmission line will be constructed for system reliability.

## Permitting

The Minnesota Public Utilities Commission (Commission) must issue a Certificate of Need (CON) and a Route Permit before the project can proceed. Great River Energy will submit a combined CON/Route Permit application containing relevant information that will help the Commission determine if there is sufficient need for the project and evaluate the proposed route and any alternative routes brought forth by the public. At the conclusion of the permitting process, the Commission will determine the final location of the proposed transmission facilities.

The public and regulatory agencies will have numerous opportunities to provide input during the CON and Route Permitting process, which is conducted and facilitated by Commission and Minnesota Department of Commerce (DOC) staff. Public meetings will be held and other opportunities will be provided for collecting comments and responses. The DOC will prepare an Environmental Assessment document for the project.

## Tree Removal

Removal of trees and certain vegetation along the transmission line right-of-way will be necessary for safety, construction and maintenance purposes. Prior to tree removal activities, landowners will be contacted.

## Project Schedule

Project notification and open house -----	Fall 2014
Permitting -----	March 2015 – April 2016
Easement acquisition -----	2016
Transmission line design -----	2016
Environmental permits -----	2016
Transmission line construction -----	2017
Energization -----	Late 2017



*Typical 115 kV Wood  
Transmission Line  
Structure*

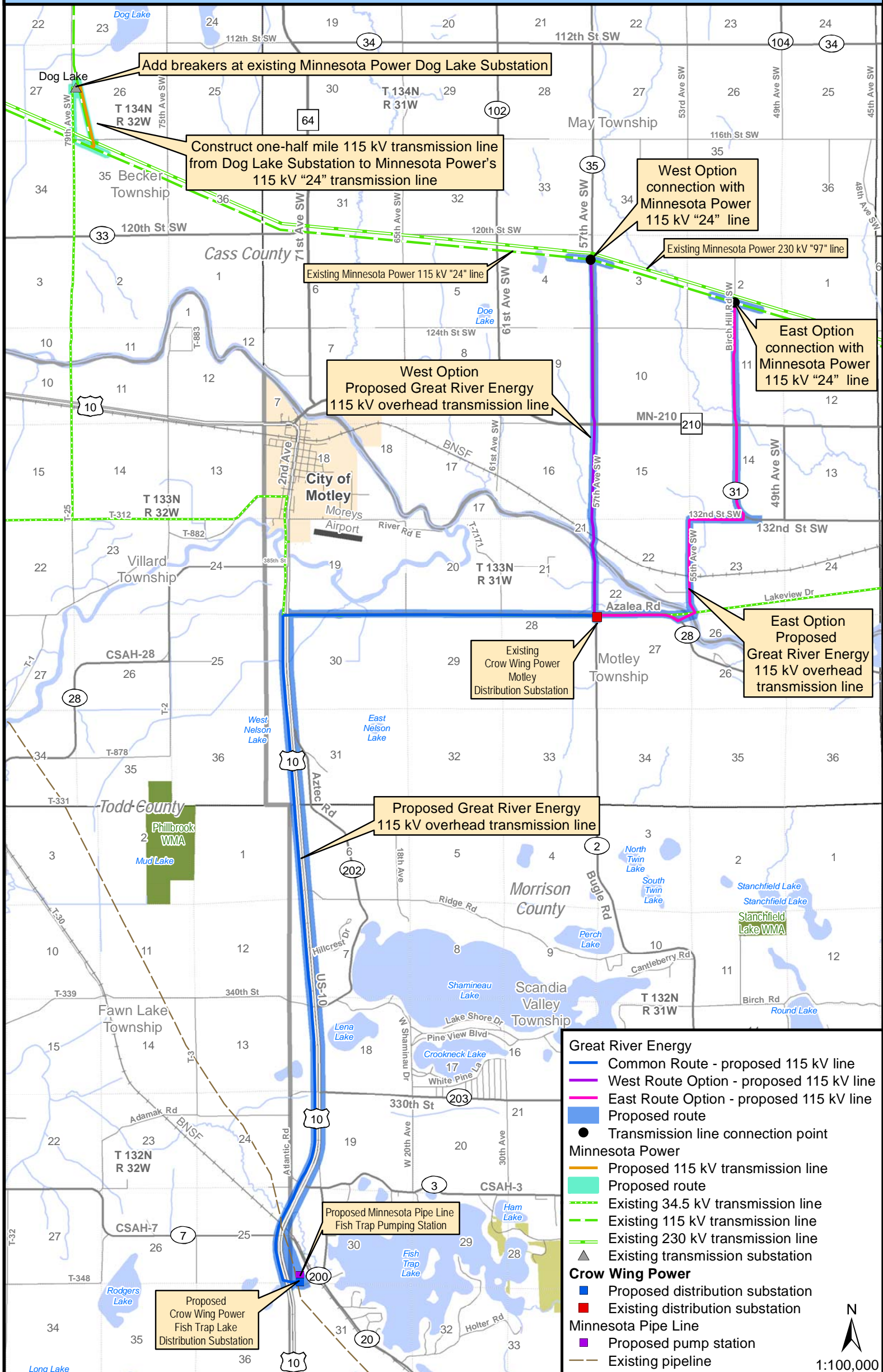
**For project updates and information, visit [greatriverenergy.com/motley](http://greatriverenergy.com/motley) or contact:**

Rick Heuring  
 Sr. Field Representative  
 Great River Energy - Land Rights Department  
 (763) 445-5979  
[rheuring@grenergy.com](mailto:rheuring@grenergy.com)

Mark Strohfus  
 Environmental Project Lead  
 Great River Energy – Environmental Services Department  
 763-445-5210  
[mstrohfus@grenergy.com](mailto:mstrohfus@grenergy.com)

Date last revised: 5/26/2015

# Project Map



1:100,000