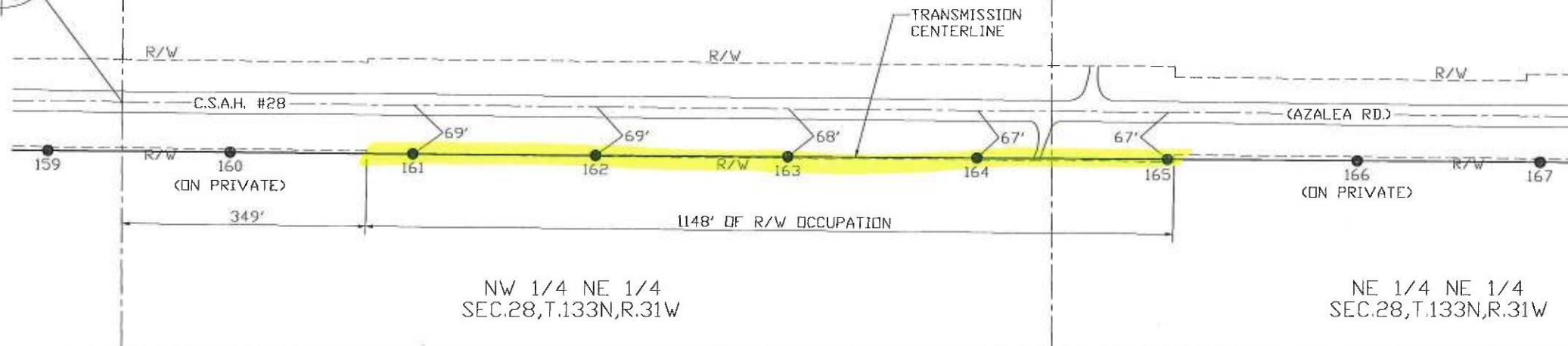


C.S.A.H. #28 R/W OCCUPATION		
GREAT RIVER ENERGY		
WORK ORDER 202972	Part of NE 1/4 Sec. 29, Twp. 133 N., Rng. 31 W. Morrison County, Minnesota	
REVISIONS	DATE	Drawn By: HBN
	8/31/16	DWG. NO. CW-MFT-055A

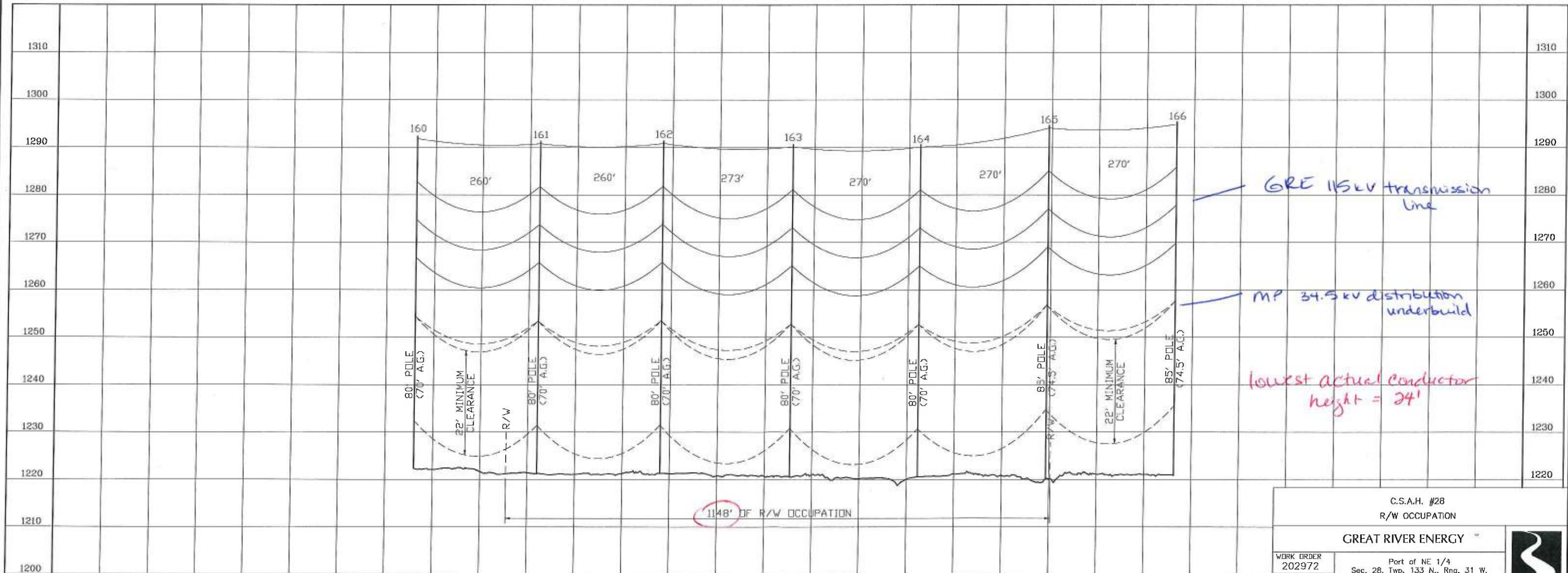


SW 1/4 SE 1/4
SEC.21,T.133N,R.31W

SE 1/4 SE 1/4
SEC.21,T.133N,R.31W

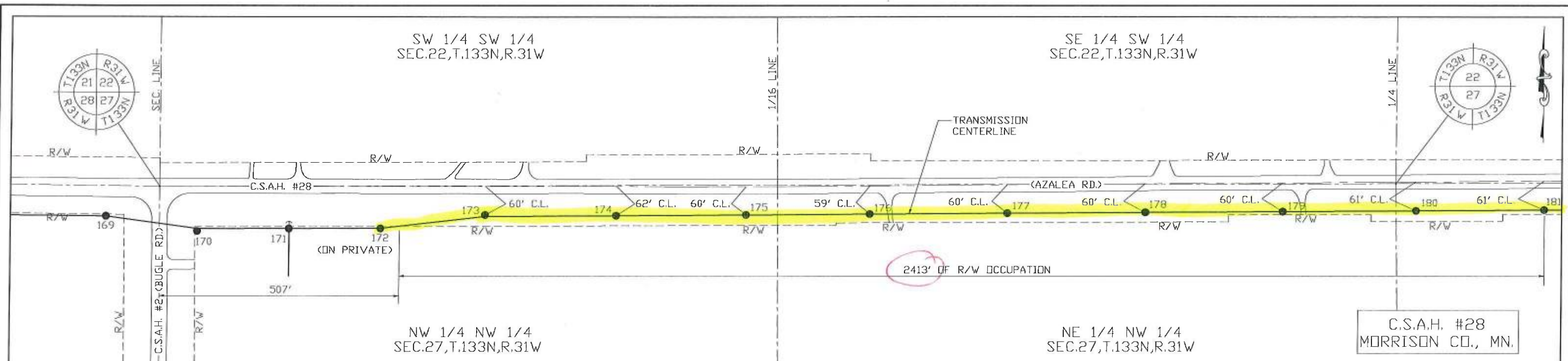


PLAN VIEW: 1"=200'

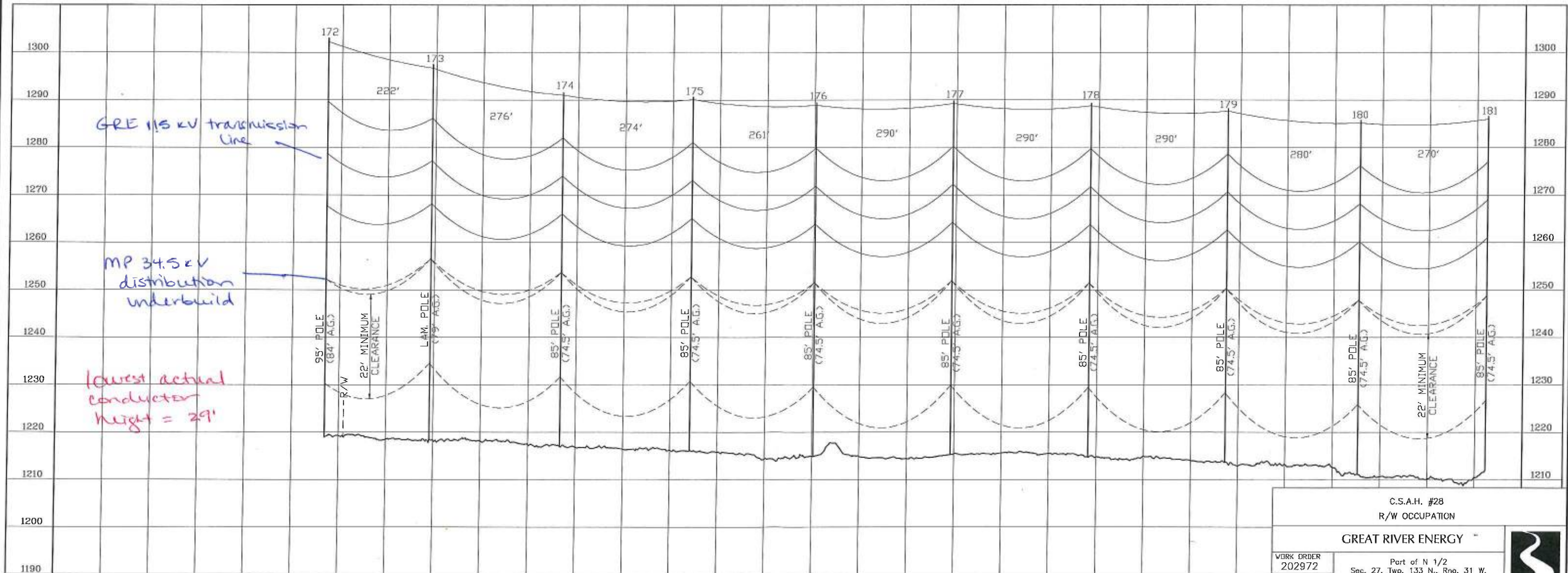


PROFILE VIEW 1"=200' (H)
1"=20' (V)

C.S.A.H. #28 R/W OCCUPATION		
GREAT RIVER ENERGY		
WORK ORDER 202972	Part of NE 1/4 Sec. 28, Twp. 133 N., Rng. 31 W. Morrison County, Minnesota	
REVISIONS	DATE 8/31/16	EXHIBIT A DWG. NO. CW-MFT-055B
		Drawn By: MBN

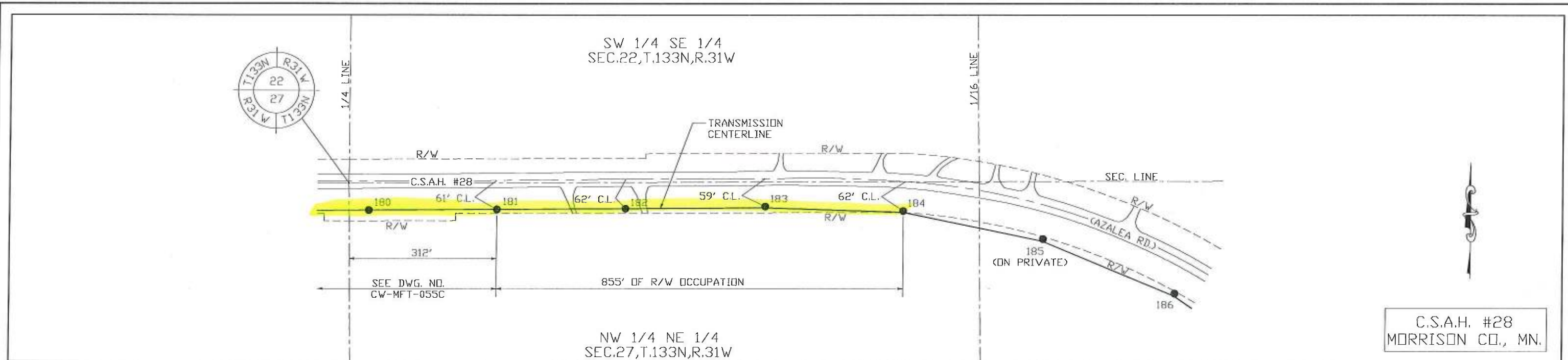


PLAN VIEW: 1"=200'

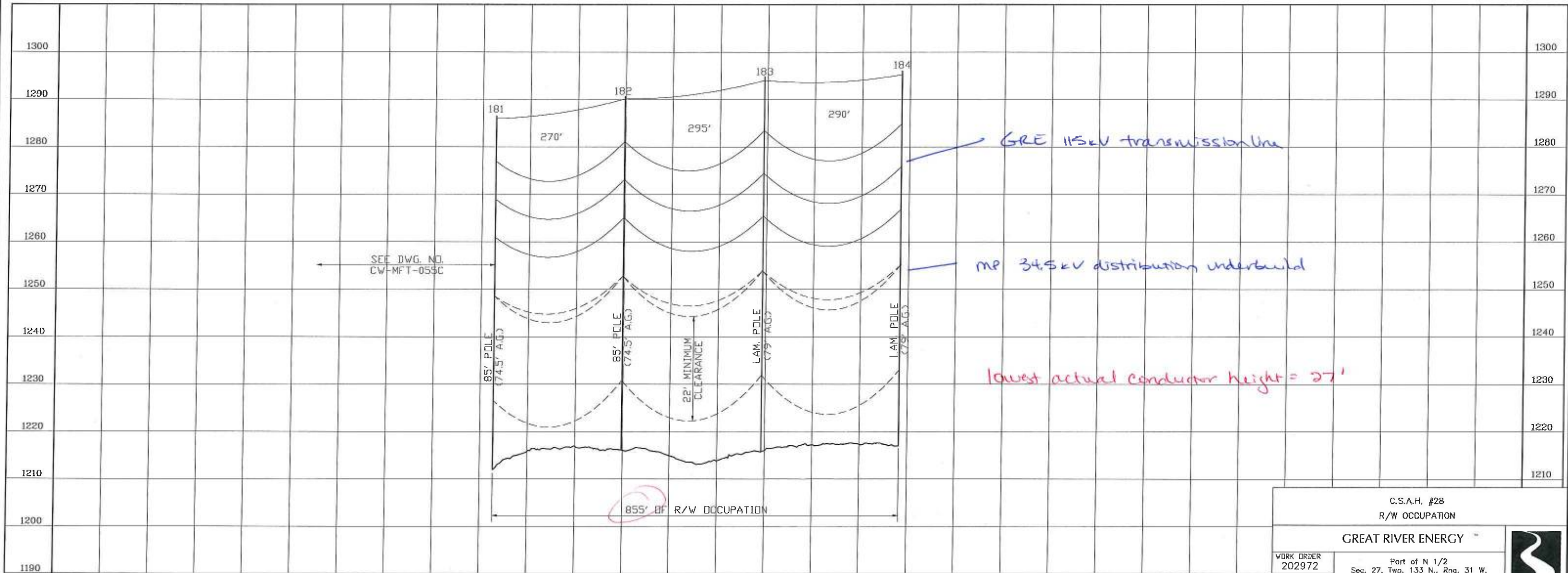


PROFILE VIEW 1"=200' (H)
1"=20' (V)


C.S.A.H. #28 R/W OCCUPATION		
GREAT RIVER ENERGY		
WORK ORDER 202972	Part of N 1/2 Sec. 27, Twp. 133 N., Rng. 31 W. Morrison County, Minnesota	
REVISIONS	DATE 8/31/16	Drawn By: MBN
	EXHIBIT A	DWG. NO. CV-MFT-055C



PLAN VIEW: 1"=200'



PROFILE VIEW 1"=200' (H)
1"=20' (V)

C.S.A.H. #28 R/W OCCUPATION		
GREAT RIVER ENERGY		
WORK ORDER 202972	Part of N 1/2 Sec. 27, Twp. 133 N., Rng. 31 W. Morrison County, Minnesota	
REVISIONS	DATE	Drawn By: MBN
	8/31/16	EXHIBIT A
		DWG. NO. CW-MFT-055D