

Replace 1.9 mile copper cable from Pedestal 1879 to North west merger with HWY 10 For Greyhound Rd total about 3771 feet

PROPOSED CTL COPPER CABLE TO BE PLACED AT 31 FEET FROM C/L AT 36 INCHED DEEP

EXISTING CTL COPPER CABLE TO BE LEFT IN PLACE /NOT IN USE

20' from Center Line to CTL copper cable

Existing Meter at 32' from Center Line

MORRISON COUNTY PERMIT APPLICATION
CENTURYLINK PROJECT ID: N.388378
ENGINEER –WEI TAN
PHONE NUMBER-320-292-1753

33' from Center Line to R.O.W.

28' from Center Line to Minnesota power

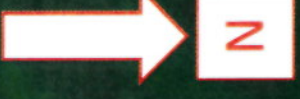
52' from R.O.W. to Center Line of Rail Road

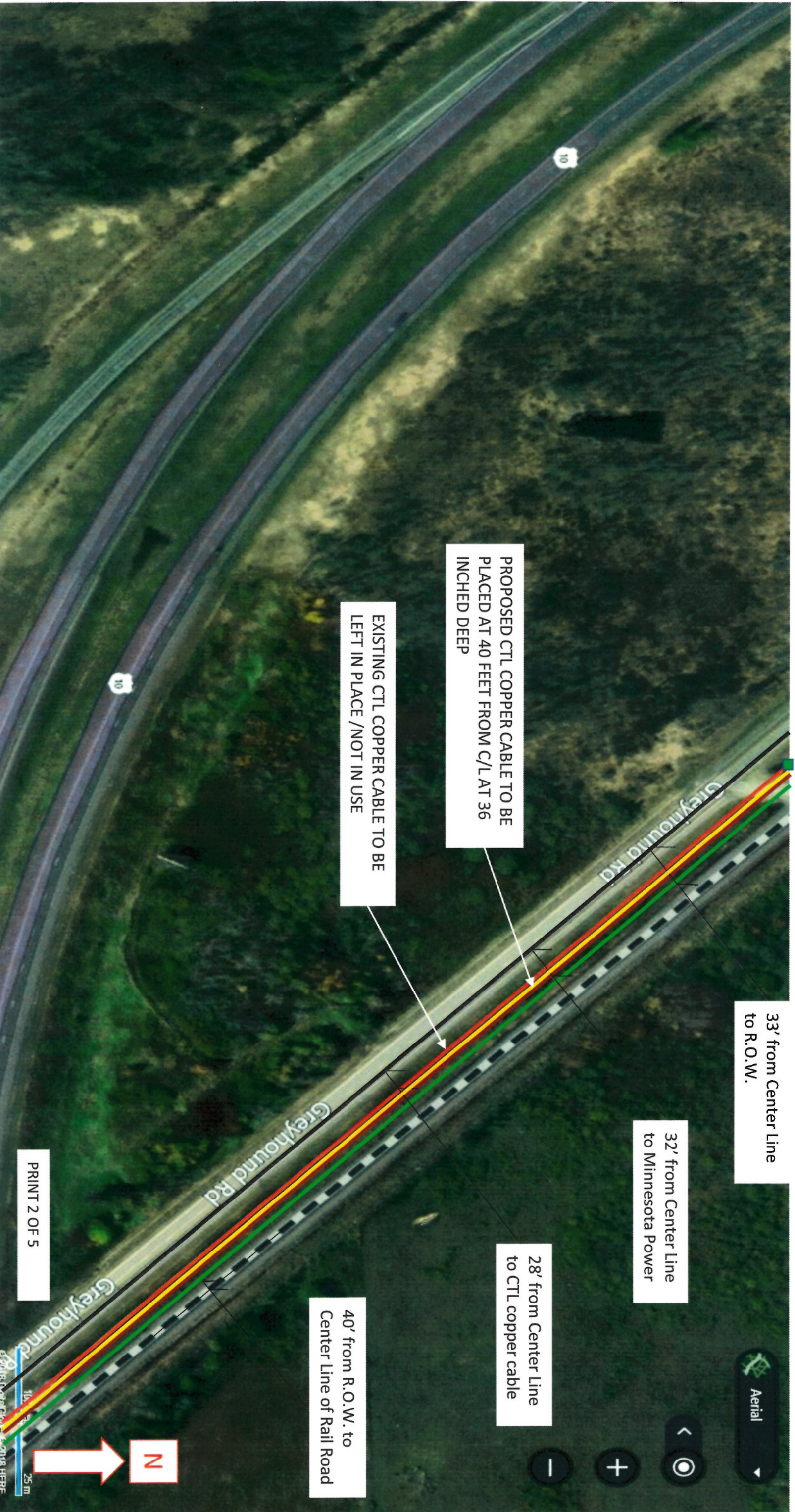
32' from Center Line to CTL copper cable

Cross HWY 10 bridge section Submit for MNDOT permit also

Existing CTL Pedestal #1879 Start Morrison County Permit

PRINT 10F 5





33' from Center Line to R.O.W.

32' from Center Line to Minnesota Power

28' from Center Line to CTL copper cable

40' from R.O.W. to Center Line of Rail Road

PROPOSED CTL COPPER CABLE TO BE PLACED AT 40 FEET FROM C/L AT 36 INCHED DEEP

EXISTING CTL COPPER CABLE TO BE LEFT IN PLACE /NOT IN USE

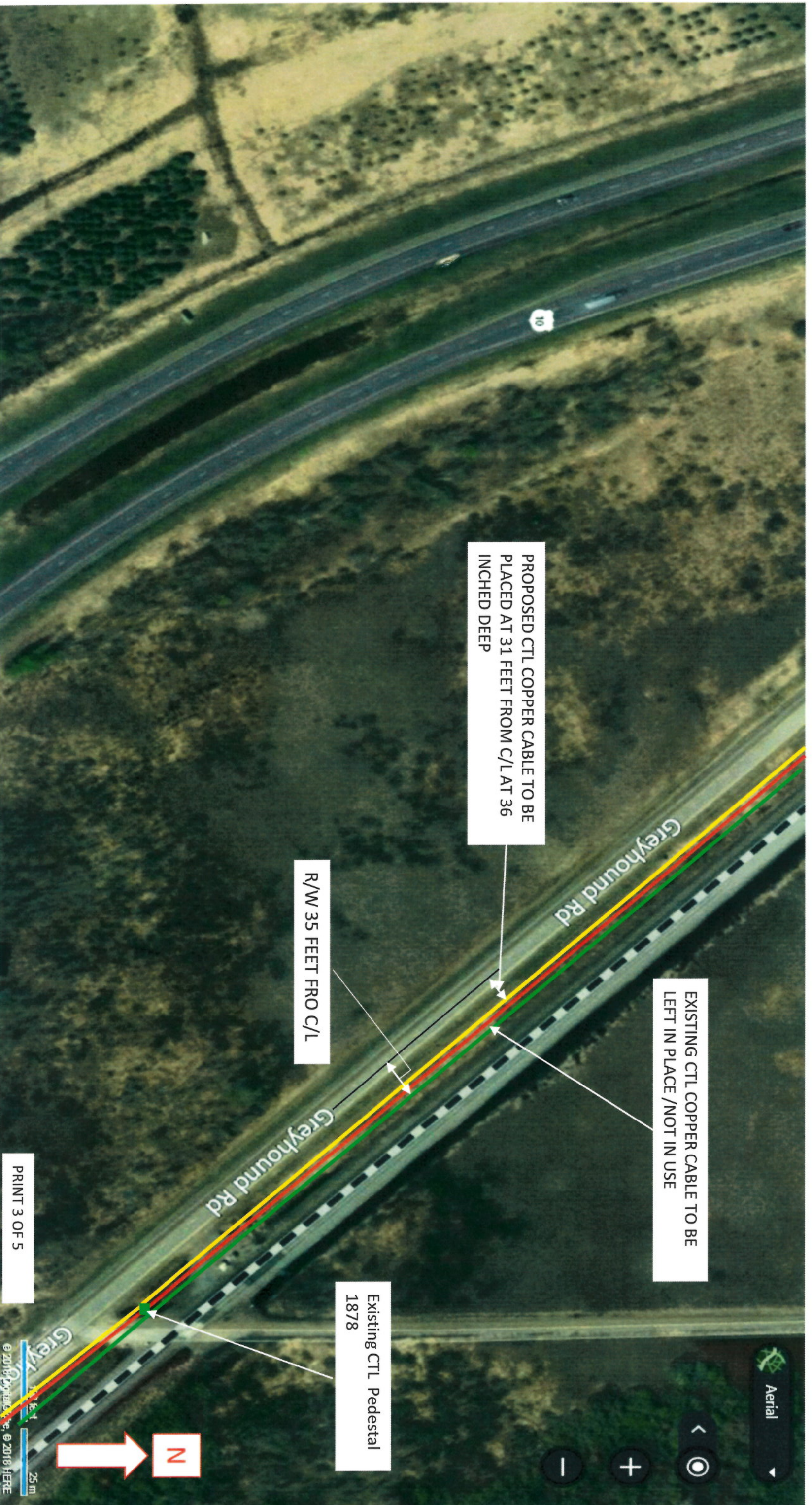
PRINT 2 OF 5



25m

Aerial





PROPOSED CTL COPPER CABLE TO BE PLACED AT 31 FEET FROM C/L AT 36 INCHED DEEP

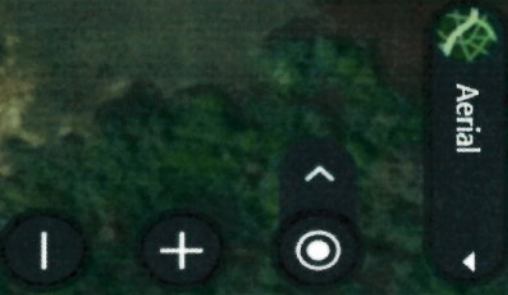
EXISTING CTL COPPER CABLE TO BE LEFT IN PLACE /NOT IN USE

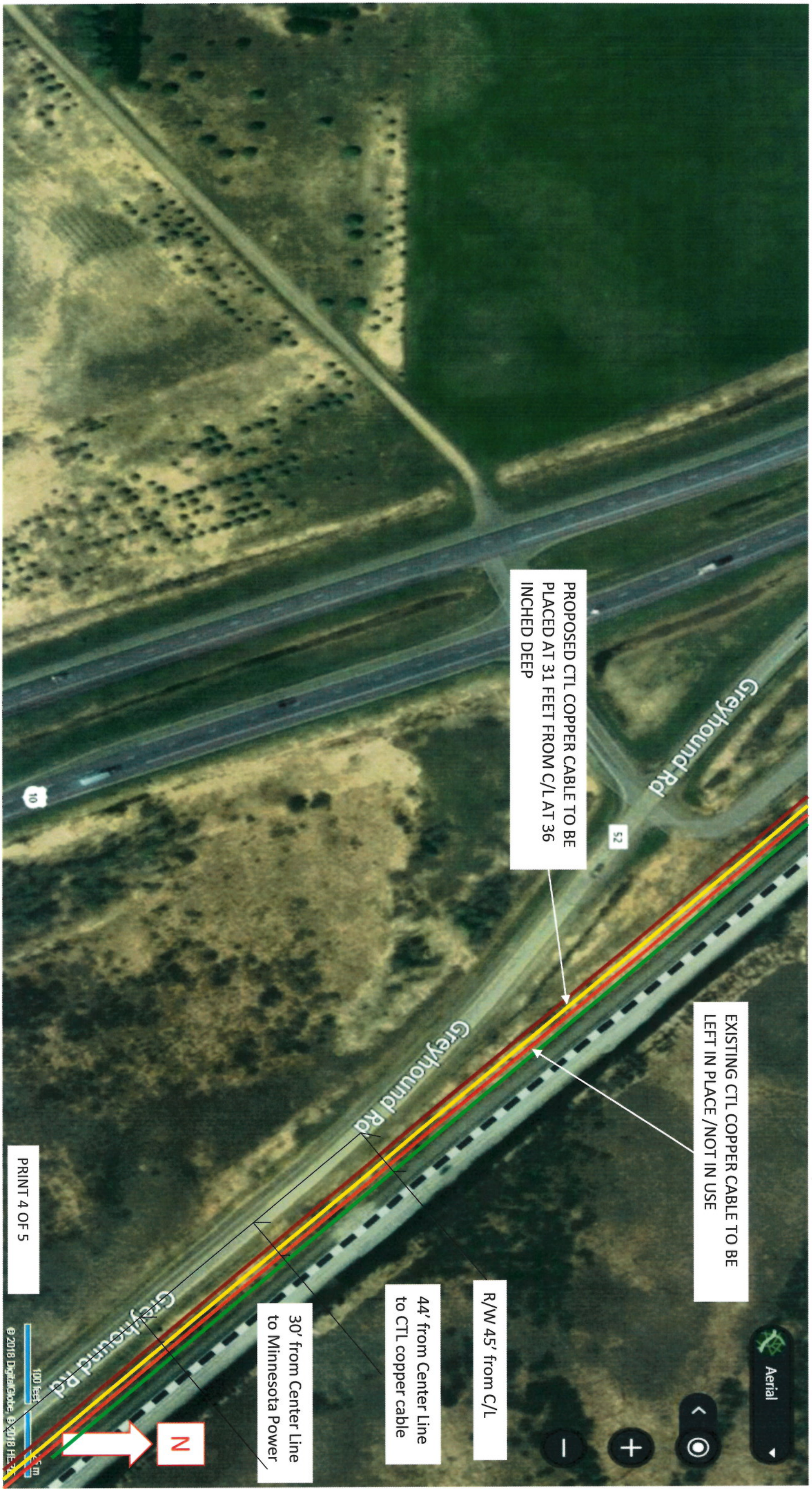
R/W 35 FEET FRO C/L

Existing CTL Pedestal 1878

PRINT 3 OF 5

© 2018 HERE, © 2018 HERE
25 m
31 feet





PROPOSED CTL COPPER CABLE TO BE PLACED AT 31 FEET FROM C/L AT 36 INCHED DEEP

EXISTING CTL COPPER CABLE TO BE LEFT IN PLACE /NOT IN USE

R/W 45' from C/L

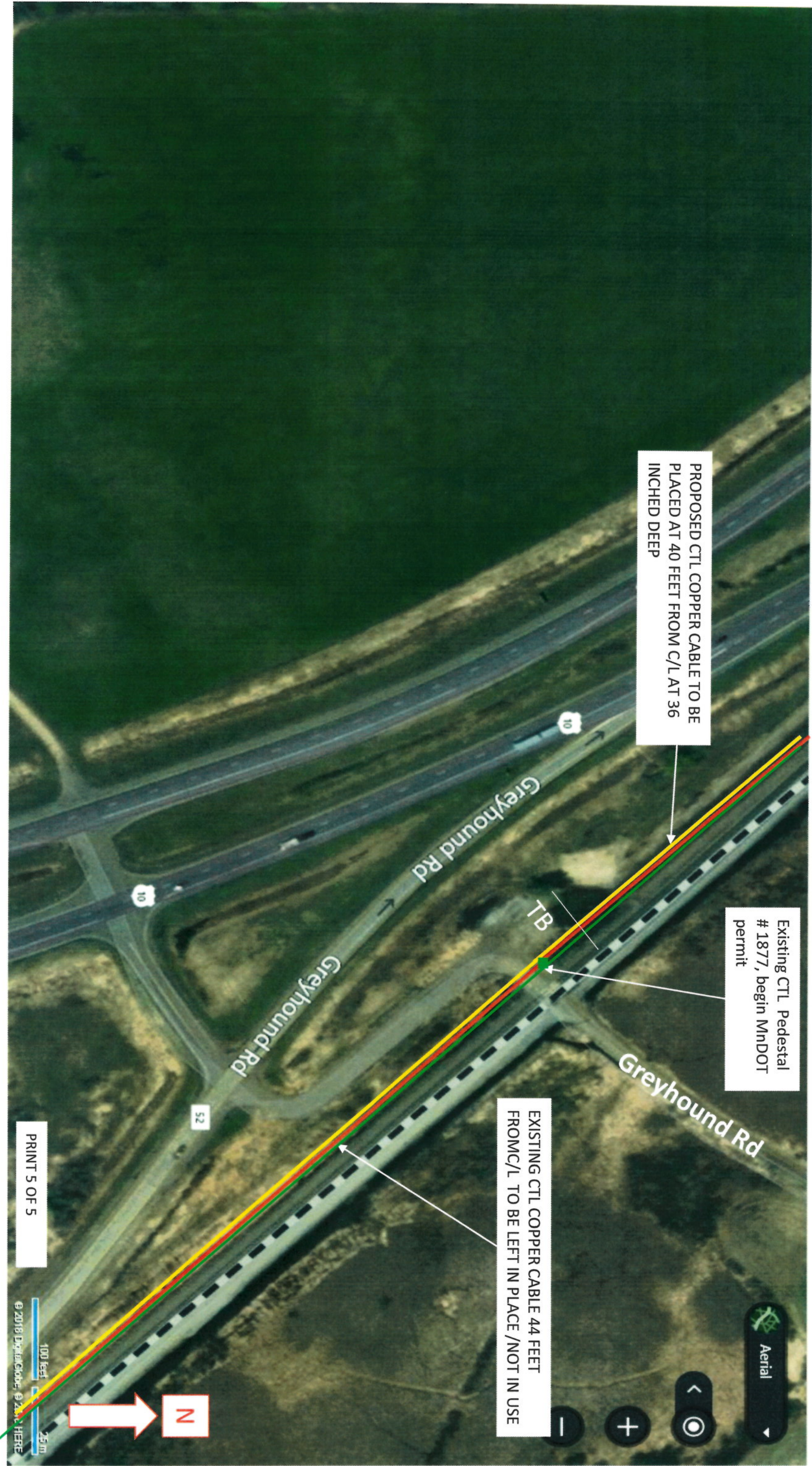
44' from Center Line to CTL copper cable

30' from Center Line to Minnesota Power

PRINT 4 OF 5

100 Feet 30m
© 2018 DigitalGlobe, © 2018 HERE





PROPOSED CTL COPPER CABLE TO BE PLACED AT 40 FEET FROM C/L AT 36 INCHED DEEP

Existing CTL Pedestal # 1877, begin MnDOT permit

EXISTING CTL COPPER CABLE 44 FEET FROM C/L TO BE LEFT IN PLACE /NOT IN USE

PRINT 5 OF 5

© 2018 DigitalGlobe, © 2018 HERE



Aerial

