

CR 242

BASIC WIDTH OF RIGHT OF WAY IS 66 FT.
ALL RIGHT OF WAY OUTSIDE 66 FT.
IS COVERED BY SLOPE EASEMENT.

PI. 78 + 78.4
Δ = 0° 08' 30" L



81 + 30 S. CULV.
INF. 15' X 30" MET. REMOVE
24' X 54' R.C.P. CULV. CL.II + 2 APRONS

86 + 100 FE. ENT.
NO CULV. INF.
15' X 22' R.C.P. CULV. CL.III + 2 APRONS

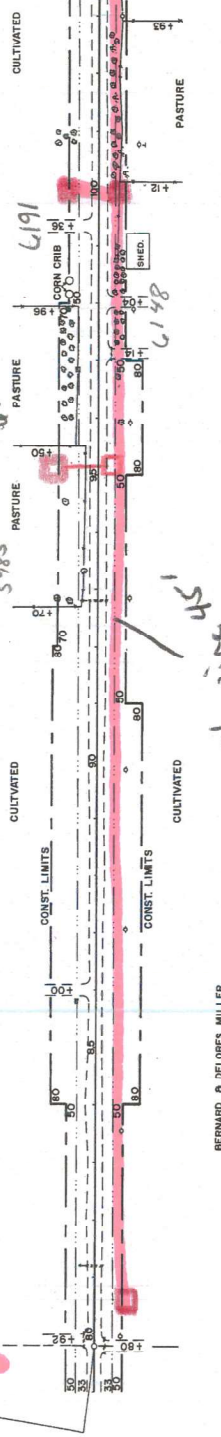
92 + 185 S. CULV.
INF. 15' X 22" MET. REMOVE
24' X 50' R.C.P. CULV. CL.II + 2 APRONS

95 + 38 PM. ENT.
NO CULV. INF.
NO CULV. REQ'D.

BENEDIKT JR. & MARY LOU KASELLA
STA. 92 + 70 TO STA. 106 + 32.6

106 + 32.6 W.P. RD.
NO CULV. INF.
15' X 32' R.C.P. CULV. CL.III + 2 APRONS

PI. 106 + 32.8
Δ = 0° 31' RT



BERNARD & DELORES MILLER
STA. 78 + 78.4 TO STA. 119 + 44

96 + 04 PM. ENT.
NO CULV. INF.
NO CULV. REQ'D.

105 + 56 CEMETERY
INF. 15' X 15" MET. REMOVE
15' X 32' R.C.P. CULV. CL.III + 2 APRONS

106 + 54 W.P. RD.
INF. 15' X 38" MET. REMOVE
15' X 32' R.C.P. CULV. CL.III + 2 APRONS

CL. & BR. 0.00 Δ G

CL. & BR. 2.17

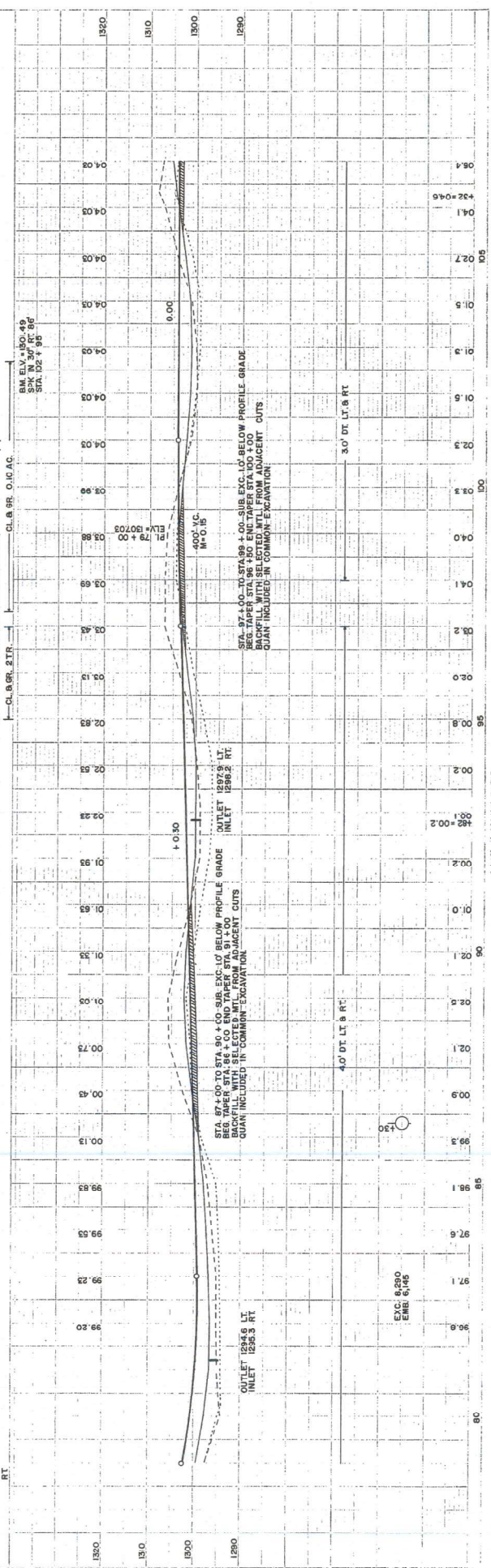
CL. & BR. 0.10 Δ C & S R (TR)

CL. & BR. 0.10 Δ C

CL. & BR. 0.00 Δ G

CL. & BR. 0.00 Δ G

CL. & BR. 0.00 Δ G



40' E

BASIC WIDTH OF RIGHT OF WAY IS 66 FT.
ALL RIGHT OF WAY OUTSIDE 66 FT.
IS COVERED BY SLOPE EASEMENT.

P.I. 132 + 77.1
 $\Delta = 0^{\circ} 15' RT$

139 + 85 ± CULV.
100' X 36" X 32" MET. REMOVE
50' X 50' RCP. CULV. C.U.I. + 2 APRONS



6812

680' PASTURE

LOW LAND

DAVID A. & BETH A. NEWMAN
STA. 132 + 77.1 TO STA. 145 + 26.0

plowing 45'
from 57'

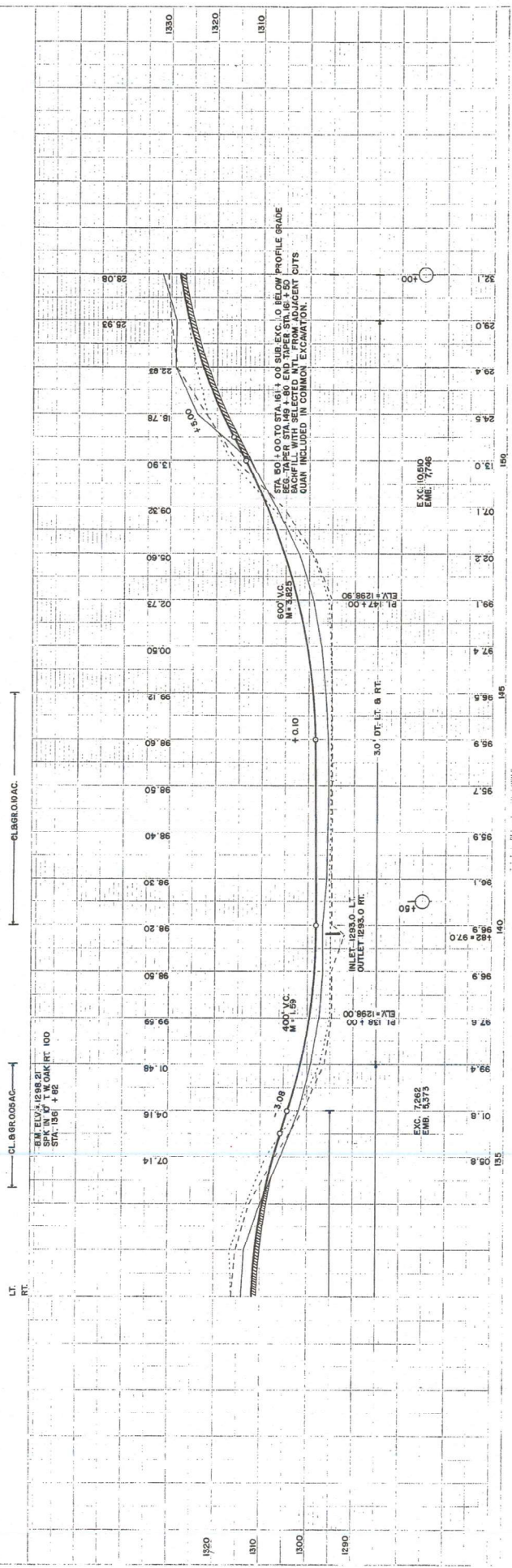
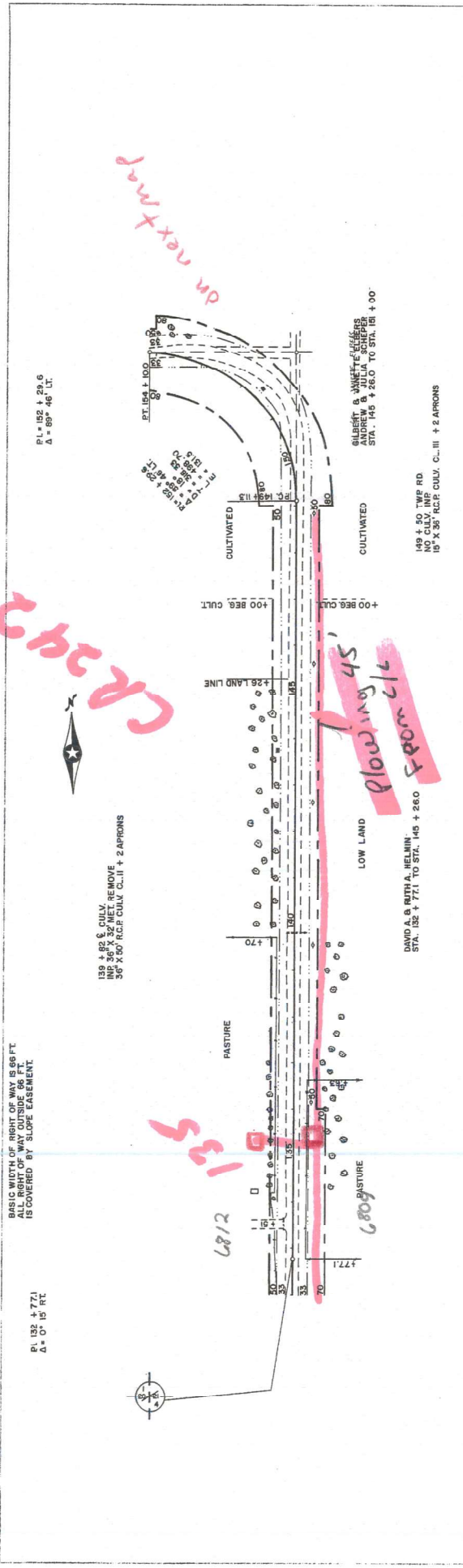
P.I. 152 + 28.6
 $\Delta = 89^{\circ} 46' LT$

P.I. 152 + 28.6
 $\Delta = 89^{\circ} 46' LT$

DR next map

BLANCKE & WHEAT - FIELDS
ANDREW & JULIA SCHEPPE
STA. 145 + 26.0 TO STA. 151 + 00

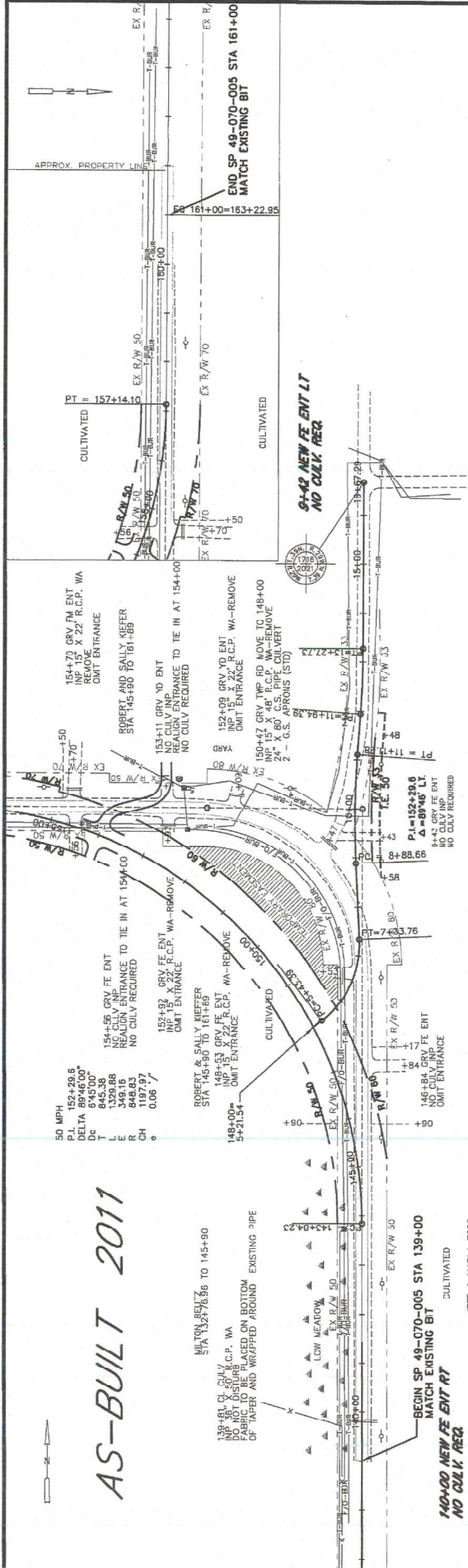
149 + 50 TRIP RD.
NO CULV. INF.
15' X 36" RCP. CULV. C... III + 2 APRONS



On next map
 2424242424

6
 SF

AS-BUILT 2011



1340	1330	1320	1310	1300	1290	1280	1270	1260	1250	1240	1230	1220	1210	1200	1190	1180	1170	1160	1150	1140	1130	1120	1110	1100	1090	1080	1070	1060	1050	1040	1030	1020	1010	1000	990	980	970	960	950	940	930	920	910	900	890	880	870	860	850	840	830	820	810	800	790	780	770	760	750	740	730	720	710	700	690	680	670	660	650	640	630	620	610	600	590	580	570	560	550	540	530	520	510	500	490	480	470	460	450	440	430	420	410	400	390	380	370	360	350	340	330	320	310	300	290	280	270	260	250	240	230	220	210	200	190	180	170	160	150	140	130	120	110	100	90	80	70	60	50	40	30	20	10	0
1340	1330	1320	1310	1300	1290	1280	1270	1260	1250	1240	1230	1220	1210	1200	1190	1180	1170	1160	1150	1140	1130	1120	1110	1100	1090	1080	1070	1060	1050	1040	1030	1020	1010	1000	990	980	970	960	950	940	930	920	910	900	890	880	870	860	850	840	830	820	810	800	790	780	770	760	750	740	730	720	710	700	690	680	670	660	650	640	630	620	610	600	590	580	570	560	550	540	530	520	510	500	490	480	470	460	450	440	430	420	410	400	390	380	370	360	350	340	330	320	310	300	290	280	270	260	250	240	230	220	210	200	190	180	170	160	150	140	130	120	110	100	90	80	70	60	50	40	30	20	10	0

8059

CR 242

SITE

BASIC WIDTH OF RIGHT OF WAY IS 66 FT.
CULVERT SIDES OF 66 FT.
IS COVERED BY SLOPE EASEMENT.

151 ± TO ENT.
NO CULV. INP.
15' X 22' R.C.P. CULV. CL. III ± 2 APRONS
JOHN E. KIEFFER TO STA. 190 ± 42
STA. 177 ± 50.6

90 ± 42 P.M. REMOVED
15' X 22' R.C.P. CULV. CL. III ± 2 APRONS
15' X 22' R.C.P. CULV. CL. III ± 2 APRONS

CULTIVATED

CONST. LIMITS

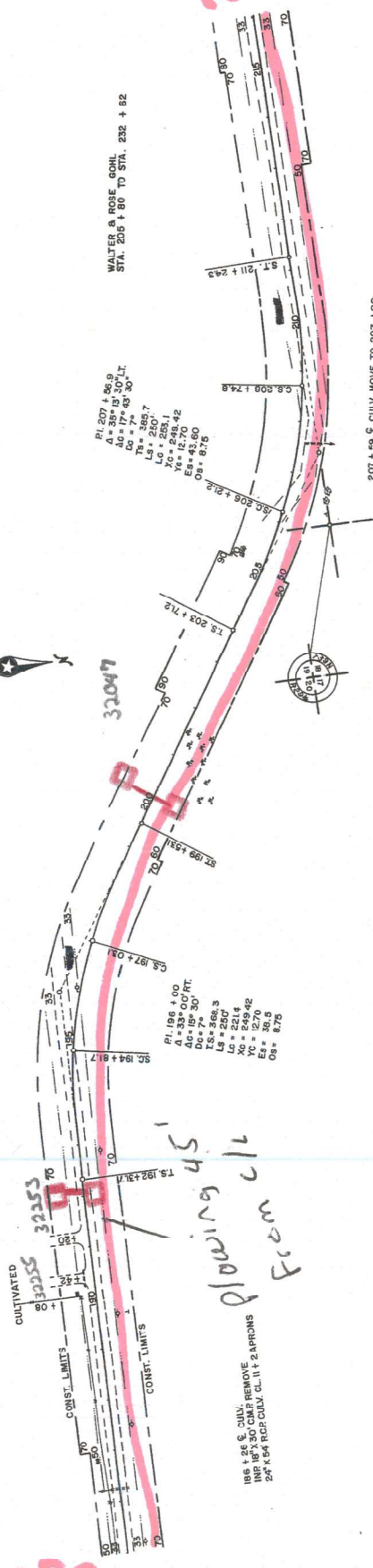
CONST. LIMITS

186 ± 26 ± CULV.
15' X 22' R.C.P. CULV. CL. III ± 2 APRONS
24' X 30' R.C.P. CULV. CL. II ± 2 APRONS

blowing ds
From CL

PI 207 ± 56.8
ΔG = 39° 13' 30" L.
ΔC = 77° 43' 30" A.
Ls = 386.7
Lc = 250.1
Yc = 248.42
Es = 43.70
Os = 87.6

WATER & ROSE CONN.
STA. 207 ± 80 TO STA. 232 ± 52



207 ± 55 ± CULV. MOVE TO 207 ± 00
15' X 22' R.C.P. CULV. CL. III ± 2 APRONS
24' X 30' R.C.P. CULV. CL. II ± 2 APRONS

CL. 8 GR. 3 TR.

TRAFFIC SIGNAL
SPK. IN 5' W. 204
LT (65' STA. 204 ± 75)

