

County line

PL 0+00
A 9' 53" RT

BASIC WIDTH OF RIGHT OF WAY IS 66 FT.
MINIMUM WIDTH OF SHOULDER 6 FT.
IS COVERED BY STONE EASEMENT

FRANCIS & BEVERLY MILLERSBURG
STA. 0+00 TO STA. 39+79.2

1672

Q229

5400'
1 crossing

Burying cable on
the west side of Co29
45' from c/l

PT 28+300

28+38 PAST ENT.
NO. 40' X 32' CAP REMOVE
18" X 24" CONC. CULV. CL III
2 CONC. APRONS

PT 13+827
18' X 48' X 32' CAP REMOVE
18" X 24" CONC. CULV. CL III
2 CONC. APRONS
TRAVEL ADICED
2014

EQ 271+11.9=0+00
BENTON COUNTY
MORRISON COUNTY

REG. PROJ. SUP-49-63-01
STA. 0+00

CULTIVATED

FARM YARD

CULTIVATED

LOW PASTURE

OPEN PASTURE

0.4+44 PAST ENT.
NO. 36" X 48" CONC. CULV. CL III
2 CONC. APRONS

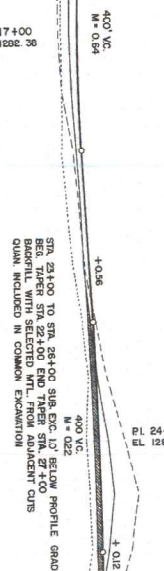
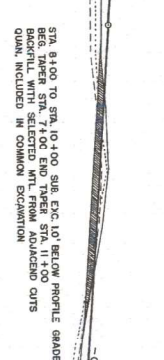
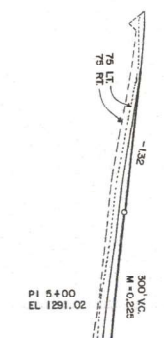
ROBERT J. & MARIE FUSBY
STA. 0+00 TO STA. 13+27

LOUISE & KATHERINE ZILLEGEN
FROM STA. 13+27 TO STA. 54+114

B.M. ELEV 1292.86
SPK. IN 4" W. OAK
RT. 160' STA. 2+18

B.M. ELEV 1288.08
SPK. IN 3" ASH
RT. 250' STA. 12+30

B.M. ELEV 1298.88
NO. 6" X 6" W. OAK
LT. 350' STA. 24+00



Profile view showing elevations and stationing from 1270 to 1310. The table lists elevations at various stations and includes notes about excavation and embankment.

1310	94.7
	96.0
	113.0 66.0
	+70 96.5
	96.9
	97.0
1290	97.0
	108.9 97.0
	97.1
	97.1
	96.3
	94.3
	92.7
	91.2
	89.8
	88.7
	88.5
	89.2
	89.6
	88.3
	86.2
	84.6
	83.2
	82.5
	82.3
	82.3
	81.7
	81.3
	81.8
	82.4
	83.0
	83.5
	84.6
	85.9
	87.6
	88.6
	87.7
	88

EXC. 1811
EMB. 1598

EXC. 2000
EMB. 1877

EXC. 3051
EMB. 1653

EXC. 4662
EMB. 2081

SUP-49-63-01

CSAH 29

FROM SOUTH CO. LINE TO CSAH-26

SHEET 3 OF 9 SHEETS

2 of 2
 6239

POT 26+50.7

BASIC WIDTH OF RIGHT OF WAY IS 66 FT.
 FROM CENTERLINE TO ADJACENT PROPERTY
 IS COVERED BY SLOPE EASEMENT

FRANCIS & BEVERLY ELLERBUND
 STA. 0+00 TO STA. 35+79.2

PI=139.792
 Δ = 0° 21' LT

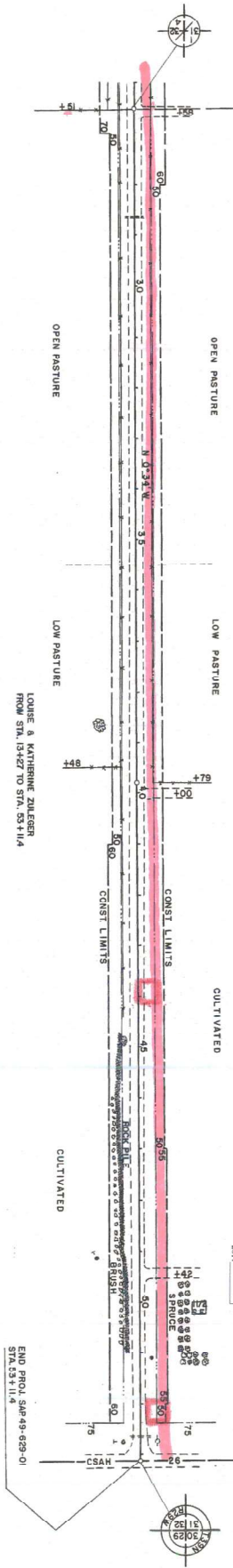


28+68.1
 18" DIA. CONC. PIPE REMOVE
 36" X 44" CONC. CULV. CL.III
 2 CONC. APRONS

40' 0" DIA. PIPE ENT.
 18" X 18" CONC. CULV. CL.III
 2 CONC. APRONS

48' 4.41' DIA. PIPE ENT.
 NO CULV. INFO
 NO CULV. REQ'D.

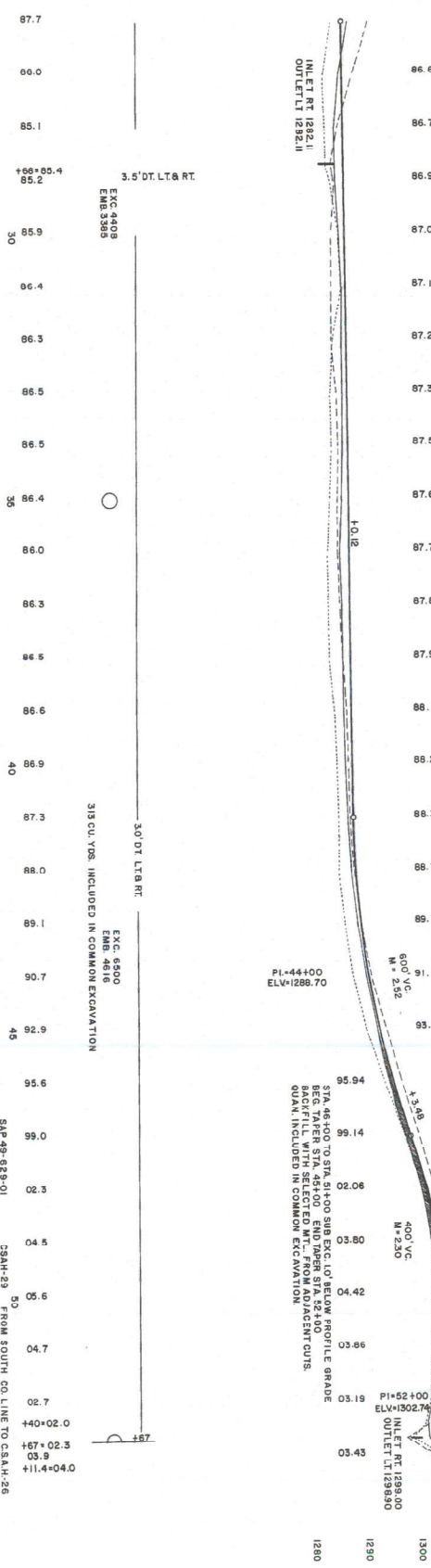
NOTE: STA. 52+42.7
 REMOVE ALL ITEM SICH 501 INCLUDES REMOVAL OF APRONS AS
 5 LIN. FT. OF PIPE
 INSTALL ALL ITEM 2201, S71 COVERS REPLACING OF APRONS
 AS 5 LIN. FT. OF PIPE
 REMOVE APRONS (REMOVE APRONS ONLY)
 18" X 18" CONC. CULV. CL.III
 18" X 14" MET. PIPE CULV. LT.
 REMOVE APRONS - EXTEND PIPE & REPAIR APRONS.
 TAPES ADDED
 2011



BM. ELY 1298.12
 3PM, IN 24" OAK
 FT. 170' STA. 384+33

BM. ELY 1300.45
 3PM, IN 24" OAK
 FT. 53' (S/N) 1709+22 ON CASH-26

1310
 1300
 1290
 1280



87.7
 85.2
 85.1
 85.0
 84.9
 84.8
 84.7
 84.6
 84.5
 84.4
 84.3
 84.2
 84.1
 84.0
 83.9
 83.8
 83.7
 83.6
 83.5
 83.4
 83.3
 83.2
 83.1
 83.0
 82.9
 82.8
 82.7
 82.6
 82.5
 82.4
 82.3
 82.2
 82.1
 82.0

1320
 1310
 1300
 1290
 1280

EXC. 4439
 EMB. 3395

EXC. 6500
 EMB. 4816

SAP 49-529-01

CSAH-29
 FROM SOUTH CO. LINE TO CSAH-26

SHEET 4 OF 5 SHEETS