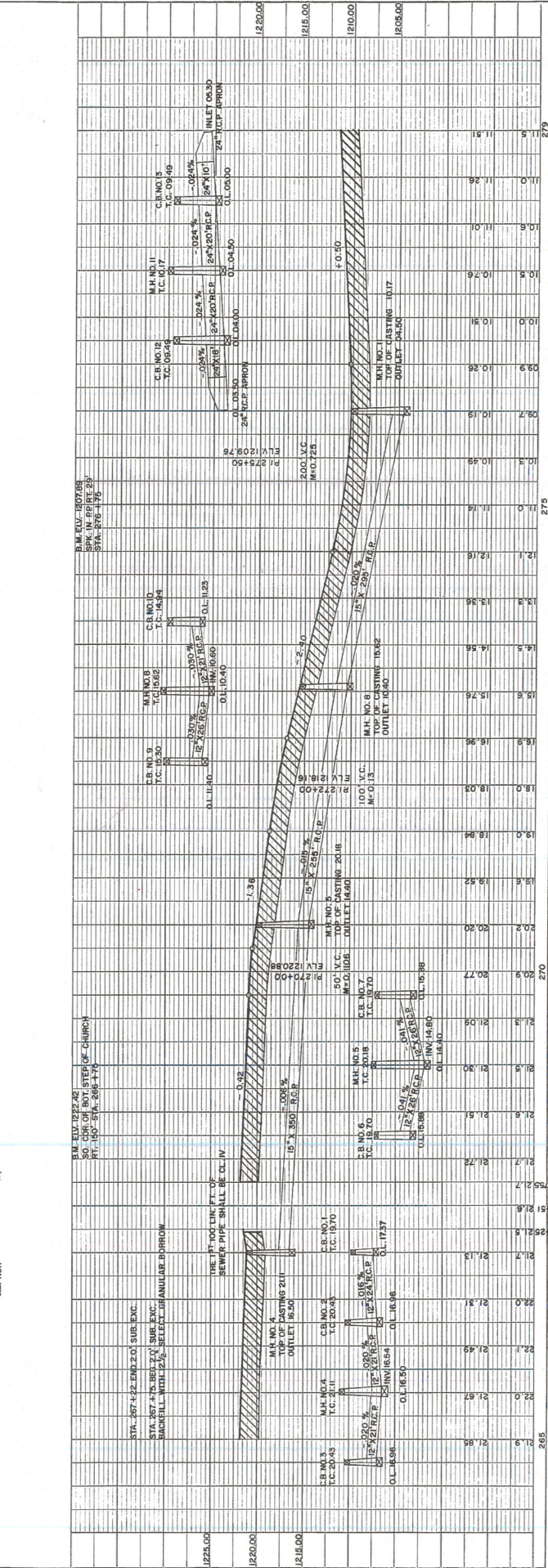
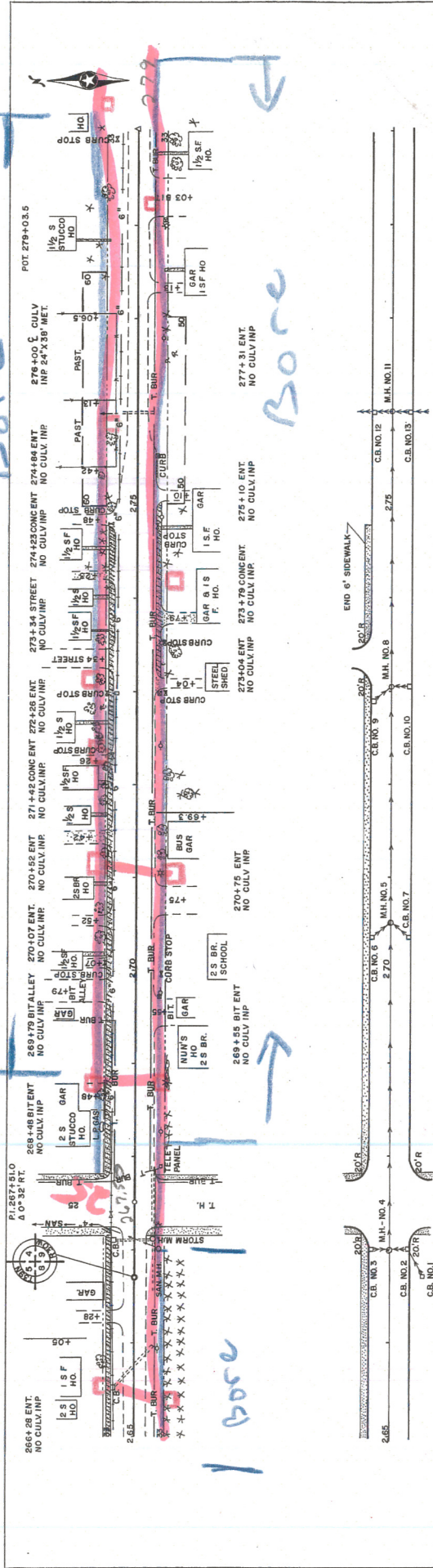


2 of 12
6.5 miles

Back main

Q234
Bore



DATE	REVISION

DATE	REVISION

4 of 12

CR34

STA 314.93 PM LIT
IMP 12.20 CM CMC REMOVE
F&B 15.25 CM CMC
F&B 2.15 W/PROPS

STA 316.22 PM LIT
IMP 12.20 CM CMC REMOVE
F&B 15.25 CM CMC
F&B 2.15 W/PROPS

STA 304.21 PM LIT
IMP 12.20 CM CMC REMOVE
F&B 15.25 CM CMC
F&B 2.15 W/PROPS

STA 304.37 PM LIT
IMP 12.20 CM CMC REMOVE
F&B 15.25 CM CMC
F&B 2.15 W/PROPS

BM EL. 1240.76
PC 301.27
PC 301.94
PC 302.61

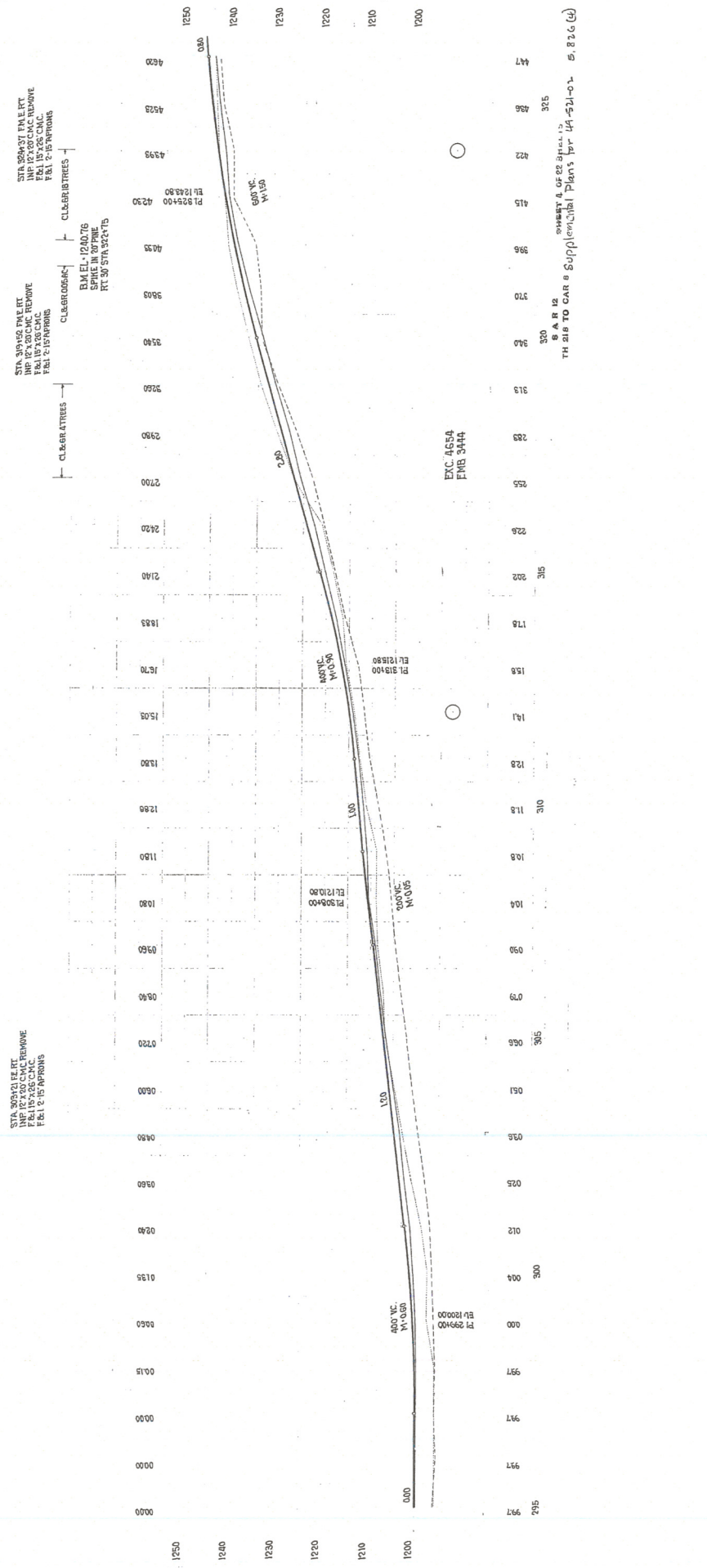
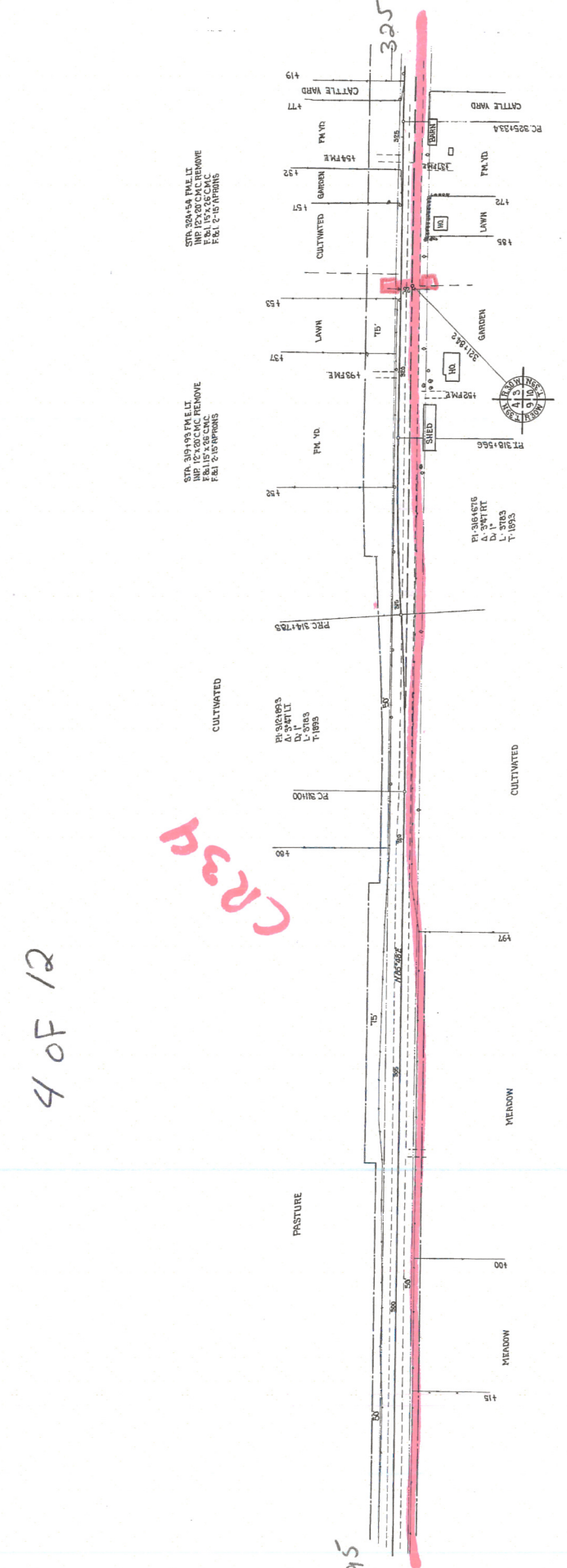
EL. 1245.80
PC 303.28
PC 303.95
PC 304.62

EL. 1215.80
PC 305.00
PC 305.67
PC 306.34

EL. 1205.80
PC 307.00
PC 307.67
PC 308.34

EL. 1200.00
PC 309.00
PC 309.67
PC 310.34

EL. 1200.00
PC 311.00
PC 311.67
PC 312.34



8 A R 12
SHEET 4 OF 28 SHEETS
THIS IS TO CARB Supplemental Plans for 14-521-0-1 S. 826 (L)

E.C. 4654
P.W. 5444

5 OF 12

CR 39



STA 3848+00 P.M.E. LT
NO CULV. IMPL. IN PLACE
F&I 12'x26' CMC
F&I 2'x36" APPROX.

CULTIVATED

FT 333+000

P1 331+004
Δ 2'56" LT
L-3833

119

196

196

196

196

196

196

196

196

196

196

196

196

196

196

196

196

196

196

196

196

196

196

196

196

196

196

196

196

196

196

196

196

196

196

196

196

196

196

196

196

196

196

196

196

196

196

196

196

196

196

196

196

196

196

196

196

196

196

196

196

196

196

196

196

196

196

196

196

196

196

196

196

196

196

196

196

196

196

196

196

196

196

196

196

196

196

196

196

196

196

196

196

196

196

196

196

196

196

196

196

196

196

196

196

196

196

196

196

196

196

196

196

196

196

196

196

196

196

196

196

196

196

196

196

196

196

196

196

196

196

196

196

196

196

196

196

196

196

196

196

196

196

196

196

196

196

196

196

196

196

196

196

196

196

196

196

196

196

196

196

196

196

196

196

196

196

196

196

196

196

196

196

196

196

196

196

196

196

196

196

196

196

196

196

196

196

196

196

196

196

196

196

196

196

196

196

196

196

196

196

196

196

196

196

196

196

196

196

196

196

196

196

196

196

196

196

196

196

196

196

196

196

196

196

196

196

196

196

196

196

196

196

196

196

196

196

196

196

196

196

196

196

196

196

196

196

196

196

196

196

196

196

196

196

196

196

196

196

196

196

196

196

196

196

196

196

196

196

196

196

196

196

196

196

196

196

196

196

196

196

196

196

196

196

196

196

196

196

196

196

196

196

196

196

196

196

196

196

196

196

196

196

196

196

196

196

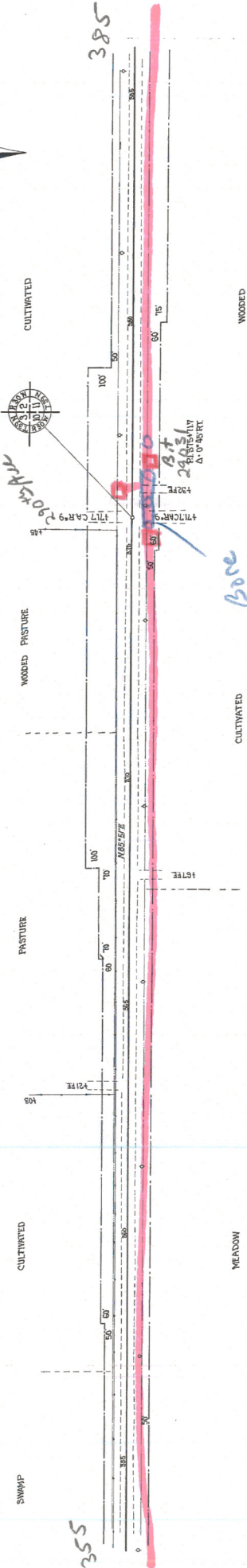
196

6 of 12

CR-34

STA 362+01.51
IMP 24" X 6" CONC REMOVE
F&I 24" ASPHALT
F&I 24" ASPHALT

STA 375+11 CAR LT
IMP 24" X 6" CONC REMOVE
F&I 18" X 30" S&P
F&I 24" ASPHALT



STA 367+51.55 FT
NO CULV. IMPL. REQ.
NO CULV. REQUIRED

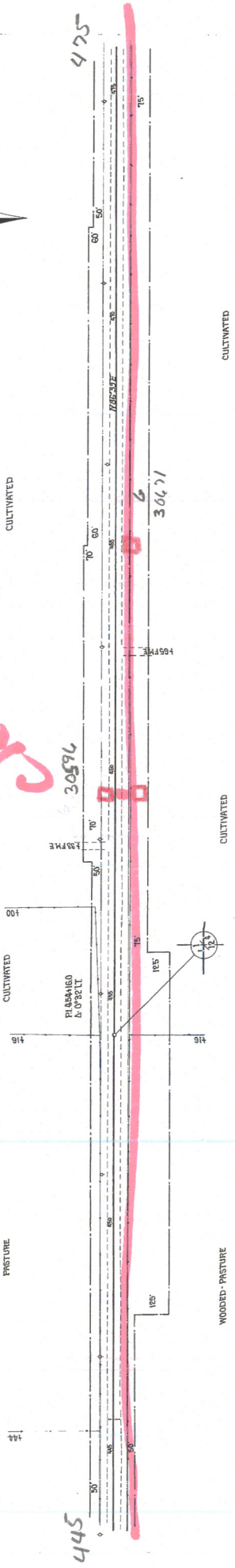
STA 374+51.55 FT
IMP 24" X 6" CONC REMOVE
F&I 18" X 30" S&P
F&I 24" ASPHALT



9 of 12

STA. 455+35 P.M.E. LIT.
TOP OF CURB 1.00' ABOVE
FIN. 15' 2.85' C.M.C.
F&I 2-15' APPROX.

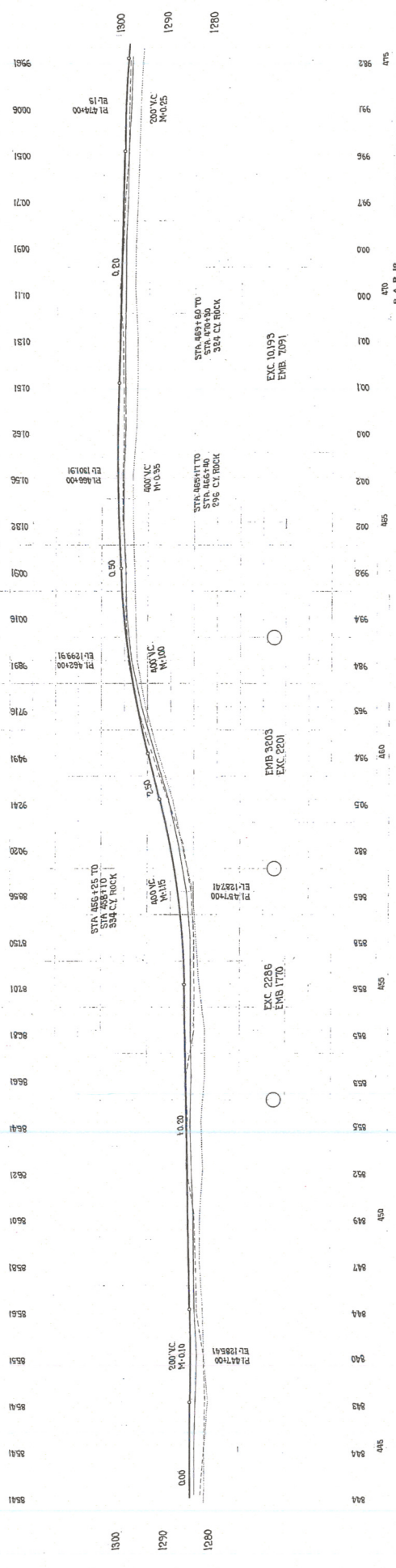
CR 304



STA. 455+05 P.M.E. LIT.
TOP OF CURB 1.00' ABOVE
FIN. 15' 2.85' C.M.C.
F&I 2-15' APPROX.

CL. & GR. TYPIC

CL. & GR. TYPIC



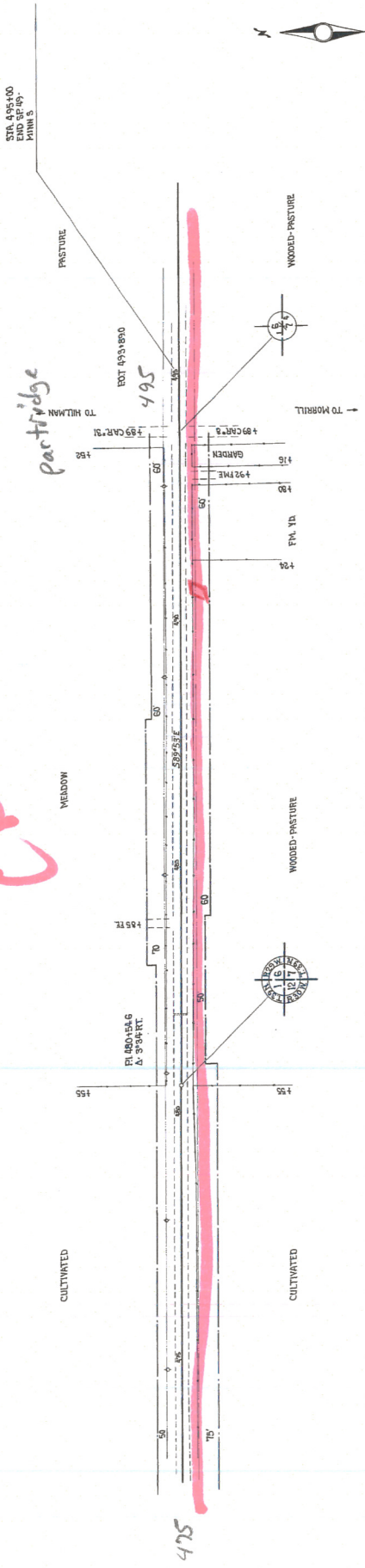
SHEET 9 OF 22 SHEETS
S.A.R. 12
TH. 210 TO CAR 8 Supplemental Plots For 44-521(02- S. 874)

10 OF 12

423A

STA 482+00
IND 12" CONC. REMOVE
F&I 2'-0" APRONS
F&I 2'-0" APRONS

STA 482+00
IND 12" CONC. REMOVE
F&I 2'-0" APRONS
F&I 2'-0" APRONS

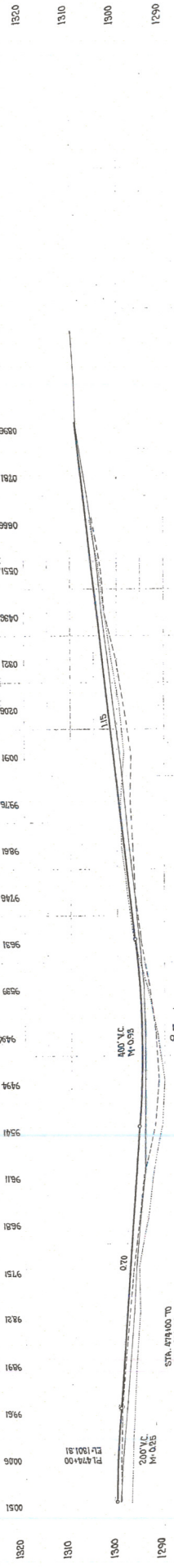


STA 482+00
IND 12" CONC. REMOVE
F&I 2'-0" APRONS
F&I 2'-0" APRONS

STA 482+00
IND 12" CONC. REMOVE
F&I 2'-0" APRONS
F&I 2'-0" APRONS

BM 1193+85
AT STA 483+00

BM 1193+85
AT STA 483+00



11 of 12
1 mile East of 37 on 34 3/1998

Handwritten notes:
495
31998

BASIC WIDTH OF RIGHT OF WAY IS 66 FT.
ALL RIGHT OF WAY OUTSIDE 66 FT. IS
COVERED BY SLOPE EASEMENT

PL 494+890
Δ 0° 05' RT.

494+890 CSAH 37 LT.
INP 18" X 42" CMP. B & 2 APRONS
DO NOT DISTURB
REQ. SAP 48-654-03
STA. 494+890

PASTURE

CONST. LIMITS

PASTURE

PASTURE

PASTURE

PASTURE

PASTURE

PASTURE

HAY MEADOW

518+22
INP 18" X 36" CMP. REM.
F.B.I. 24" X 62" CMP.
F.B.I. 2 APRONS

521+78 FE. ENT. LT.
NO CULV. INP.
INP 12" X 16" CMP. REM.
F.B.I. 15" X 22" R.C.P. CL. III
L = 340'
T = 170'

511+72 FE. ENT. LT.
NO CULV. INP.
INP 15" X 22" R.C.P. CL. III
F.B.I. 2 APRONS

508+82
INP 24" X 36" CMP. REM.
F.B.I. 30" X 58" CMP.
F.B.I. 2 APRONS

511+77 FE. ENT. RT.
INP 12" X 16" CMP. REM.
F.B.I. 15" X 22" R.C.P. CL. III
F.B.I. 2 APRONS

504+58 FE. ENT. RT.
INP 12" X 24" CMP. REM.
F.B.I. 15" X 22" R.C.P. CL. III
F.B.I. 2 APRONS

504+58 FE. ENT. RT.
INP 12" X 24" CMP. REM.
F.B.I. 15" X 22" R.C.P. CL. III
F.B.I. 2 APRONS

504+58 FE. ENT. RT.
INP 12" X 24" CMP. REM.
F.B.I. 15" X 22" R.C.P. CL. III
F.B.I. 2 APRONS

504+58 FE. ENT. RT.
INP 12" X 24" CMP. REM.
F.B.I. 15" X 22" R.C.P. CL. III
F.B.I. 2 APRONS

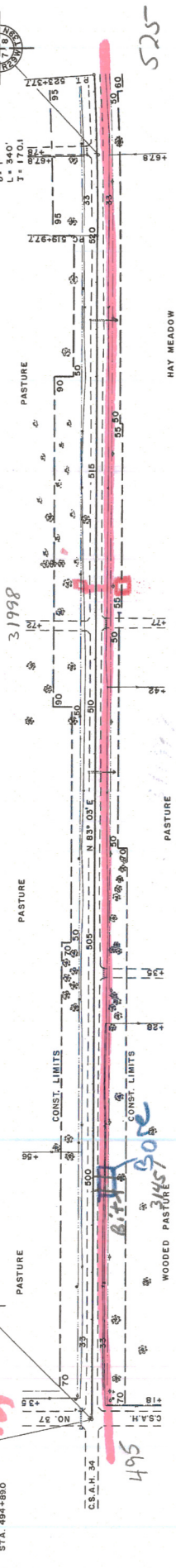
504+58 FE. ENT. RT.
INP 12" X 24" CMP. REM.
F.B.I. 15" X 22" R.C.P. CL. III
F.B.I. 2 APRONS

504+58 FE. ENT. RT.
INP 12" X 24" CMP. REM.
F.B.I. 15" X 22" R.C.P. CL. III
F.B.I. 2 APRONS

504+58 FE. ENT. RT.
INP 12" X 24" CMP. REM.
F.B.I. 15" X 22" R.C.P. CL. III
F.B.I. 2 APRONS

504+58 FE. ENT. RT.
INP 12" X 24" CMP. REM.
F.B.I. 15" X 22" R.C.P. CL. III
F.B.I. 2 APRONS

504+58 FE. ENT. RT.
INP 12" X 24" CMP. REM.
F.B.I. 15" X 22" R.C.P. CL. III
F.B.I. 2 APRONS



494+890 CSAH 37 RT.
NO CULV. INP.
INP 18" X 36" R.C.P. CL. III
F.B.I. 2 APRONS

504+58 FE. ENT. RT.
INP 12" X 24" CMP. REM.
F.B.I. 15" X 22" R.C.P. CL. III
F.B.I. 2 APRONS

504+58 FE. ENT. RT.
INP 12" X 24" CMP. REM.
F.B.I. 15" X 22" R.C.P. CL. III
F.B.I. 2 APRONS

504+58 FE. ENT. RT.
INP 12" X 24" CMP. REM.
F.B.I. 15" X 22" R.C.P. CL. III
F.B.I. 2 APRONS

504+58 FE. ENT. RT.
INP 12" X 24" CMP. REM.
F.B.I. 15" X 22" R.C.P. CL. III
F.B.I. 2 APRONS

504+58 FE. ENT. RT.
INP 12" X 24" CMP. REM.
F.B.I. 15" X 22" R.C.P. CL. III
F.B.I. 2 APRONS

504+58 FE. ENT. RT.
INP 12" X 24" CMP. REM.
F.B.I. 15" X 22" R.C.P. CL. III
F.B.I. 2 APRONS

504+58 FE. ENT. RT.
INP 12" X 24" CMP. REM.
F.B.I. 15" X 22" R.C.P. CL. III
F.B.I. 2 APRONS

504+58 FE. ENT. RT.
INP 12" X 24" CMP. REM.
F.B.I. 15" X 22" R.C.P. CL. III
F.B.I. 2 APRONS

B.M. EL. 1308.03
SPK. IN 10" OAK.
RT. 60 FT. STA. 495+10

CL. & GR. 0.20A

CL. & GR. 0.20A

CL. & GR. 0.20A

CL. & GR. 0.20A

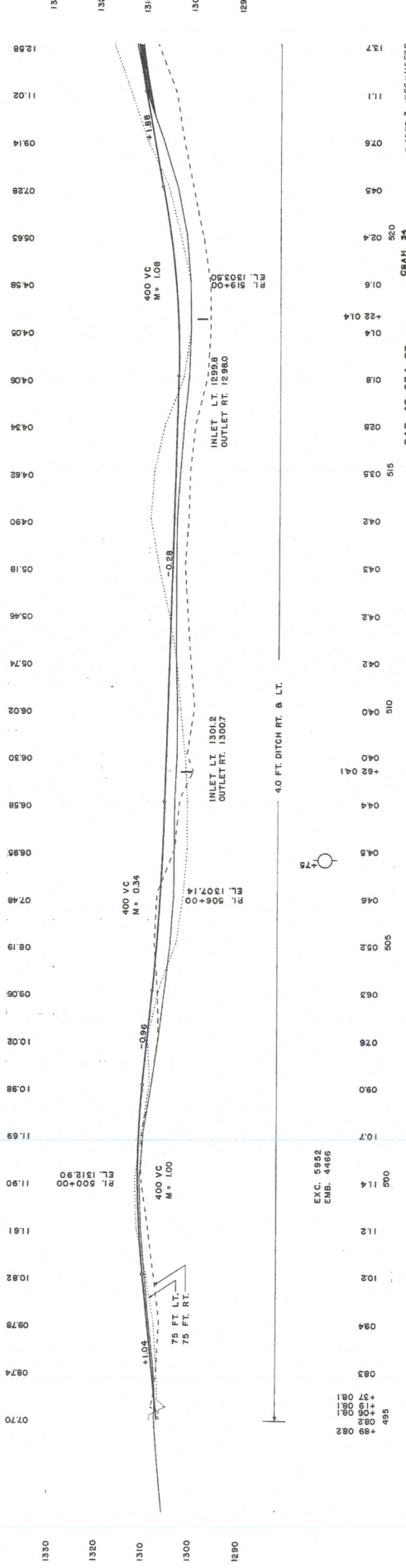
CL. & GR. 0.20A

CL. & GR. 0.20A

CL. & GR. 0.20A

CL. & GR. 0.20A

CL. & GR. 0.20A



EXC. 5982
EMB. 4466

EXC. 5982
EMB. 4466

SAP 49-634-03
CSAH 37 TO CSAH 33
SHEET 3 OF 66 SHEETS

120712

East end of construction

POT. 548-258

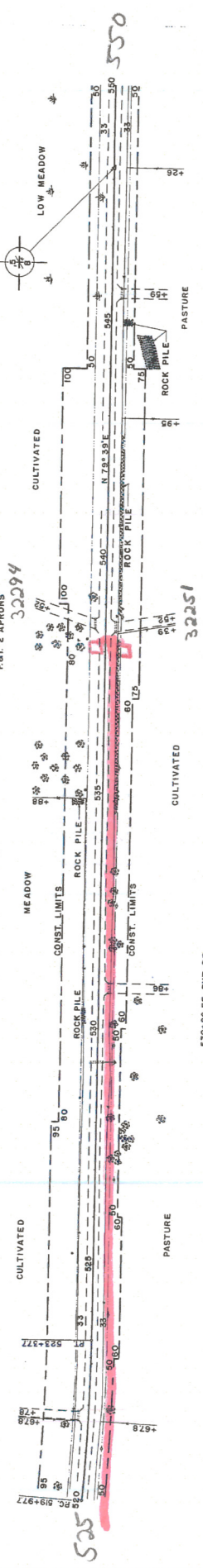
BASIC WIDTH OF RIGHT OF WAY IS 66 FT. COVERED BY SLOPE EASEMENT.

P.I. 521+67.8
Δ = 3° 24' L.T.

529+30 ±
INP 15" X 32" C.M.P. REM.
F.B.I. 2 APRONS

530+55 F.M. ENT. LT.
INP 15" X 32" C.M.P. REM.
F.B.I. 2 APRONS

545+50 PAST ENT. RT.
INP 24" X 14" C.M.P. REM.
F.B.I. 2 APRONS



530+86 F.M. ENT. RT.
INP 15" X 16" C.M.P. REM.
F.B.I. 2 APRONS

538+55 F.M. ENT. RT.
INP 15" X 20" C.M.P. REM.
F.B.I. 2 APRONS

545+50 PAST ENT. RT.
INP 24" X 14" C.M.P. REM.
F.B.I. 2 APRONS



EL. 1314.78
P.I. 525+00

400 VC
M = 126

STA. 525+00 TO STA. 527+00 SUB. EXC. 10 FT. BELOW PROFILE GRADE ENTAPER STA. 527+50 BACKFILL WITH SELECTED MATERIAL. EXISTENT CUTS QUAN. INCLUDED IN CLASS "A" EXCAVATION.

40 FT. DITCH RT. & LT.

(INCL. 188 C.Y. SURF. ROCK) EXC. 18,847
EMB. 14,270

SAP 49-634-03

CSAH 84
CEAH 37 TO CSAH 33

SHEET 4 OF 66 SHEETS