



6
Ext 1 F2.10
Ext 1 G3.3
New 1132 4/0 ACSR
New 1 40 4
New 1 C1.11P
New 1 E1.1
New 1 E3-10
New 1 H1.1
New 1 K1.5
Ret 1104 1/0 ACSR
Ret 1 35-5
Ret 1 C1.11
Ret 1 E1.1
Ret 1 E3-10
Ret 1 H1.1
Ret 1 K1.5

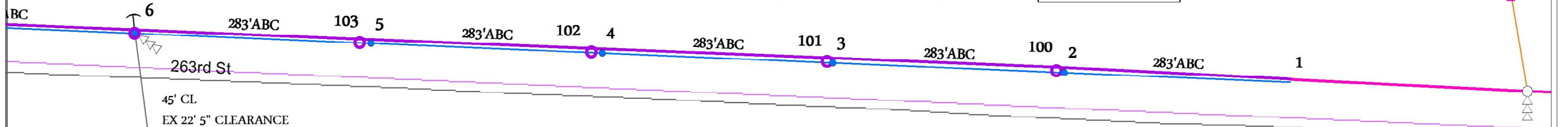
5
New 1132 4/0 ACSR
New 1 40-4
New 1 C1.11P
New 1 H1.1

4
New 1132 4/0 ACSR
New 1 40-4
New 1 C1.11P
New 1 H1.1

3
New 1 35-4
New 1132 4/0 ACSR
New 1 C1.11P
New 1 H1.1

2
New 1132 4/0 ACSR
New 1 45-4 ?
New 1 C1.11P
New 1 H1.1

70-000-01-00306
IRRGTR SECT 1 NW CRNR



103
Ret 1136 1/0 ACSR
Ret 1 35-5
Ret 1 C1.11
Ret 1 H1.1

102
Ret 1156 1/0 ACSR
Ret 1 40-5
Ret 1 C1.11
Ret 1 H1.1

101
Ret 1124 1/0 ACSR
Ret 1 35-5
Ret 1 C1.11
Ret 1 H1.1

100
Ret 1144 1/0 ACSR
Ret 1 40-5
Ret 1 C1.11
Ret 1 H1.1

3Ø LINE TO THE EAST FROM
COUNTY ROAD 45 TO DEAD END POLE
BUILT UNDER WORK ORDER #295217



- 12
- Ext 1 G3.3
- Ext 1 F2.10
- New 1216 4/0 ACSR
- New 1 40-4 SET 8' DEEP
- New 1 C1.11P
- New 1 E1.1
- New 1 E3-10
- New 1 H1.1
- New 1 K1.5
- Ret 1216 1/0 ACSR
- Ret 1 35-5
- Ret 1 C1.11
- Ret 1 E1.1
- Ret 1 E3-10
- Ret 1 H1.1
- Ret 1 K1.5

SET 8' DEEP

- 11
- New 1212 4/0 ACSR
- New 1 40-4
- New 1 C1.11P
- New 1 H1.1
- Ret 1212 1/0 ACSR
- Ret 1 35-5
- Ret 1 C1.11
- Ret 1 H1.1

- 10
- Ext 1 40-5
- Ext 1 G2.1
- Ext 1 S1.01
- Ext 1 A5.21
- Ext 1 E1.1
- Ext 1 F2.8
- Ext 1 H1.1
- Ext 1 OWNER LOOP
- New 1212 4/0 ACSR
- New 1 C1.11P
- New 1 E3-10
- Ret 1212 1/0 ACSR
- Ret 1 C1.11
- Ret 1 E3-10

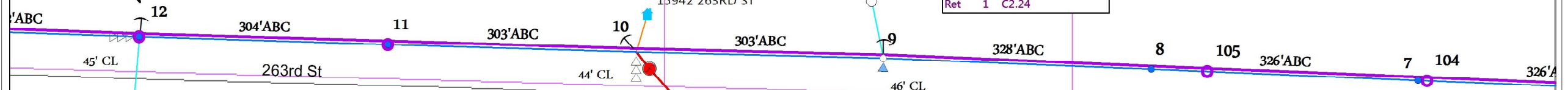
- 9
- Ext 1 G1.7 H9601
- Ext 1 40-4
- Ext 1 E1.1
- Ext 1 E3-10
- Ext 1 F2.8
- Ext 1 H1.1
- Ext 1 K1.5
- New 1312 4/0 ACSR
- New 1 C2.24P
- Ret 1588 1/0 ACSR
- Ret 1 C2.24

- 8
- New 1304 4/0 ACSR
- New 1 50-3 ?
- New 1 C1.11P
- New 1 H1.1

- 7
- New 1304 4/0 ACSR
- New 1 40-4
- New 1 C1.11P
- New 1 H1.1

- 105
- Ret 1076 1/0 ACSR
- Ret 1 45-4
- Ret 1 C1.11
- Ret 1 H1.1

- 104
- Ret 1260 1/0 ACSR
- Ret 1 35-5
- Ret 1 C1.11
- Ret 1 H1.1



70-000-12-01902
IRRIGATION - SO SIDE 263RD ST

70-000-12-01900
15949 263RD ST

70-000-12-01901
SW CORN. OF 263 ST

CURT PLANTE WOULD LIKE 12 POLES
WE CAN LEAVE THEM IN POLE YARD



- 17
- Ext 1 F2.8
- New 1208 4/0 ACSR
- New 1 40-4
- New 2 A5.3
- New 1 C2.24P
- New 2 E1.1
- New 2 E3-10
- New 1 F2.8
- New 1 H1.1
- New 1 S1.01 AØ 15T FUSE SOUTH
- New 1 S1.01 BØ 15T FUSE NORTH
- Ret 1156 1/0 ACSR
- Ret 1 40-5
- Ret 2 A5.3
- Ret 1 C2.24
- Ret 2 E1.1
- Ret 2 E3-10
- Ret 1 F1.8
- Ret 1 H1.1
- Ret 1 S1.01

- 18
- New 1224 4/0 ACSR
- New 1 40-4
- New 1 C2.24P
- New 1 H1.1

RETIRE DOWN GUY
TOWARDS INTERSECTION

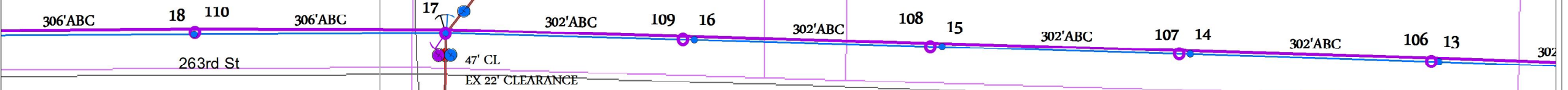
70-000-01-00301
15576 263RD ST

- 16
- New 1 35-4
- New 1208 4/0 ACSR
- New 1 C1.11P
- New 1 H1.1

- 15
- New 1208 4/0 ACSR
- New 1 40-4
- New 1 C1.11P
- New 1 H1.1

- 14
- New 1208 4/0 ACSR
- New 1 40-4
- New 1 C1.11P
- New 1 H1.1

- 13
- New 1208 4/0 ACSR
- New 1 40-4
- New 1 C1.11P
- New 1 H1.1



- 110
- Ret 1216 1/0 ACSR
- Ret 1 40-5
- Ret 1 C2.24
- Ret 1 H1.1

- 109
- Ret 1208 1/0 ACSR
- Ret 1 35-5
- Ret 1 C1.11
- Ret 1 H1.1

- 108
- Ret 1208 1/0 ACSR
- Ret 1 35 5
- Ret 1 C1.11
- Ret 1 H1.1

- 107
- Ret 1228 1/0 ACSR
- Ret 1 35-5
- Ret 1 C1.11
- Ret 1 H1.1

- 106
- Ret 1240 1/0 ACSR
- Ret 1 35-5
- Ret 1 C1.11
- Ret 1 H1.1



23
Ext 1 F2.8
New 1140 4/0 ACSR
New 1 40-4
New 1 A5.3
New 1 C1.11P
New 1 E1.4
New 1 E3-10
New 1 H1.1
New 1 S1.01 15T FUSE
Ret 1140 1/0 ACSR
Ret 1 40-5
Ret 1 A5.3
Ret 1 C1.11
Ret 1 E1.1
Ret 1 E3-10
Ret 1 H1.1
Ret 1 S1.01

24
New 1448 4/0 ACSR
New 1 40-4
New 1 C1.11P
New 1 H1.1
Ret 1448 1/0 ACSR
Ret 1 40-5
Ret 1 C1.11
Ret 1 H1.1

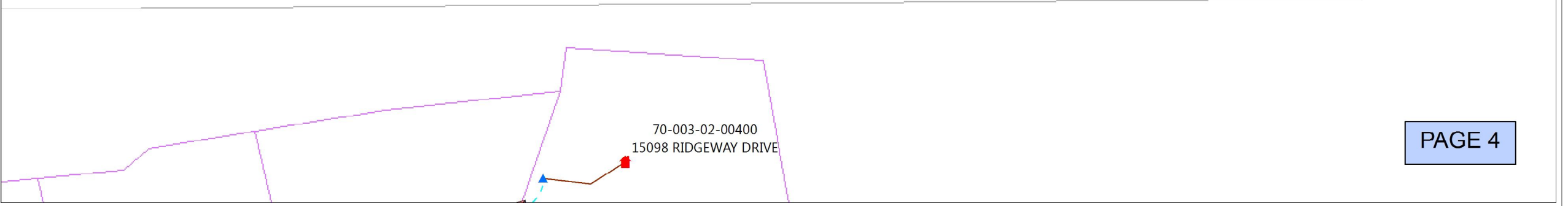
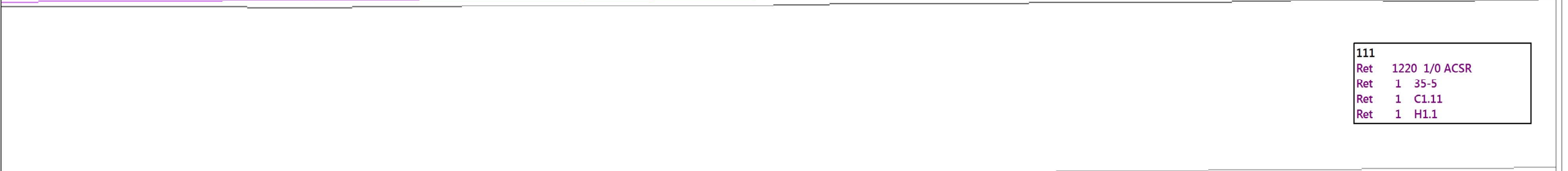
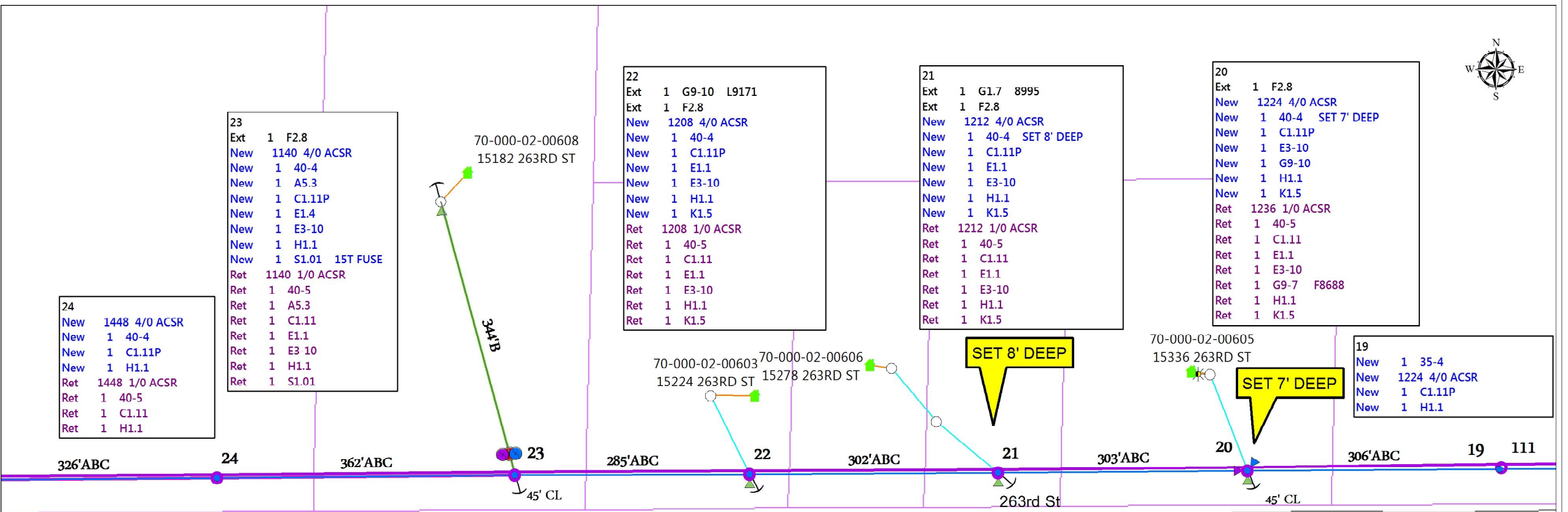
22
Ext 1 G9-10 L9171
Ext 1 F2.8
New 1208 4/0 ACSR
New 1 40-4
New 1 C1.11P
New 1 E1.1
New 1 E3-10
New 1 H1.1
New 1 K1.5
Ret 1208 1/0 ACSR
Ret 1 40-5
Ret 1 C1.11
Ret 1 E1.1
Ret 1 E3-10
Ret 1 H1.1
Ret 1 K1.5

21
Ext 1 G1.7 8995
Ext 1 F2.8
New 1212 4/0 ACSR
New 1 40-4 SET 8' DEEP
New 1 C1.11P
New 1 E1.1
New 1 E3-10
New 1 H1.1
New 1 K1.5
Ret 1212 1/0 ACSR
Ret 1 40-5
Ret 1 C1.11
Ret 1 E1.1
Ret 1 E3-10
Ret 1 H1.1
Ret 1 K1.5

20
Ext 1 F2.8
New 1224 4/0 ACSR
New 1 40-4 SET 7' DEEP
New 1 C1.11P
New 1 E3-10
New 1 G9-10
New 1 H1.1
New 1 K1.5
Ret 1236 1/0 ACSR
Ret 1 40-5
Ret 1 C1.11
Ret 1 E1.1
Ret 1 E3-10
Ret 1 G9-7 F8688
Ret 1 H1.1
Ret 1 K1.5

19
New 1 35-4
New 1224 4/0 ACSR
New 1 C1.11P
New 1 H1.1

111
Ret 1220 1/0 ACSR
Ret 1 35-5
Ret 1 C1.11
Ret 1 H1.1





29.1
Ext 1 35-5
Ext 1 E1.1
Ext 1 G1.6 S9603
Ext 1 H1.1
Ext 1 OWNER LOOP
Ext 1 E3-10
Ext 1 F2.8
New 726 4 ACSR
New 1 A5.1
Ret 726 6-8 ACWC
Ret 1 A5.1

70-000-02-00600
14824 263RD ST

29.1

29
New 1264 4/0 ACSR
New 1 40-4
New 1 A6.21
New 1 C1.11P
New 1 H1.1
New 1 S1.01 BØ NORTH 15T FUSE
New 1 S1.01 CØ SOUTH-15T FUSE
Ret 1264 1/0 ACSR
Ret 1 40-5
Ret 1 A1.11
Ret 1 C1.11
Ret 1 H1.1
Ret 1 S1.01

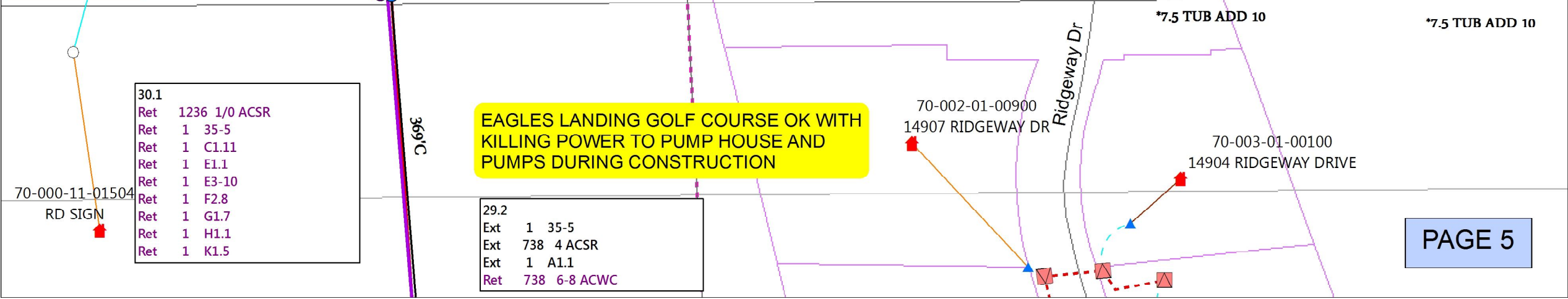
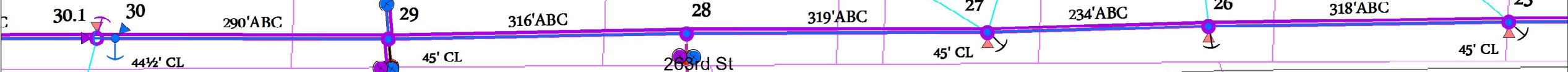
28
New 1276 4/0 ACSR
New 1 45-4
New 1 C1.11P
New 1 H1.1
New 1 UC7
Ret 1276 1/0 ACSR
Ret 1 45-5
Ret 1 C1.11
Ret 1 H1.1
Ret 1 UC7

27
Ext 1 G9-15 L9457
Ext 1 F2.8
New 936 4/0 ACSR
New 1 40-4
New 1 C1.11P
New 1 E1.1
New 1 E3-10
New 1 H1.1
New 2 K1.5
Ret 936 1/0 ACSR
Ret 1 40-5
Ret 1 C1.11
Ret 1 E1.1
Ret 1 E3-10
Ret 1 H1.1
Ret 2 K1.5

26
Ext 1 G9-7 B8544
Ext 1 F2.8
New 1272 4/0 ACSR
New 1 40-4
New 1 C1.11P
New 1 E1.1
New 1 E3-10
New 1 H1.1
New 1 K1.5
Ret 1272 1/0 ACSR
Ret 1 40-5
Ret 1 C1.11
Ret 1 E1.1
Ret 1 E3-10
Ret 1 H1.1
Ret 1 K1.5

25
Ext 1 G9-7 E8883
Ext 1 F1.8
New 1304 4/0 ACSR
New 1 40-4
New 1 C1.11P
New 1 E1.1
New 1 E3-10
New 1 H1.1
New 1 K1.5
Ret 1304 1/0 ACSR
Ret 1 40-5
Ret 1 C1.11
Ret 1 E1.1
Ret 1 E3-10
Ret 1 H1.1
Ret 1 K1.5

30
New 1160 4/0 ACSR
New 1 40-4
New 1 C6.31L
New 1 E1.1
New 4 E1.3L
New 4 F2.10
New 1 G1.7
New 1 H1.1
New 1 K1.5



EAGLES LANDING GOLF COURSE OK WITH KILLING POWER TO PUMP HOUSE AND PUMPS DURING CONSTRUCTION

30.1
Ret 1236 1/0 ACSR
Ret 1 35-5
Ret 1 C1.11
Ret 1 E1.1
Ret 1 E3-10
Ret 1 F2.8
Ret 1 G1.7
Ret 1 H1.1
Ret 1 K1.5

29.2
Ext 1 35-5
Ext 738 4 ACSR
Ext 1 A1.1
Ret 738 6-8 ACWC



TO 70-000-02-00700
#26681 HIGHWAY 371

35
Ext 1252 4 ACSR
Ext 1 40-5
Ext 1 S3.1
Ext 1 UC7
Ext 1 C5.21
Ext 2 E1.1
Ext 2 E3-10
Ext 1 F1.8
Ext 1 F2.8
Ext 1 H1.1
Ext 1 L1.5
New 626 4 ACSR
New 2 L2.5
New 1 N5.1
Ret 626 6-8 ACWC
Ret 1 N1.1

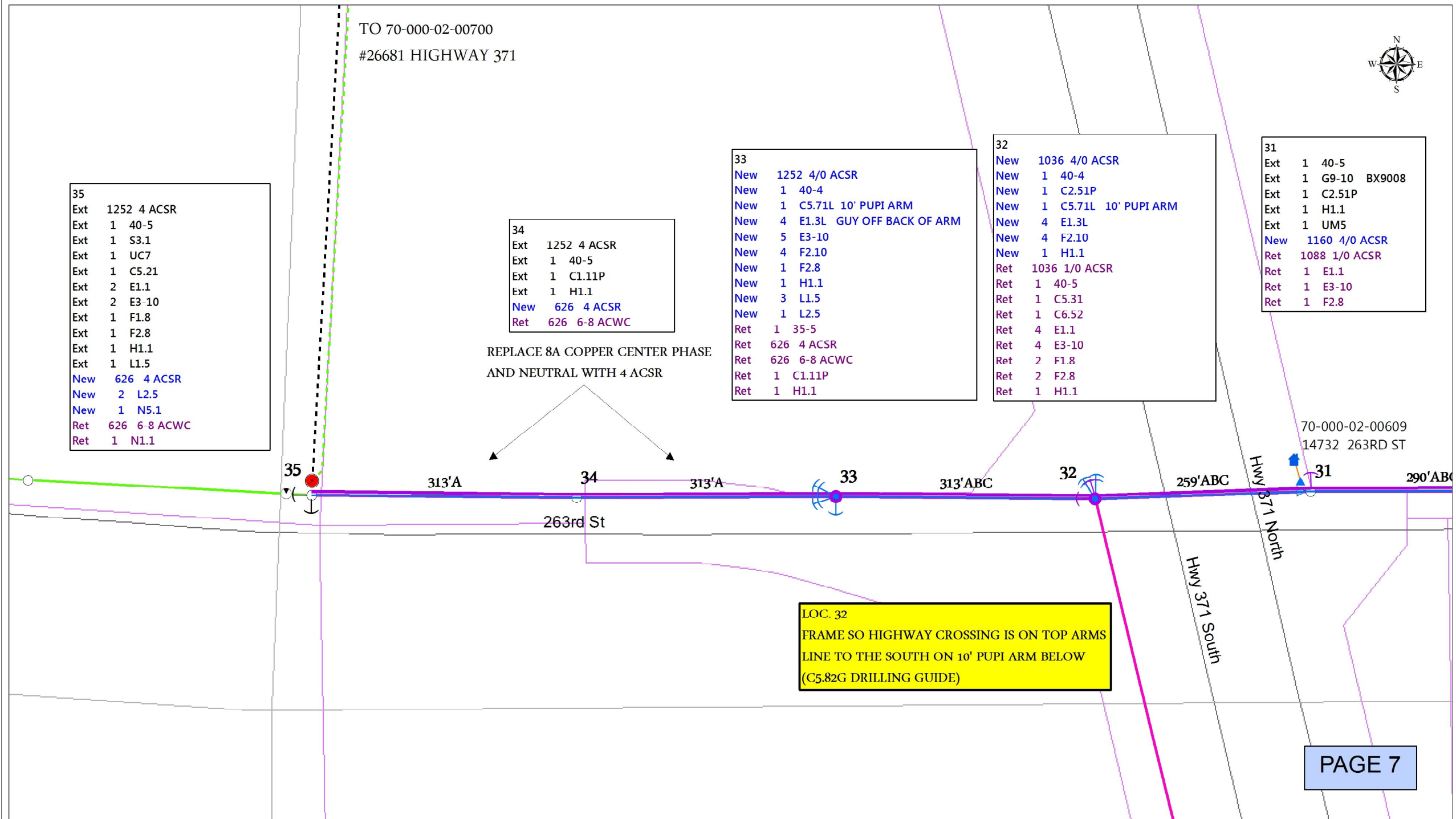
34
Ext 1252 4 ACSR
Ext 1 40-5
Ext 1 C1.11P
Ext 1 H1.1
New 626 4 ACSR
Ret 626 6-8 ACWC

REPLACE 8A COPPER CENTER PHASE
AND NEUTRAL WITH 4 ACSR

33
New 1252 4/0 ACSR
New 1 40-4
New 1 C5.71L 10' PUPI ARM
New 4 E1.3L GUY OFF BACK OF ARM
New 5 E3-10
New 4 F2.10
New 1 F2.8
New 1 H1.1
New 3 L1.5
New 1 L2.5
Ret 1 35-5
Ret 626 4 ACSR
Ret 626 6-8 ACWC
Ret 1 C1.11P
Ret 1 H1.1

32
New 1036 4/0 ACSR
New 1 40-4
New 1 C2.51P
New 1 C5.71L 10' PUPI ARM
New 4 E1.3L
New 4 F2.10
New 1 H1.1
Ret 1036 1/0 ACSR
Ret 1 40-5
Ret 1 C5.31
Ret 1 C6.52
Ret 4 E1.1
Ret 4 E3-10
Ret 2 F1.8
Ret 2 F2.8
Ret 1 H1.1

31
Ext 1 40-5
Ext 1 G9-10 BX9008
Ext 1 C2.51P
Ext 1 H1.1
Ext 1 UM5
New 1160 4/0 ACSR
Ret 1088 1/0 ACSR
Ret 1 E1.1
Ret 1 E3-10
Ret 1 F2.8



LOC. 32
FRAME SO HIGHWAY CROSSING IS ON TOP ARMS
LINE TO THE SOUTH ON 10' PUPI ARM BELOW
(C5.82G DRILLING GUIDE)

70-000-02-00609
14732 263RD ST