



106
 New 1120 4/0 ACSR
 New 1 40-4 SET 7' DEEP
 New 1 C1.11P
 New 1 H1.1

SET 7' DEEP

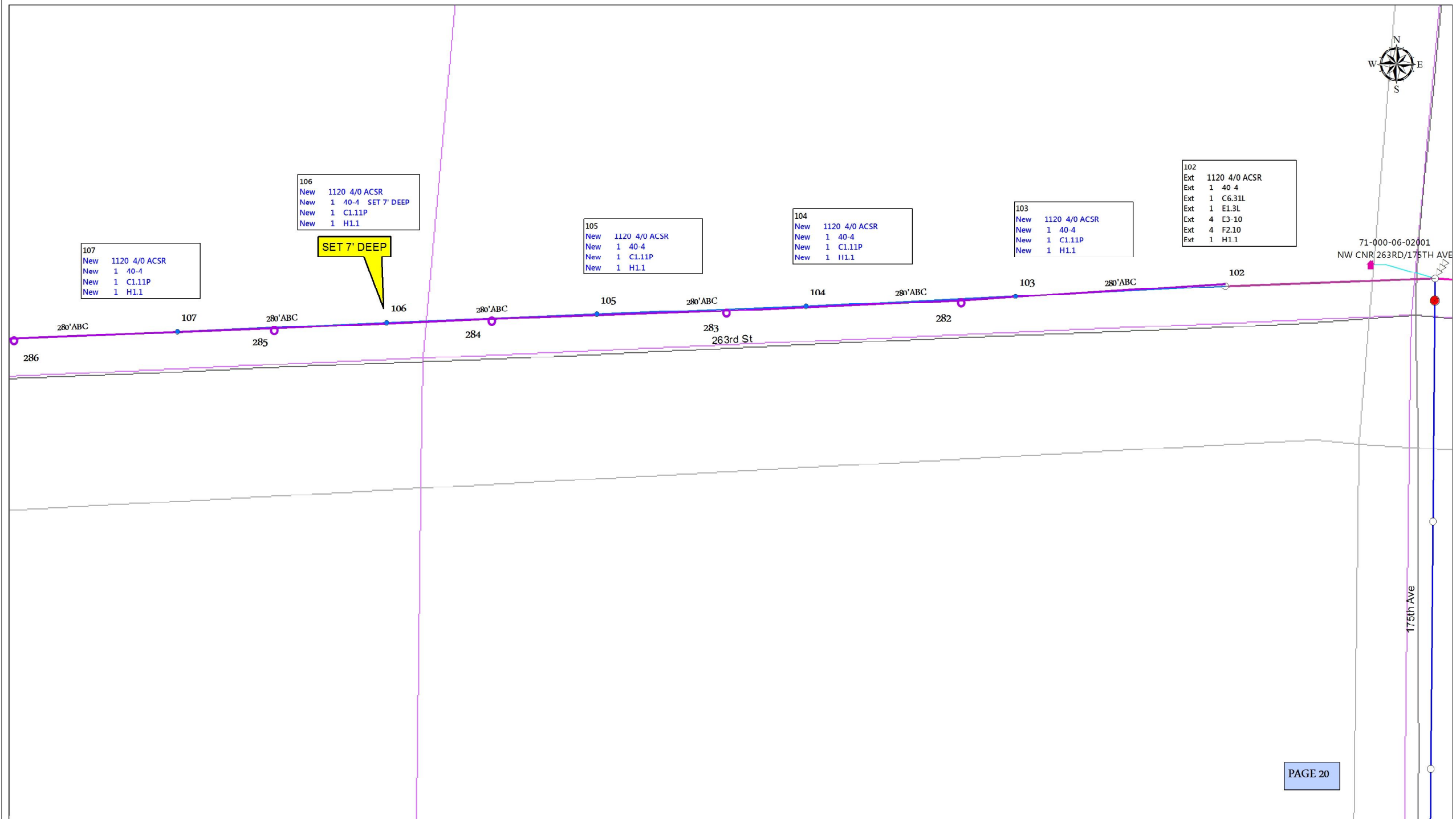
105
 New 1120 4/0 ACSR
 New 1 40-4
 New 1 C1.11P
 New 1 H1.1

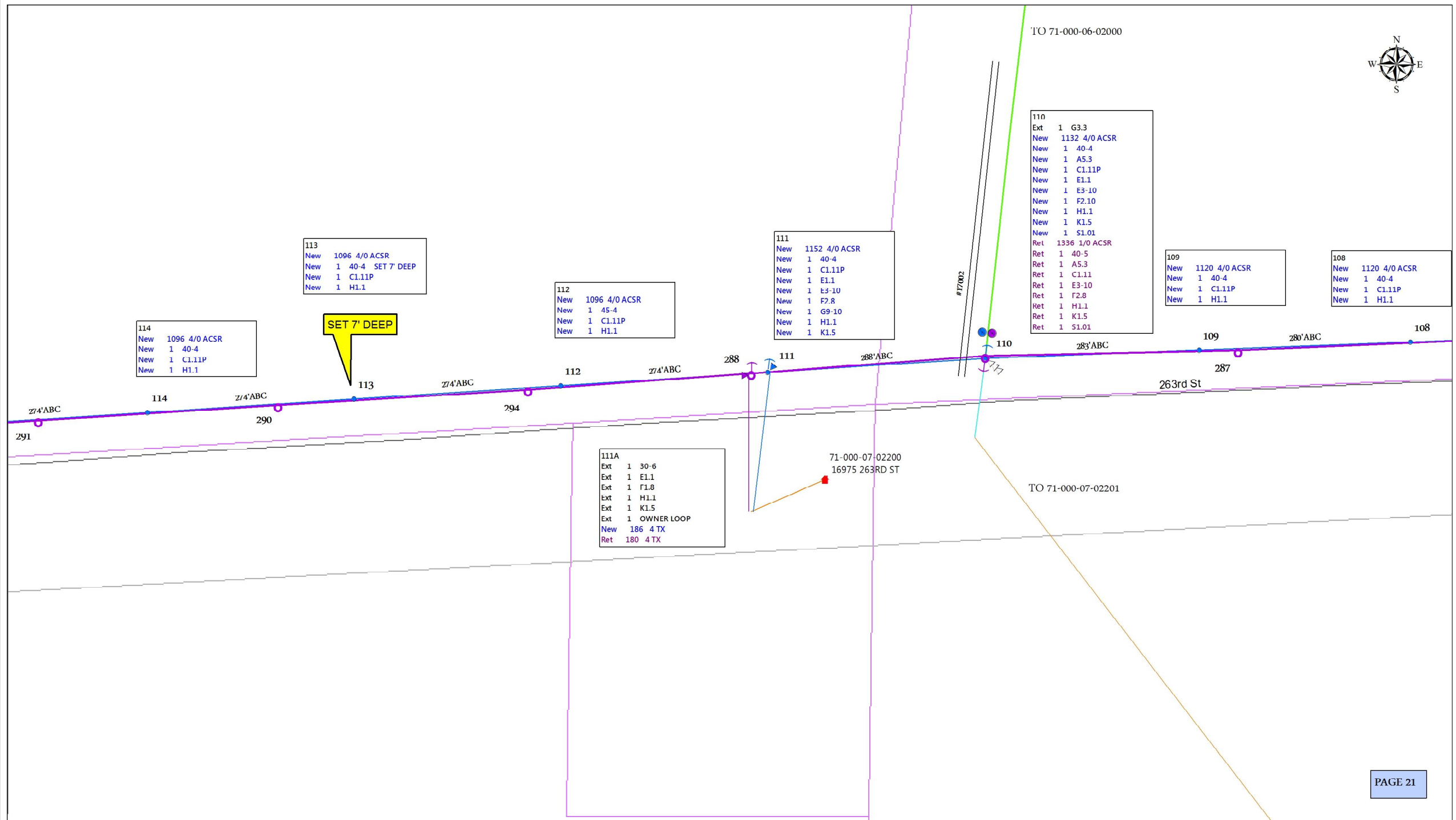
104
 New 1120 4/0 ACSR
 New 1 40-4
 New 1 C1.11P
 New 1 H1.1

103
 New 1120 4/0 ACSR
 New 1 40-4
 New 1 C1.11P
 New 1 H1.1

102
 Ext 1120 4/0 ACSR
 Ext 1 40-4
 Ext 1 C6.31L
 Ext 1 E1.3L
 Ext 4 C3-10
 Ext 4 F2.10
 Ext 1 H1.1

107
 New 1120 4/0 ACSR
 New 1 40-4
 New 1 C1.11P
 New 1 H1.1





114
New 1096 4/0 ACSR
New 1 40-4
New 1 C1.11P
New 1 H1.1

113
New 1096 4/0 ACSR
New 1 40-4 SET 7' DEEP
New 1 C1.11P
New 1 H1.1

112
New 1096 4/0 ACSR
New 1 45-4
New 1 C1.11P
New 1 H1.1

111
New 1152 4/0 ACSR
New 1 40-4
New 1 C1.11P
New 1 E1.1
New 1 E3-10
New 1 F2.8
New 1 G9-10
New 1 H1.1
New 1 K1.5

110
Ext 1 G3.3
New 1132 4/0 ACSR
New 1 40-4
New 1 A5.3
New 1 C1.11P
New 1 E1.1
New 1 E3-10
New 1 F2.10
New 1 H1.1
New 1 K1.5
New 1 S1.01
Ret 1336 1/0 ACSR
Ret 1 40-5
Ret 1 A5.3
Ret 1 C1.11
Ret 1 E3-10
Ret 1 F2.8
Ret 1 H1.1
Ret 1 K1.5
Ret 1 S1.01

109
New 1120 4/0 ACSR
New 1 40-4
New 1 C1.11P
New 1 H1.1

108
New 1120 4/0 ACSR
New 1 40-4
New 1 C1.11P
New 1 H1.1

111A
Ext 1 30-6
Ext 1 E1.1
Ext 1 F1.8
Ext 1 H1.1
Ext 1 K1.5
Ext 1 OWNER LOOP
New 186 4 TX
Ret 180 4 TX



121
New 1160 4/0 ACSR
New 1 40-4 SET 8' DEEP
New 1 C6.31L
New 4 E1.3L
New 4 E3 10
New 4 F2.10
New 1 H1.1
Ret 1160 1/0 ACSR
Ret 1 35-5
Ret 1 C1.11
Ret 1 H1.1

SET 8' DEEP

70-000-01-00306
IRRGTR SECT 1 NW CRNR

120
Ext 1 G3.3
Ext 1 OWNER LOOP
New 1160 4/0 ACSR
New 1 40-4
New 1 C2.24P
New 1 H1.1
Ret 1160 1/0 ACSR
Ret 1 40-5
Ret 1 C2.24
Ret 1 H1.1

119
New 1260 4/0 ACSR
New 1 40-4
New 1 C2.24P
New 1 C6.52
New 1 H1.1
Ret 1452 1/0 ACSR
Ret 1 40-5
Ret 1 A6.1
Ret 1 C2.24
Ret 2 E1.1
Ret 2 E1.5
Ret 1 H1.1

118
New 1260 4/0 ACSR
New 1 50-3
New 1 C1.11P
New 1 H1.1

117
Ext 1 OWNER LOOP
New 1096 4/0 ACSR
New 1 40-4
New 1 C1.11P
New 1 G3.3
New 1 H1.1

SPLICE CONS. OWNED 3Ø 4/0 U.S.E.

116
New 1096 4/0 ACSR
New 1 40-4
New 1 C1.11P
New 1 H1.1

115
New 1096 4/0 ACSR
New 1 40-5
New 1 C1.11P
New 1 H1.1

SET 7½' DEEP

THE REST OF THE 3Ø LINE TO THE WEST CROSSING HWY 371 WILL BE BUILT UNDER WORK ORDER #428805

71-000-07-02301
CO RD 49 W SAI