
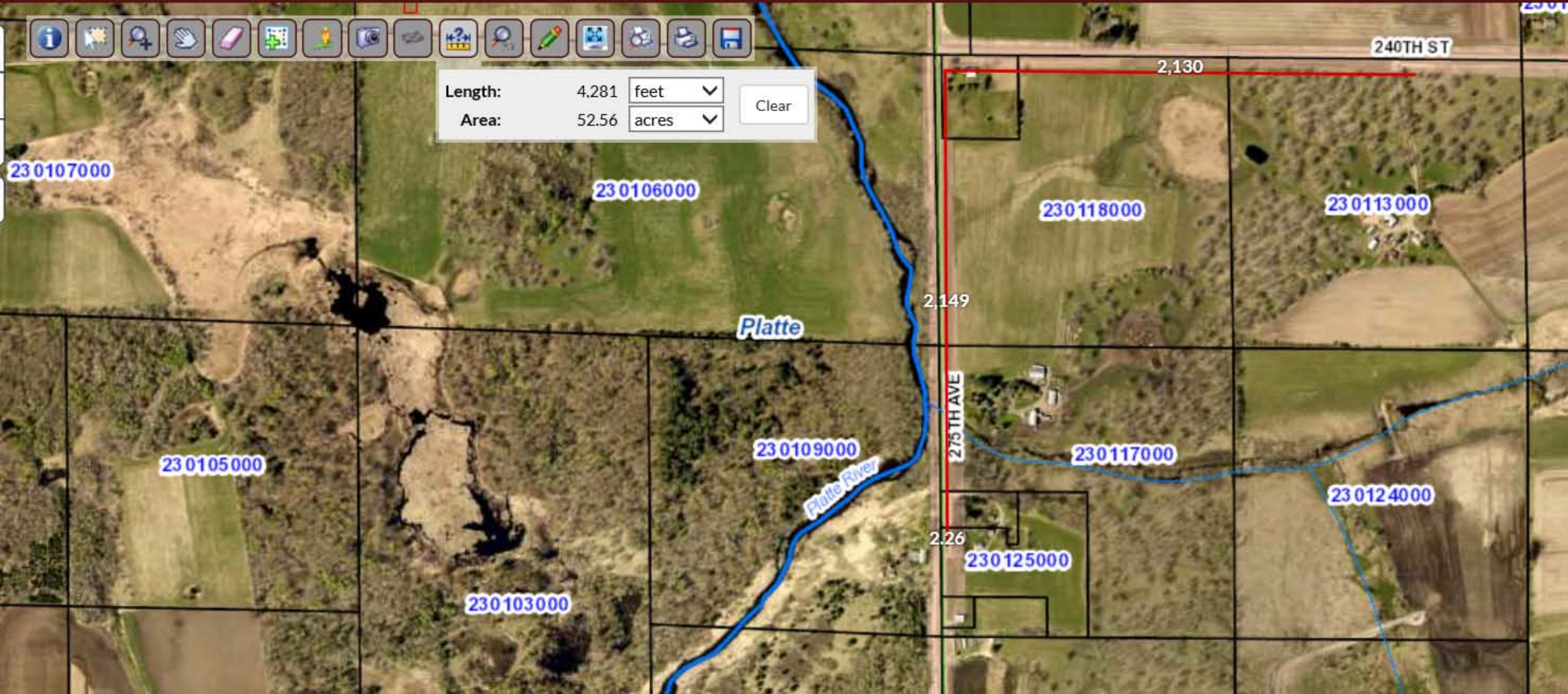
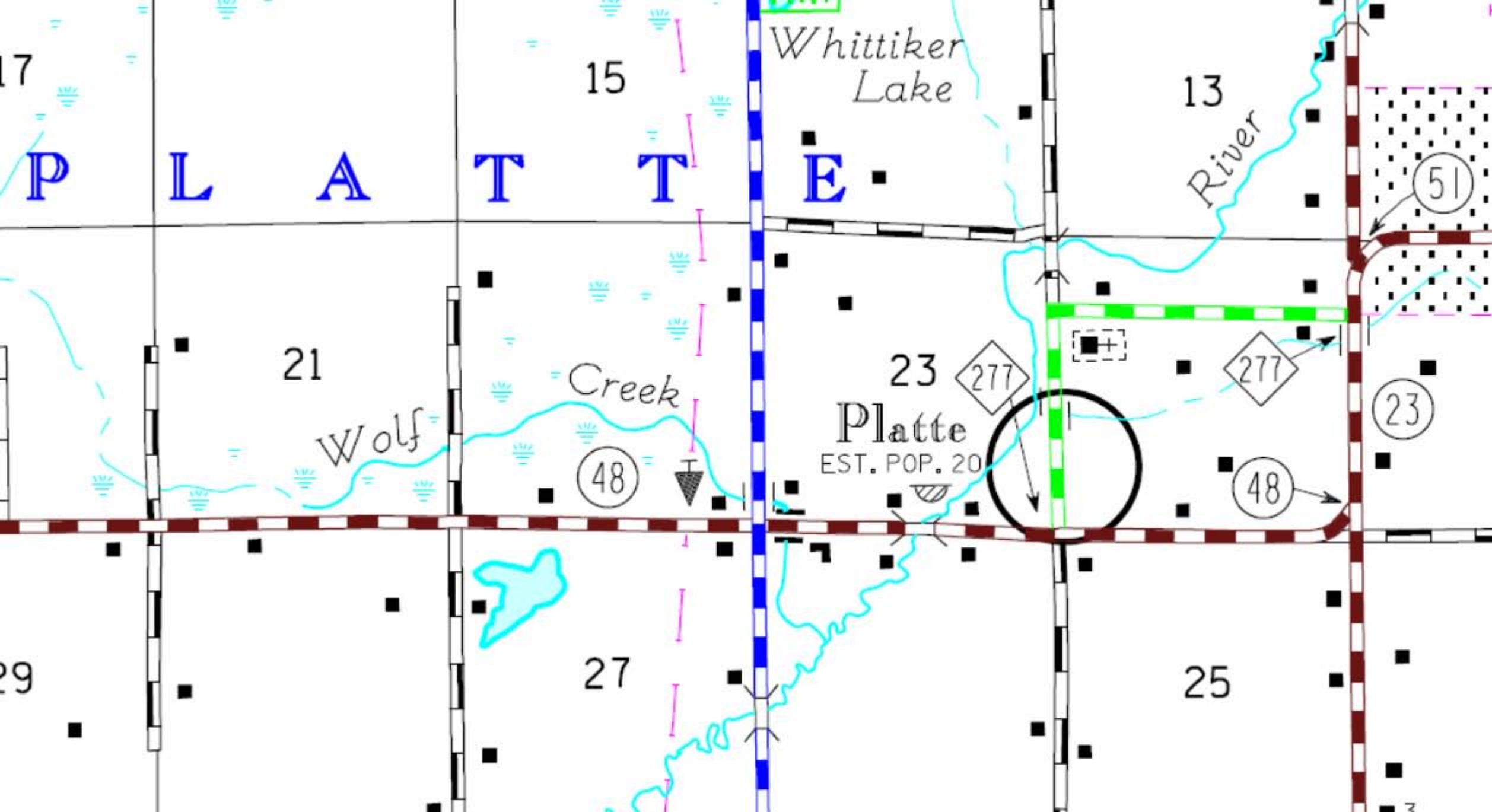


Comp Search 



Length: 4,281 feet
Area: 52.56 acres





0+00 CL
275th Ave

1+96 Driveway
2+72 New CTC Ped
2+78 Pwr Pole

5+66 Pwr Pole

6+80 Driveway

27676

8+82 New CTC Ped
8+88 Pwr Pole

12+06 Pwr Pole

15+34 Pwr Pole

18+60 Pwr Pole

20+64 Driveway CL
20+64 existing CTC Ped

Bore trees @ 36"

County Rd 277 / 240th st

277

240th St

BFO24 Fiber cable run Line @ 46' - 50' from centerline

New Ped & Pole @ 50'

Pole @ 50'

New Ped & Pole @ 50'

Pole @ 50'

R/W @ 50'

Pole @ 50'

Ped @ 50'

23852
24032

Drawing page 1 of 2

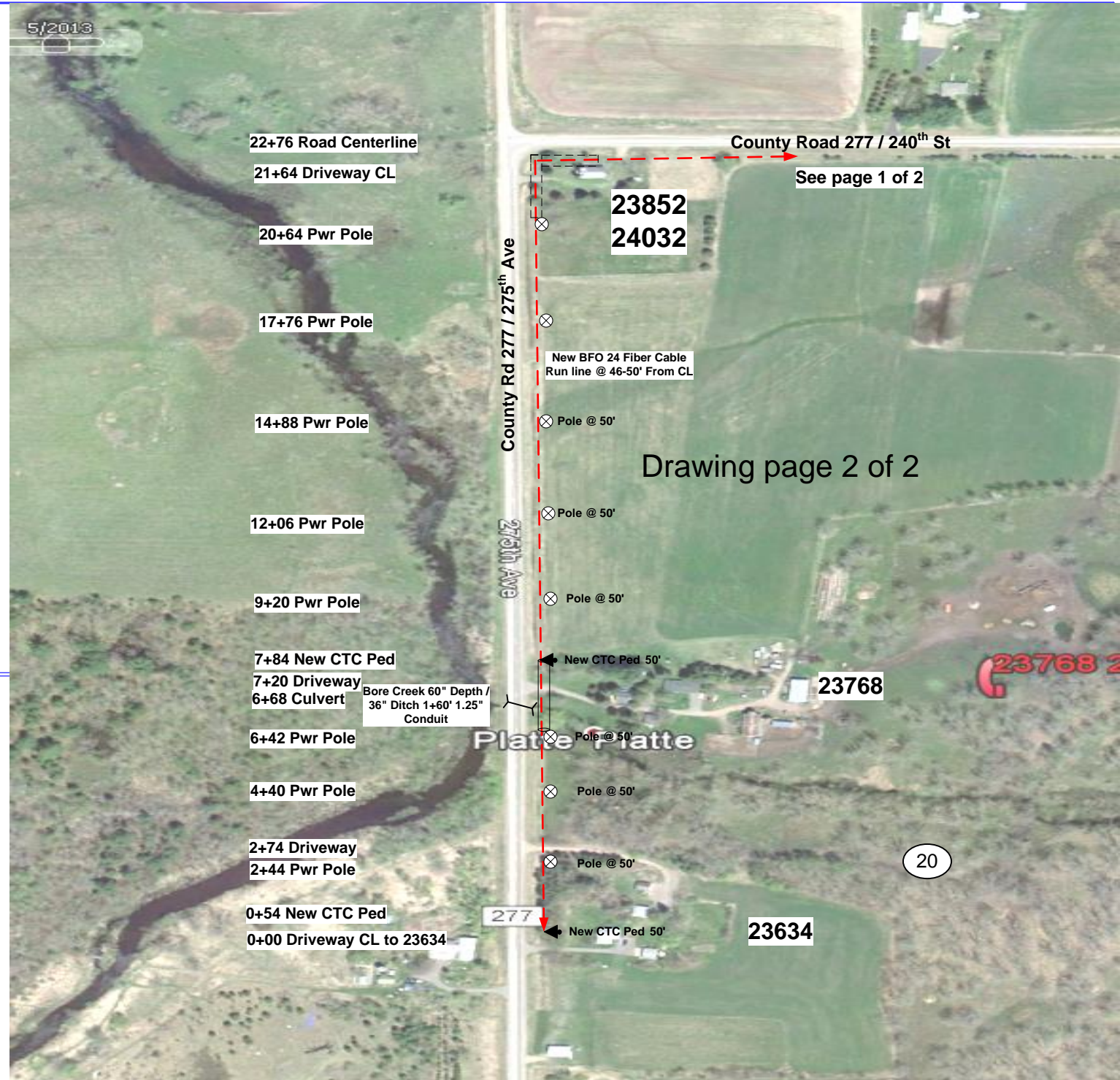
See Page 2 of 2

20

Morrison County
Platt Twsp
42N, 30W, S-20

27895

Morrison County
 Platt Twsp
 42N, 30W, S-20



Drawing page 2 of 2